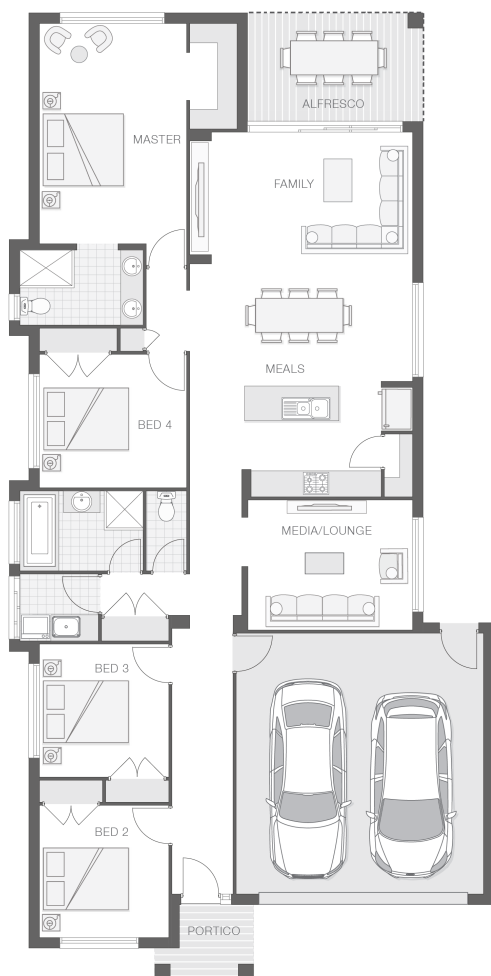


# The Keppel

4 2 2 22 sq

Facade name: Byron

## House Plan:



**LOT #529**

**Seacrest Estate**

**Address: Somervale Road, Sandy Beach, 2456**



**593 m<sup>2</sup>**

House and land package price:

**Fixed \$532,450\***

## About package:

The Keppel home design is modern and meticulous with attention to detail at every turn. The design essentially separates the home into individual zones to provide privacy and tranquility while also accommodating entertainment and family living. The hub of this home is the chefs style kitchen with walk-in-pantry and living space that is fringed by the alfresco at one end and media or family room at the other. The bedrooms are spread across the opposing side of the house creating great separation and easy flow throughout the home.

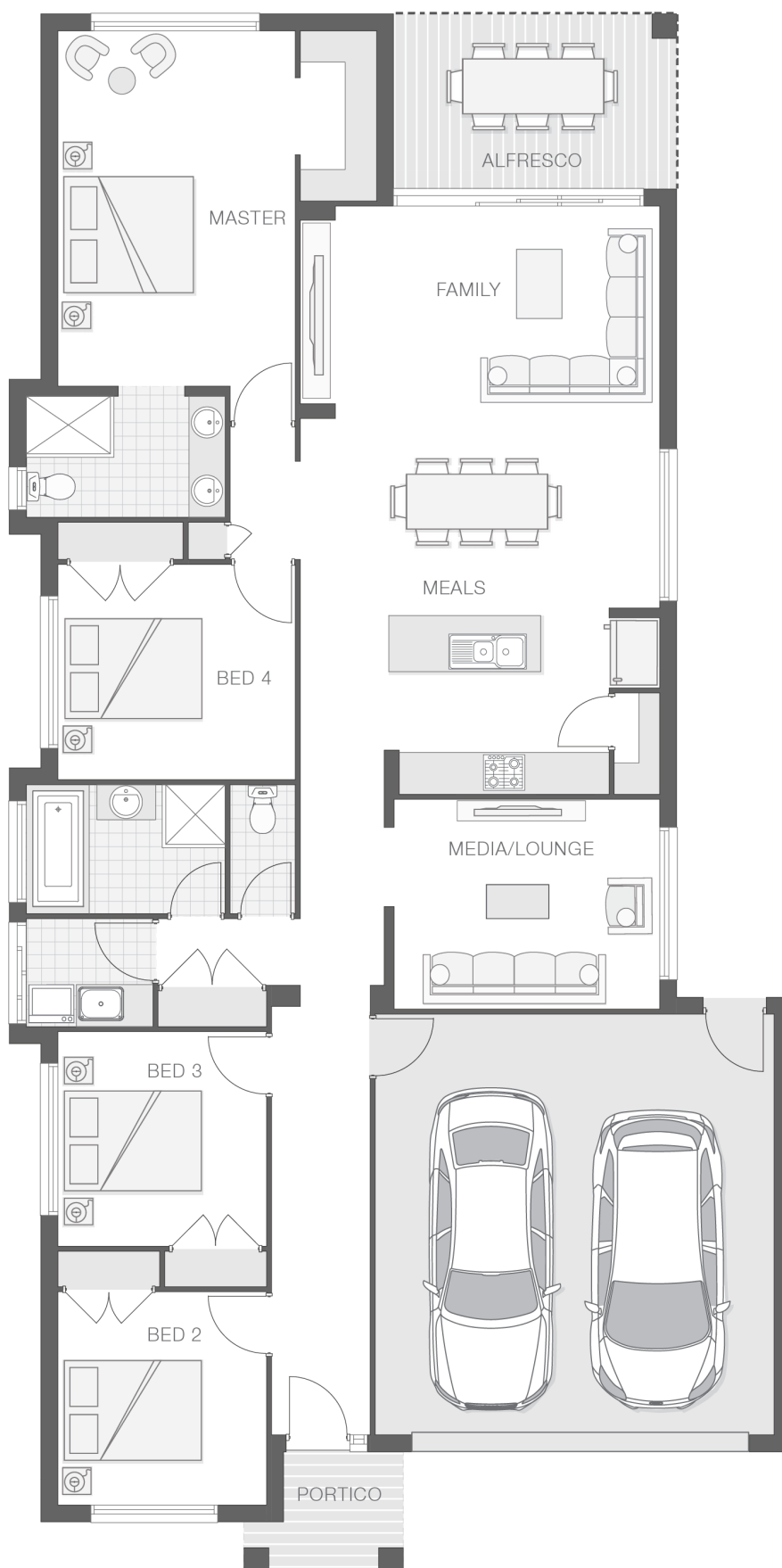
## ENQUIRE NOW:

Niki Whelan • P: 0412 797 925 • E: [coffs.display@adenbrook.com.au](mailto:coffs.display@adenbrook.com.au)

Plans and designs depicted may change with facade selection. All drawings and photographs are for illustrative purposes only. This work is exclusively owned by AB Aust. IP Pty Ltd (ACN 163 575 077) and cannot be reproduced or copied wholly or in part, in any form without permission of AB Aust. IP Pty Ltd. Any prices in this document include GST, are subject to change without notice, relate only to the base house price and standard inclusions. Site costs will vary depending on site conditions, local Council requirements, estate guidelines and any other statutory requirements applicable. Adenbrook Homes does not have a hold on the block, this package is subject to land availability and you securing the land through the land agent directly. For more information please speak to one of our friendly New Home Consultants.

### House Features:

- ✓ 20mm stone benchtops to kitchen
- ✓ 900mm Cooker and Dishwasher
- ✓ Carpet and Tile or Vinyl floors; modern architraves 67mm x 18mm
- ✓ Overhead cupboards to kitchen, 4 shelves to Pantry and Linen
- ✓ Wideline aluminium windows, stacker and sliding doors, and flyscreens
- ✓ Three (3) coat Haymes low toxic internal paint system
- ✓ Double lock-up garage with remotes, mailbox, and clothesline
- ✓ LED downlights throughout and NBN provision
- ✓ Obscure glazing to bathroom, ensuite and WC
- ✓ 3000L rainwater tank with submersible pump
- ✓ M class soil and 500mm fall over building platform
- ✓ Services connections, skip bins, site fencing, toilet, and rubbish removal
- ✓ Brick exterior, concrete tile roof, 45sqm grey concrete driveway
- ✓ 27L gas instantaneous hot water system



### ENQUIRE NOW:

Niki Whelan • P: 0412 797 925 • E: [coffs.display@adenbrook.com.au](mailto:coffs.display@adenbrook.com.au)

Plans and designs depicted may change with facade selection. All drawings and photographs are for illustrative purposes only. This work is exclusively owned by AB Aust. IP Pty Ltd (ACN 163 575 077) and cannot be reproduced or copied wholly or in part, in any form without permission of AB Aust. IP Pty Ltd. Any prices in this document include GST, are subject to change without notice, relate only to the base house price and standard inclusions. Site costs will vary depending on site conditions, local Council requirements, estate guidelines and any other statutory requirements applicable. Adenbrook Homes does not have a hold on the block, this package is subject to land availability and you securing the land through the land agent directly. For more information please speak to one of our friendly New Home Consultants.