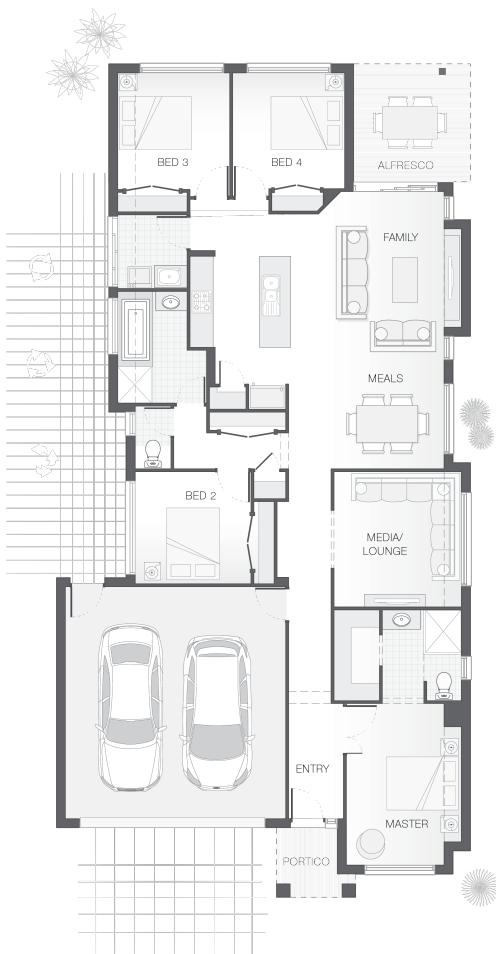




House Plan:



LOT #1591

Gainsborough Greens

Address: Stirling Circuit, Pimpama, 4209



400 m<sup>2</sup>

The Saxon - Gold Coast

Package Price From

4

2

2

197 m<sup>2</sup>

**\$473,824\***

About package:

The Saxon home design achieves the perfect balance between compact living and functionality. The clever design incorporates a central hub for entertaining both indoors and out with the tidy alfresco area adjoining the kitchen, family room and meals zones. A touch of luxury is added through the separate media or lounge room while all bedrooms are well-appointed to allow separation and privacy. The master retreat includes an ensuite and walk-in-robe to round out a convenient and punchy design.

ENQUIRE NOW:

Nick Ghezzi • P: 0434 116 508 • E: [nick.ghezzi@adenbrook.com.au](mailto:nick.ghezzi@adenbrook.com.au)

Images depicted on this site are for illustration purposes only. Facades and other images of homes and land estates may include optional upgrades, additional fixtures, finishes and home or estate features that are not included in the base price of the home or land package such as landscaping, feature tiling, decking, furnishing, feature lighting, pools, etc. Land estate pricing and plans are subject to developer guidelines and may vary at any time.

Powered by iBuildNew