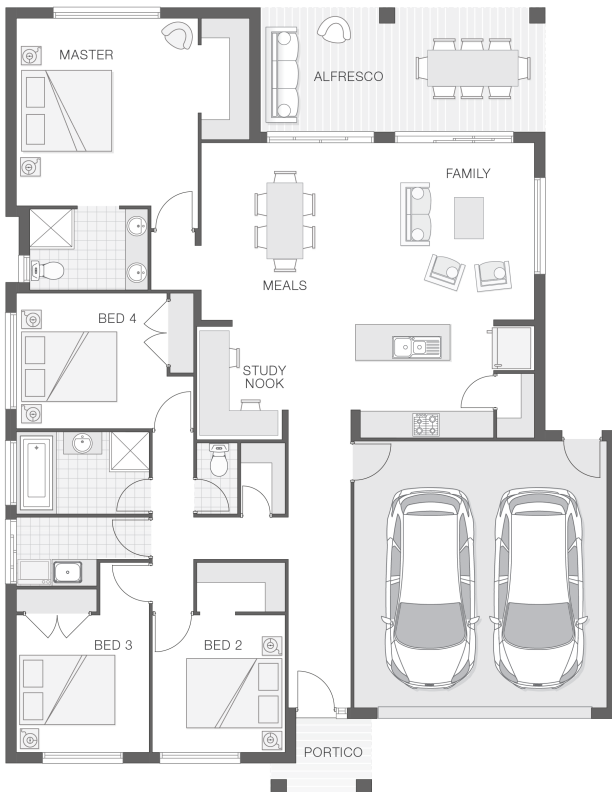


The Chelsea

4 2 2 23 sq

Facade name: Byron

House Plan:



LOT #618

Lake Heights Estate

Address: Lake Heights Estate, North Boambee Valley,
2450



474 m²

House and land package price:

From **\$567,100***

About package:

The Chelsea home design is modern, practical and versatile. A real family home, the Chelsea features a central living zone with kitchen, meals and family room overlooking alfresco area with a convenient study nook, making homework a breeze. The master retreat is complete with ensuite and walk-in-robe and is privately tucked away at the rear of the home. The additional bedrooms are all generous in size and are separate from the main living zones offering good separation and privacy.

This house and land package is designed to give you a price guide for a particular style of home on a block of land, and is subject to soil and contour tests. We can assist you with an alternative Adenbrook design and block, then customize a package to suit your individual needs and budget.

To view this and our complete range of designs please visit our website:
<http://www.adenbrookhomes.com.au/homes>

Contact our New Home Consultant Niki Whelan on 0412 797 925 at Adenbrook Homes today to further customize this package to suit your needs or for more information about realizing the dream of owning your very own new home. For more details visit our display home OPEN 7 DAYS, 10am to 4pm at: 13 Zenith Avenue, Sandy Beach (02) 6653 6942.

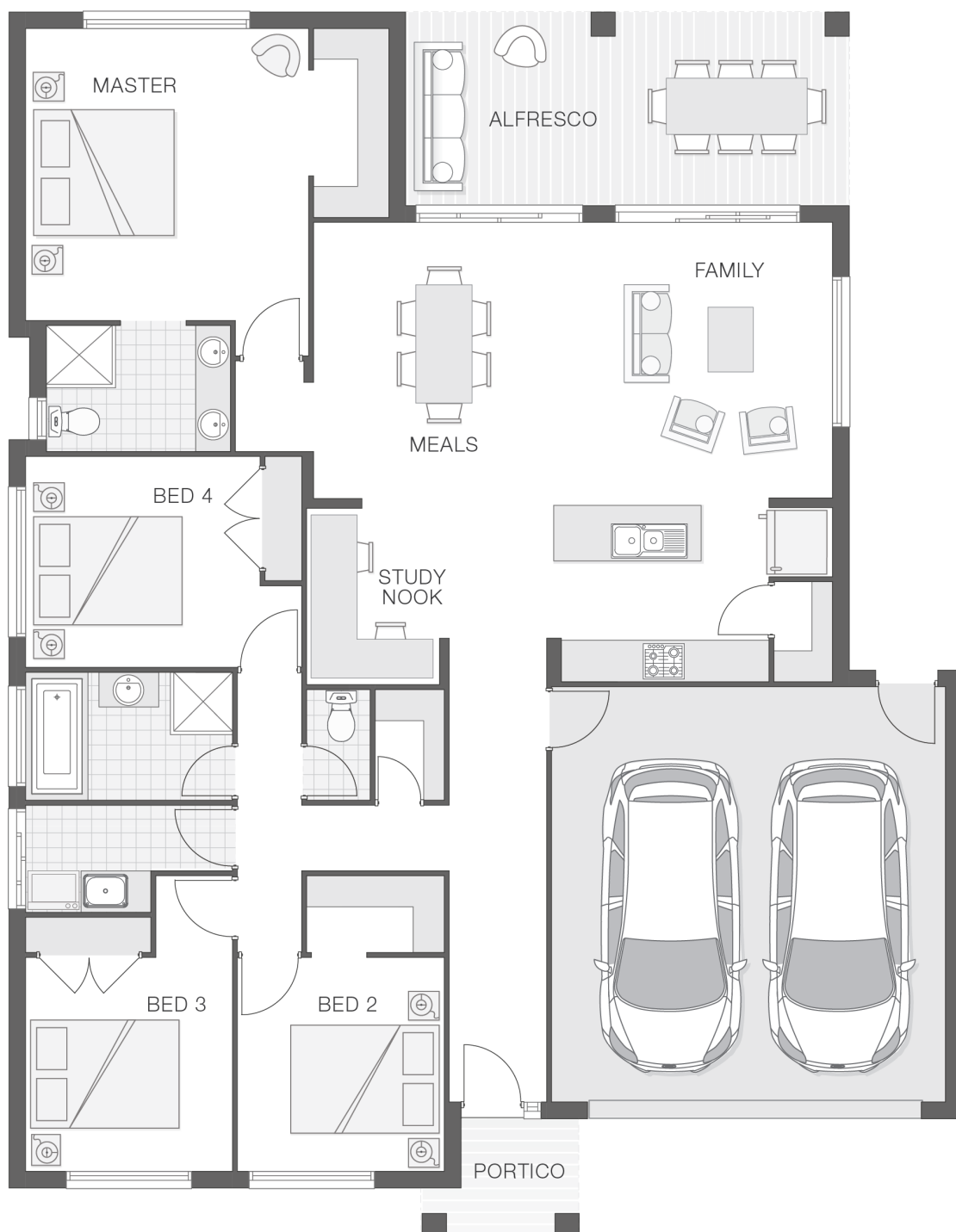
ENQUIRE NOW:

Niki Whelan • P: 0412 797 925 • E: coffs.display@adenbrook.com.au

Plans and designs depicted may change with facade selection. All drawings and photographs are for illustrative purposes only. This work is exclusively owned by AB Aust. IP Pty Ltd (ACN 163 575 077) and cannot be reproduced or copied wholly or in part, in any form without permission of AB Aust. IP Pty Ltd. Any prices in this document include GST, are subject to change without notice, relate only to the base house price and standard inclusions. Site costs will vary depending on site conditions, local Council requirements, estate guidelines and any other statutory requirements applicable. Adenbrook Homes does not have a hold on the block, this package is subject to land availability and you securing the land through the land agent directly. For more information please speak to one of our friendly New Home Consultants.

House Features:

- ✓ 20mm stone benchtops to kitchen
- ✓ Overhead cupboards to kitchen, 4 shelves to Pantry and Linen
- ✓ LED downlights throughout and NBN provision
- ✓ M class soil and 500mm fall over building platform
- ✓ 3000L rainwater tank with submersible pump
- ✓ Double lock-up garage with remotes, mailbox, and clothesline
- ✓ Wideline aluminium windows, stacker and sliding doors, and flyscreens
- ✓ 900mm Cooker and Dishwasher
- ✓ Carpet and Tile or Vinyl floors; modern architraves 67mm x 18mm
- ✓ Three (3) coat Haymes low toxic internal paint system
- ✓ Obscure glazing to bathroom, ensuite and WC
- ✓ Guaranteed build time, fixed price and no hidden costs
- ✓ 3 included facade options and complimentary window changes
- ✓ Termite resistant "blue pine" framing and trusses and physical termite barriers
- ✓ Services connections, skip bins, site fencing, toilet, and rubbish removal
- ✓ 27L gas instantaneous hot water system
- ✓ Brick exterior, concrete tile roof, 45sqm grey concrete driveway
- ✓ Extended polished edge mirrors full wall width



ENQUIRE NOW:

Niki Whelan • P: 0412 797 925 • E: coffs.display@adenbrook.com.au

Plans and designs depicted may change with facade selection. All drawings and photographs are for illustrative purposes only. This work is exclusively owned by AB Aust. IP Pty Ltd (ACN 163 575 077) and cannot be reproduced or copied wholly or in part, in any form without permission of AB Aust. IP Pty Ltd. Any prices in this document include GST, are subject to change without notice, relate only to the base house price and standard inclusions. Site costs will vary depending on site conditions, local Council requirements, estate guidelines and any other statutory requirements applicable. Adenbrook Homes does not have a hold on the block, this package is subject to land availability and you securing the land through the land agent directly. For more information please speak to one of our friendly New Home Consultants.