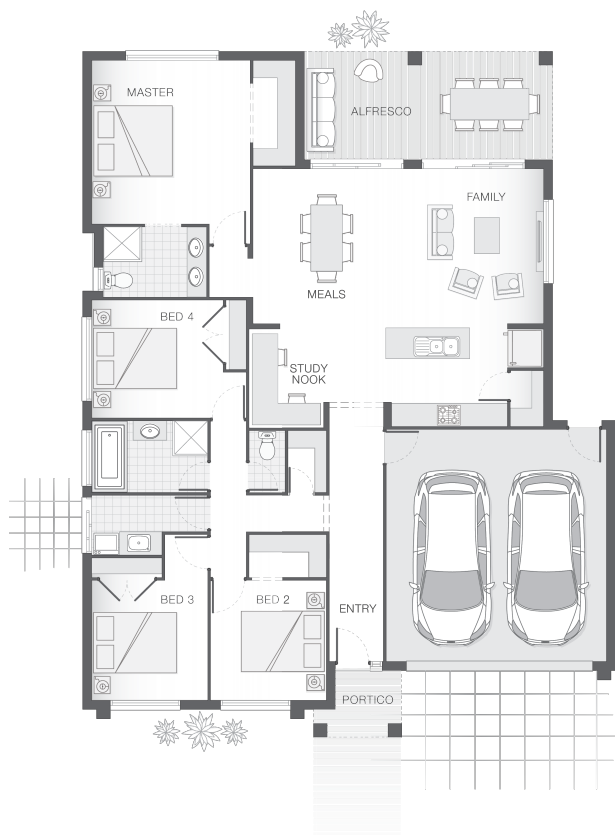




House Plan:



LOT #710

Brookhaven

Address: Menora Road, Bahrs Scrub, 4207



458 m²

The Chelsea - Gold Coast

Package Price From

4

2

2

214 m²

\$457,554*

About package:

The Chelsea home design is modern, practical and versatile. A real family home, the Chelsea features a central living zone with kitchen, meals and family room overlooking alfresco area with a convenient study nook, making homework a breeze. The master retreat is complete with ensuite and walk-in-robe and is privately tucked away at the rear of the home. The additional bedrooms are all generous in size and are separate from the main living zones offering good separation and privacy.

ENQUIRE NOW:

Nick Ghezzi • P: 0434 116 508 • E: nick.ghezzi@adenbrook.com.au

Images depicted on this site are for illustration purposes only. Facades and other images of homes and land estates may include optional upgrades, additional fixtures, finishes and home or estate features that are not included in the base price of the home or land package such as landscaping, feature tiling, decking, furnishing, feature lighting, pools, etc. Land estate pricing and plans are subject to developer guidelines and may vary at any time.

Powered by  **iBuildNew**

adenbrook
homes

REF: IADEQHL479351