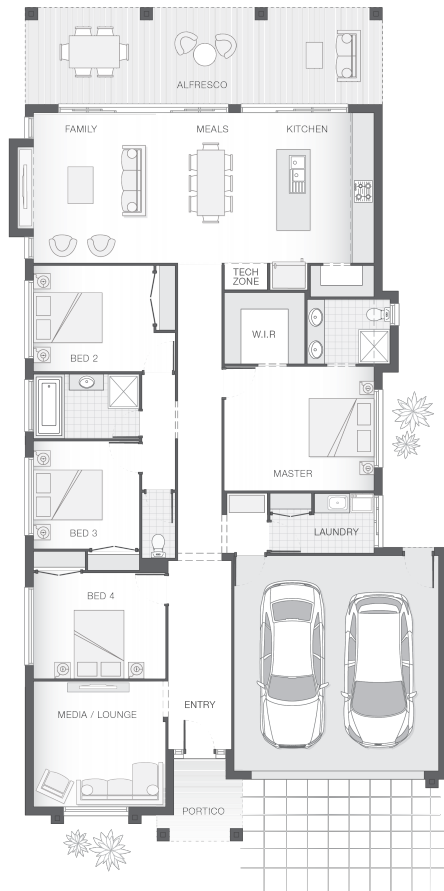




House Plan:



LOT #148

Element - Pallara

Address: Whitehaven Street, Pallara, 4110



508 m<sup>2</sup>

The Isla - B

Package Price From

4

2

2

25 sq

**\$628,313\***

About package:

The Isla home design is sophisticated and stylish, offering all the modern features that you need to relax, entertain and enjoy! The outdoor entertaining area runs the width of the home and flawlessly integrates with the family room, meals area and generous kitchen complete with butler's pantry creating an oversized entertainers delight. The master retreat with ensuite and walk-in-robe boasts great separation while the central living zone is dedicated to additional bedrooms and the media room.

ENQUIRE NOW:

Brendan Wekeem • P: 0400 901 485 • E: [Brendan.wekeem@adenbrook.com.au](mailto:Brendan.wekeem@adenbrook.com.au)

Images depicted on this site are for illustration purposes only. Facades and other images of homes and land estates may include optional upgrades, additional fixtures, finishes and home or estate features that are not included in the base price of the home or land package such as landscaping, feature tiling, decking, furnishing, feature lighting, pools, etc. Land estate pricing and plans are subject to developer guidelines and may vary at any time.

Powered by iBuildNew

adenbrook  
homes

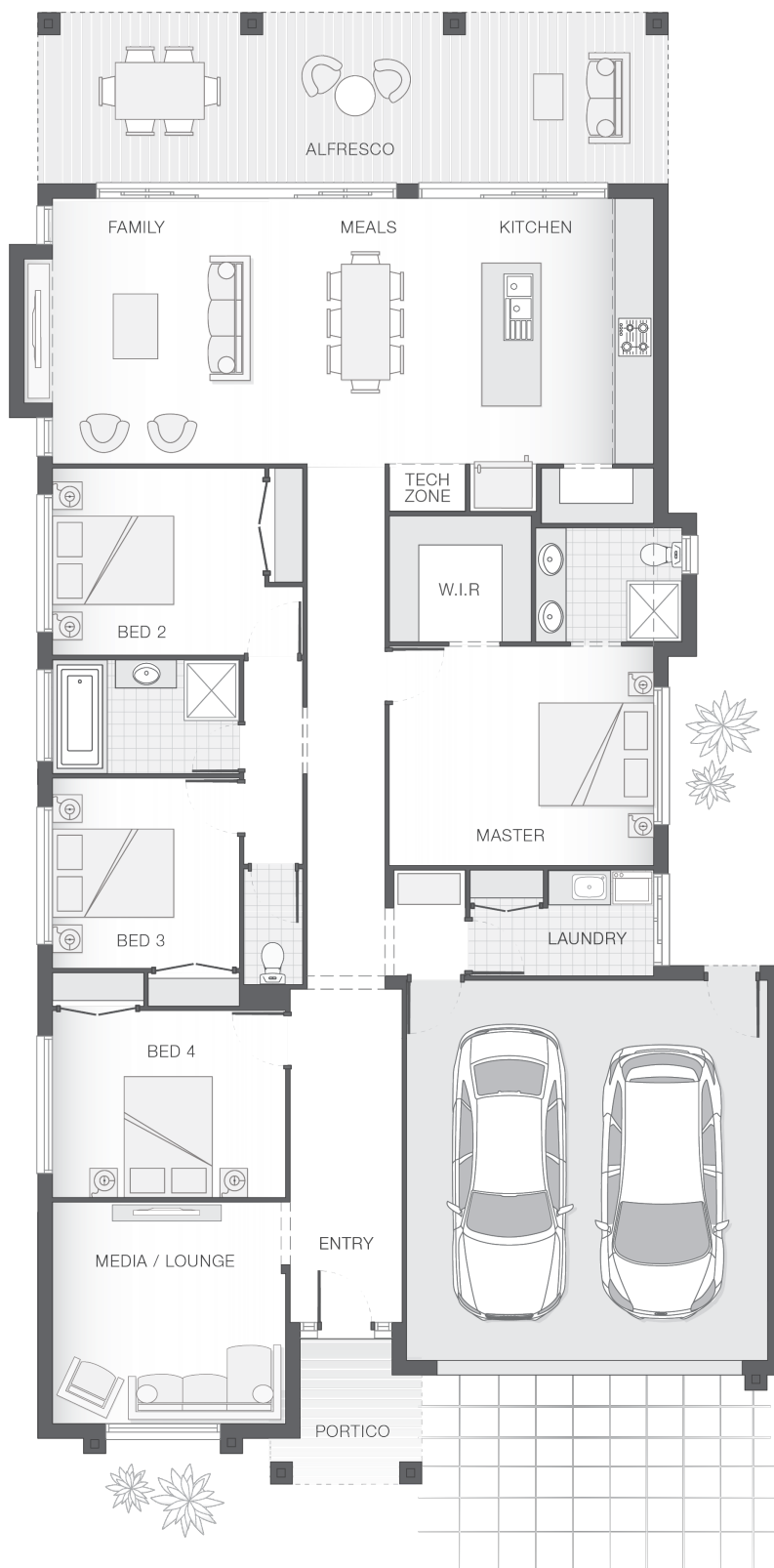
REF: IADEQHL479560

### House Features:

- ✓ Tiling and carpet throughout
- ✓ Exposed aggregate driveway and path
- ✓ 1020mm entry door
- ✓ Flyscreens to windows
- ✓ 20mm stone benchtops to kitchen, ensuite and bathrooms
- ✓ Shower niche to ensuite & bathroom
- ✓ TV antenna and clothesline
- ✓ Daikin ducted air conditioning
- ✓ Monier Atura Low-profile roof tiles or Colorbond roof
- ✓ LED downlights
- ✓ Westinghouse stainless steel dishwasher
- ✓ Externally ducted rangehood
- ✓ Brick and rendered letterbox
- ✓ Tiling and integral slab to alfresco
- ✓ 2590mm ceiling height to lower level
- ✓ Cold water tap to fridge space
- ✓ Soft-close drawers to kitchen, ensuite and bathrooms

### Estate Features:

- ✓ Pallara State School
- ✓ Forest Lake Shopping Centre
- ✓ Richlands Railway Station



### ENQUIRE NOW:

Brendan Wekeem • P: 0400 901 485 • E: [Brendan.wekeem@adenbrook.com.au](mailto:Brendan.wekeem@adenbrook.com.au)

Images depicted on this site are for illustration purposes only. Facades and other images of homes and land estates may include optional upgrades, additional fixtures, finishes and home or estate features that are not included in the base price of the home or land package such as landscaping, feature tiling, decking, furnishing, feature lighting, pools, etc. Land estate pricing and plans are subject to developer guidelines and may vary at any time.