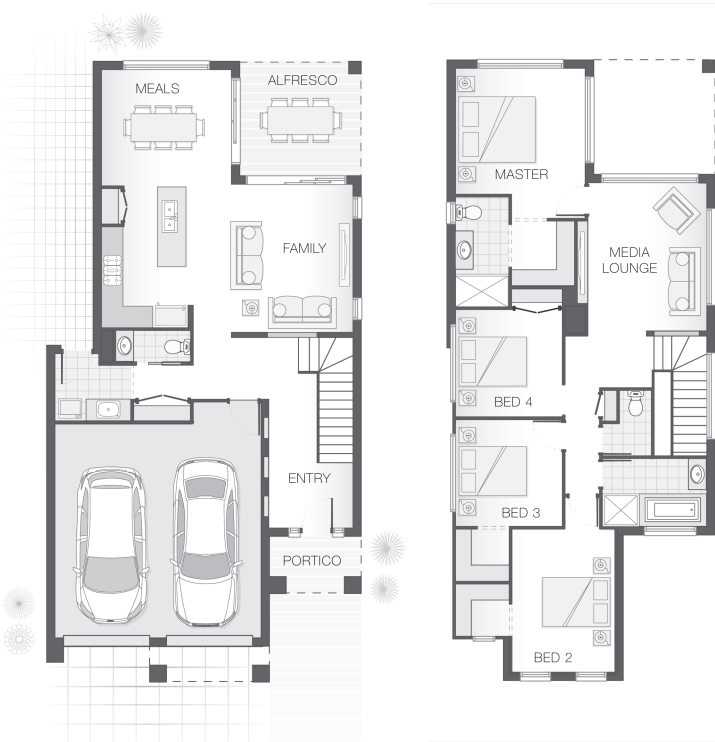


## The Deakon

4 2 2 25 sq

Facade name: Griffin

### House Plan:



LOT #1/84

Corindi Beach

Address: Pacific Street, Corindi Beach, 2456



509 m<sup>2</sup>

House and land package price:

From **\$640,590\***

### About package:

The Deakon home design is compact but punchy. With an outdoor alfresco area that merges seamlessly with the lower level- kitchen, dining and living spaces the lower level is certain to accommodate the entire family. The upper floor provides a stylish layout with master retreat including ensuite and walk-in-robe sensibly separate from additional bedrooms and media room creating a feeling of privacy and space in a compact footprint.

This house and land package is designed to give you a price guide for a particular style of home on a block of land, and is subject to soil and contour tests. We can assist you with an alternative Adenbrook design and block, then customize a package to suit your individual needs and budget.

To view this and our complete range of designs please visit our website:

<http://www.adenbrookhomes.com.au/homes>

Contact our New Home Consultant Niki Whelan on 0412 797 925 at Adenbrook Homes today to further customize this package to suit your needs or for more information about realizing the dream of owning your very own new home. For more details visit our display home OPEN 7 DAYS, 10am to 4pm at: 13 Zenith Avenue, Sandy Beach (02) 6653 6942.

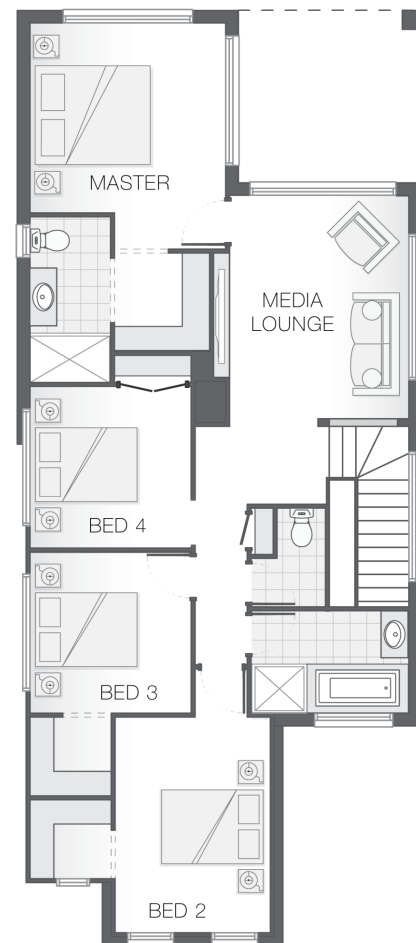
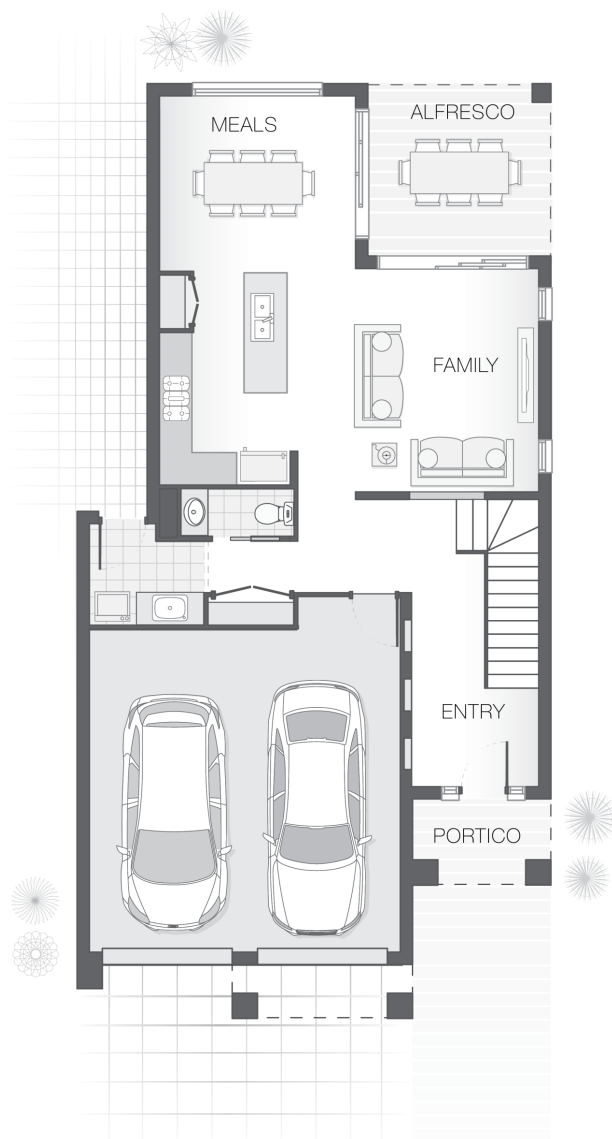
### ENQUIRE NOW:

Niki Whelan • P: 0412 797 925 • E: [coffs.display@adenbrook.com.au](mailto:coffs.display@adenbrook.com.au)

Plans and designs depicted may change with facade selection. All drawings and photographs are for illustrative purposes only. This work is exclusively owned by AB Aust. IP Pty Ltd (ACN 163 575 077) and cannot be reproduced or copied wholly or in part, in any form without permission of AB Aust. IP Pty Ltd. Any prices in this document include GST, are subject to change without notice, relate only to the base house price and standard inclusions. Site costs will vary depending on site conditions, local Council requirements, estate guidelines and any other statutory requirements applicable. Adenbrook Homes does not have a hold on the block, this package is subject to land availability and you securing the land through the land agent directly. For more information please speak to one of our friendly New Home Consultants.

### House Features:

- ✓ 20mm stone benchtops to kitchen
- ✓ 900mm Cooker and Dishwasher
- ✓ Carpet and Tile or Vinyl floors; modern architraves 67mm x 18mm
- ✓ Overhead cupboards to kitchen, 4 shelves to Pantry and Linen
- ✓ Wideline aluminium windows, stacker and sliding doors, and flyscreens
- ✓ Three (3) coat Haymes low toxic internal paint system
- ✓ Double lock-up garage with remotes, mailbox, and clothesline
- ✓ LED downlights throughout and NBN provision
- ✓ 3000L rainwater tank with submersible pump
- ✓ Obscure glazing to bathroom, ensuite and WC
- ✓ M class soil and 500mm fall over building platform
- ✓ Guaranteed build time, fixed price and no hidden costs
- ✓ 3 included facade options and complimentary window changes
- ✓ Services connections, skip bins, site fencing, toilet, and rubbish removal
- ✓ Termite resistant "blue pine" framing and trusses and physical termite barriers
- ✓ 27L gas instantaneous hot water system
- ✓ Brick exterior, concrete tile roof, 45sqm grey concrete driveway
- ✓ Extended polished edge mirrors full wall width
- ✓ Dishwasher
- ✓ Letterbox and Clothesline
- ✓ Remote Controlled Garage Door + 2 remotes



### ENQUIRE NOW:

Niki Whelan • P: 0412 797 925 • E: [coffs.display@adenbrook.com.au](mailto:coffs.display@adenbrook.com.au)

Plans and designs depicted may change with facade selection. All drawings and photographs are for illustrative purposes only. This work is exclusively owned by AB Aust. IP Pty Ltd (ACN 163 575 077) and cannot be reproduced or copied wholly or in part, in any form without permission of AB Aust. IP Pty Ltd. Any prices in this document include GST, are subject to change without notice, relate only to the base house price and standard inclusions. Site costs will vary depending on site conditions, local Council requirements, estate guidelines and any other statutory requirements applicable. Adenbrook Homes does not have a hold on the block, this package is subject to land availability and you securing the land through the land agent directly. For more information please speak to one of our friendly New Home Consultants.