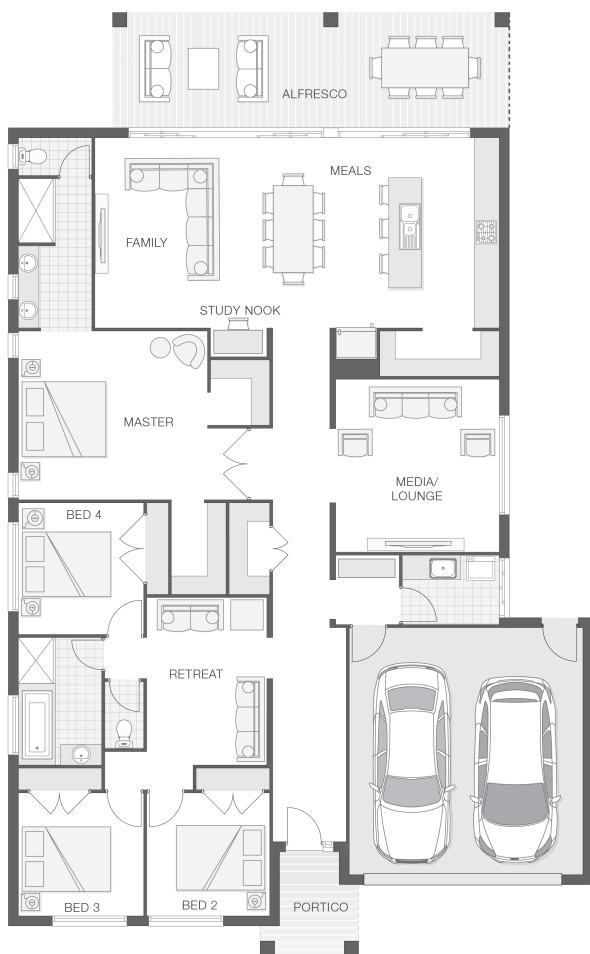


The Indigo

4 2 2 30 sq

Facade name: Haven

House Plan:



LOT #204

Gukandi Estate

Address: Gukandi Street, Laurieton, 2443



707 m²

House and land package price:

From **\$648,028***

About package:

Adenbrook Homes Mid North Coast are a locally owned and operated builder, backed by an award winning franchise. We offer turn-key pricing, designed to give you everything you need to move straight in - without the hidden costs.

The Indigo home design is on trend, tasteful and well-appointed, creating the perfect sanctuary for the modern family. The rear of the home is nothing but lifestyle and entertaining with a huge alfresco space spanning the width of the home that seamlessly blends with the internal hub of kitchen, dining and family rooms. With the luxury of a media room and separate retreat, you are spoilt with multiple living zones and great separation. The lavish master retreat boasts his and her walk-in-robos and great separation from the other bedroom wing.

\$25,000 CASH BONUS AVAILABLE NOW! There has never been a better time to buy a new home than now! The Federal Government has announced a fabulous incentive scheme for new home buyers, with a \$25,000 cash bonus for new home builds. This scheme is available now and will only be available for a limited time, so contact us now to take advantage of this great opportunity. (Eligibility conditions apply)

ENQUIRE NOW:

Angie Walford • P: 0429626412 • E: portmacquarie.display@adenbrook.com.au

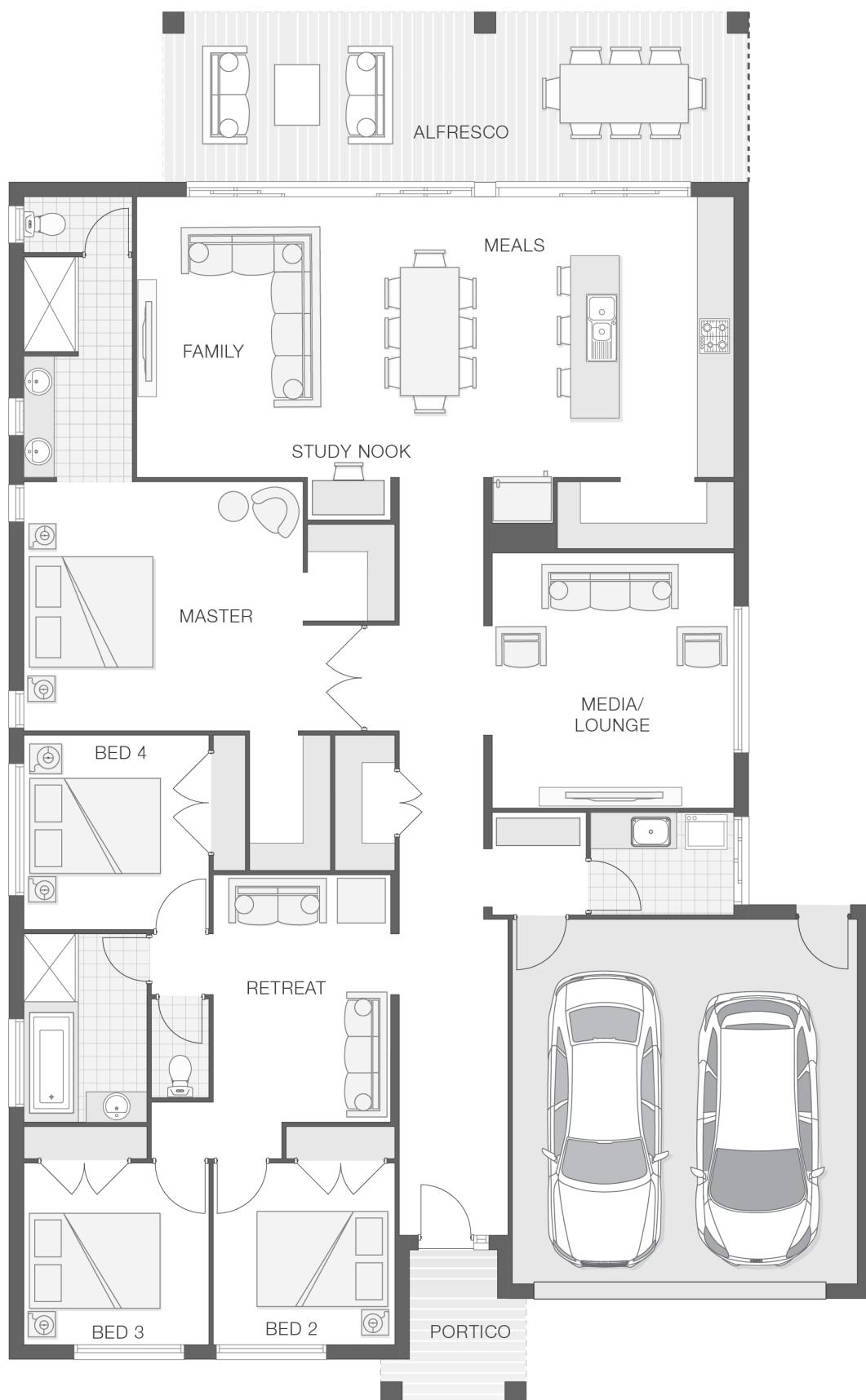
Plans and designs depicted may change with facade selection. All drawings and photographs are for illustrative purposes only. This work is exclusively owned by AB Aust. IP Pty Ltd (ACN 163 575 077) and cannot be reproduced or copied wholly or in part, in any form without permission of AB Aust. IP Pty Ltd. Any prices in this document include GST, are subject to change without notice, relate only to the base house price and standard inclusions. Site costs will vary depending on site conditions, local Council requirements, estate guidelines and any other statutory requirements applicable. Adenbrook Homes does not have a hold on the block, this package is subject to land availability and you securing the land through the land agent directly. For more information please speak to one of our friendly New Home Consultants.

House Features:

- ✓ BAL (Bushfire Attack Level) Allowance
- ✓ 20mm stone benchtops to kitchen
- ✓ Site works allowance
- ✓ Dishwasher
- ✓ Letterbox and Clothesline
- ✓ Brushed Concrete Driveway
- ✓ Flyscreens
- ✓ Quality Timber Look Flooring, Carpet and Tiles
- ✓ Concrete Alfresco and Portico areas
- ✓ Remote Controlled Garage Door + 2 remotes

Estate Features:

- ✓ Close to beaches
- ✓ Large block sizes
- ✓ Serene leafy outlook
- ✓ Close to shops and town centre



ENQUIRE NOW:

Angie Walford • P: 0429626412 • E: portmacquarie.display@adenbrook.com.au

Plans and designs depicted may change with facade selection. All drawings and photographs are for illustrative purposes only. This work is exclusively owned by AB Aust. IP Pty Ltd (ACN 163 575 077) and cannot be reproduced or copied wholly or in part, in any form without permission of AB Aust. IP Pty Ltd. Any prices in this document include GST, are subject to change without notice, relate only to the base house price and standard inclusions. Site costs will vary depending on site conditions, local Council requirements, estate guidelines and any other statutory requirements applicable. Adenbrook Homes does not have a hold on the block, this package is subject to land availability and you securing the land through the land agent directly. For more information please speak to one of our friendly New Home Consultants.