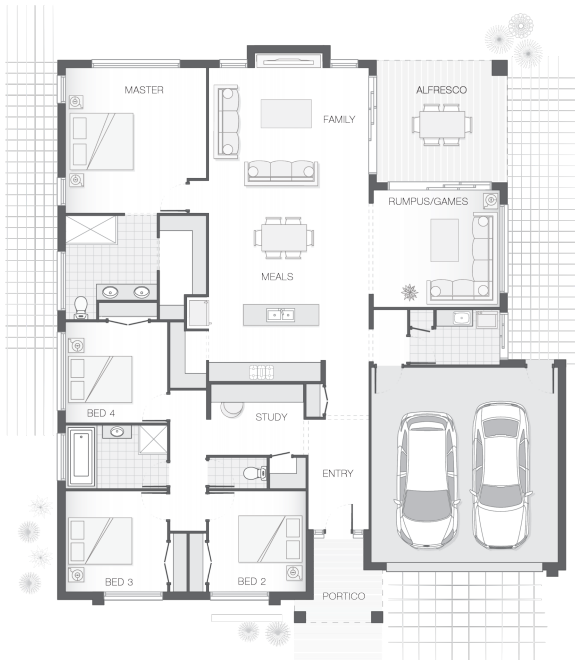




#### House Plan:



#### LOT #12

Endell Street

Address: Endell St, Bridgeman Downs, 4035



753 m<sup>2</sup>

#### The Austin

Package Price From

4

2

2

26 sq

**\$672,315\***

#### About package:

At the Austin, modern family living is all about space to come together as a family and space for quiet time apart. The open living space combines with a rumpus room and alfresco to create a central living and entertaining area that can be used all year round. The master suite is isolated at the rear of the home for privacy while the bedroom wing at the front of the home has a generous study nook for dedicated work-space. The Austin has all the elements today's family needs and a little more.

#### ENQUIRE NOW:

Brendan Wekeem • P: 0400 901 485 • E: [Brendan.wekeem@adenbrook.com.au](mailto:Brendan.wekeem@adenbrook.com.au)

Images depicted on this site are for illustration purposes only. Facades and other images of homes and land estates may include optional upgrades, additional fixtures, finishes and home or estate features that are not included in the base price of the home or land package such as landscaping, feature tiling, decking, furnishing, feature lighting, pools, etc. Land estate pricing and plans are subject to developer guidelines and may vary at any time.

Powered by iBuildNew

adenbrook  
homes

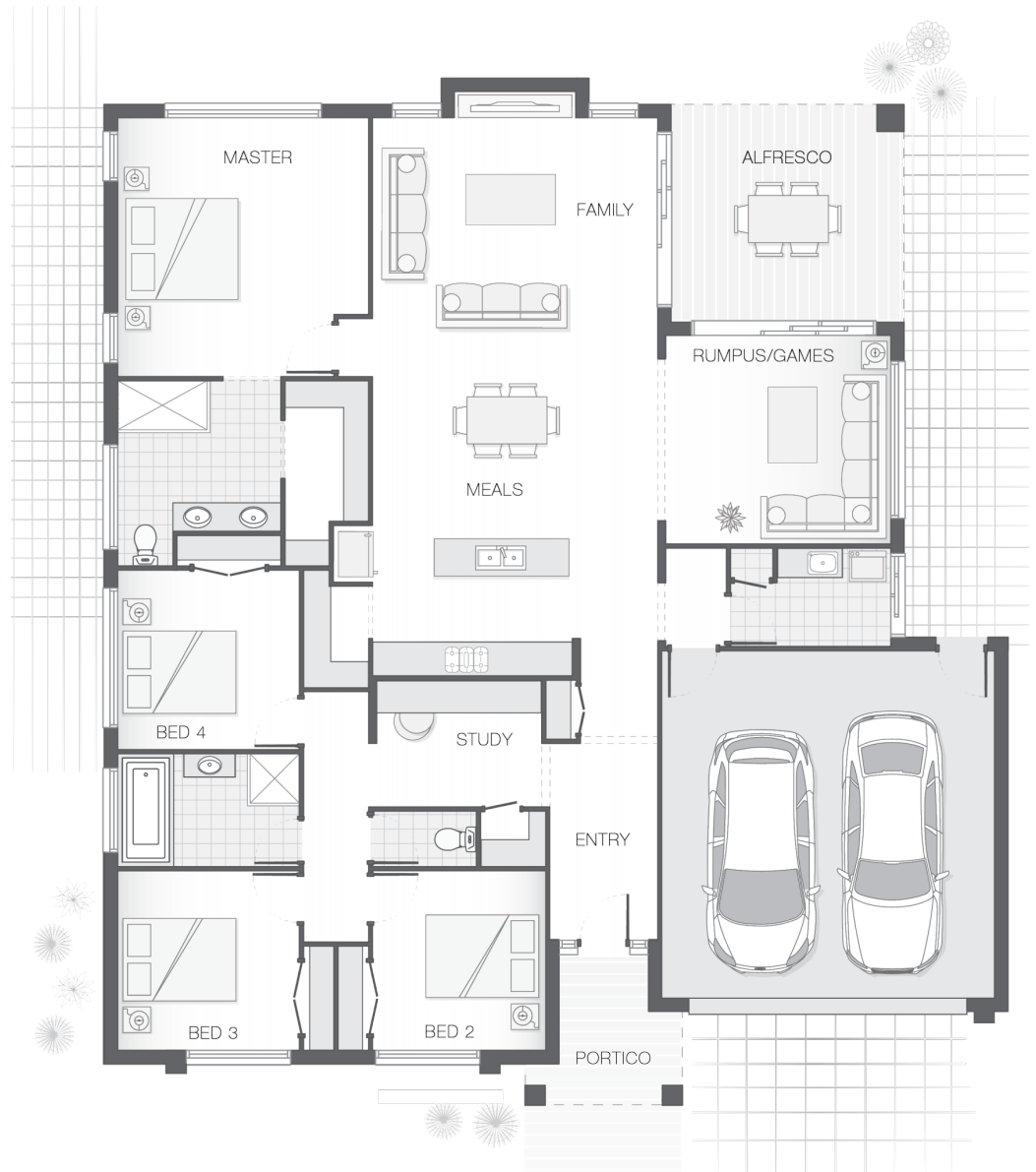
REF: IADEQHL481263

### House Features:

- ✓ Tiling and carpet throughout
- ✓ Exposed aggregate driveway and path
- ✓ 1020mm entry door
- ✓ Monier Atura Low-profile roof tiles or Colorbond roof
- ✓ 2590mm ceiling height to lower level
- ✓ Flyscreens to windows
- ✓ LED downlights
- ✓ Cold water tap to fridge space
- ✓ 20mm stone benchtops to kitchen, ensuite and bathrooms
- ✓ Westinghouse stainless steel dishwasher
- ✓ Externally ducted rangehood
- ✓ Soft-close drawers to kitchen, ensuite and bathrooms
- ✓ Shower niche to ensuite & bathroom

### Estate Features:

- ✓ All Saints School
- ✓ Darien Street Sports Park
- ✓ Westfield Chermside



### ENQUIRE NOW:

Brendan Wekeem • P: 0400 901 485 • E: [Brendan.wekeem@adenbrook.com.au](mailto:Brendan.wekeem@adenbrook.com.au)

Images depicted on this site are for illustration purposes only. Facades and other images of homes and land estates may include optional upgrades, additional fixtures, finishes and home or estate features that are not included in the base price of the home or land package such as landscaping, feature tiling, decking, furnishing, feature lighting, pools, etc. Land estate pricing and plans are subject to developer guidelines and may vary at any time.