



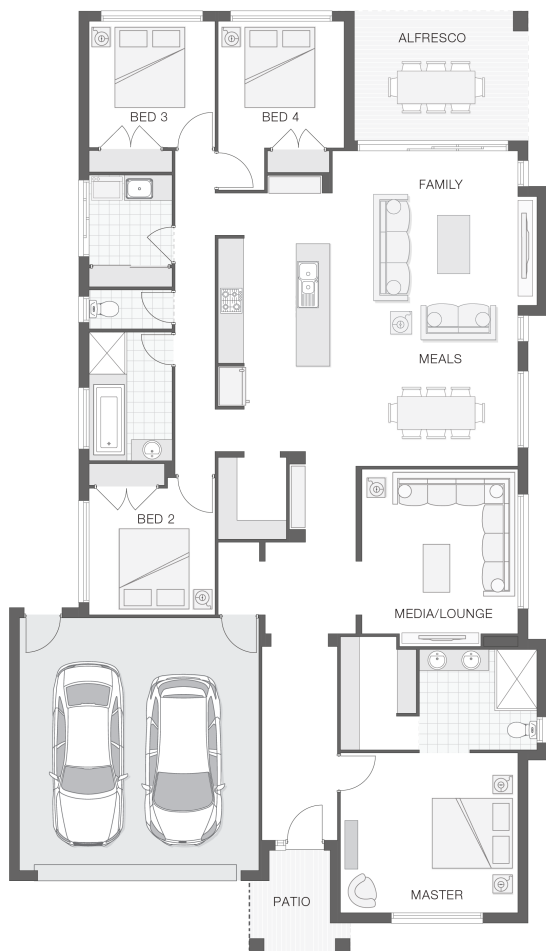


The Orion

 4  2  2  26 sq

Facade name: Arden

House Plan:



LOT #836

Emerald Hills

Address: Shells Circuit, Leppington, 2179



450 m²

House and land package price:

From **\$753,900***

About package:

This Adenbrook Home & Land package is located in the highly sought-after estate of Emerald Hills.

Set on a 475m² block of land, we have coupled it with our Orion home design. With 4 bedrooms, great open-planned living space, and lots of storage space, you don't want to miss out on this one! The open plan living with integrated alfresco encourages a relaxed, casual lifestyle for living and entertaining.

This House and Land Package includes:-

- * Standard Site Costs and Standard Basix Requirements
- * Kayman Facade*
- * Builders range tiles & carpet throughout home
- * Tiling to the Alfresco and Portico
- * Coloured Concrete Driveway
- * Daiken Reverse Cycle Ducted Air Con.
- * Caroma Bathroom Accessories
- * PLUS our fantastic Ultimate Upgrade Bundle!
- Our ULTIMATE BUNDLE PACKAGE has fantastic inclusions of
- * Monier Atura Low Profile Roof Tiles
- * 1020mm Entry Door
- * 20mm Stone benchtop to the kitchen, bathroom and Ensuite.
- * Westinghouse Dishwasher and Microwave, just to name a few

ENQUIRE NOW:

Matthew Micallef • P: 0406 248 064 • E: sydneywest.southwest@adenbrook.com.au

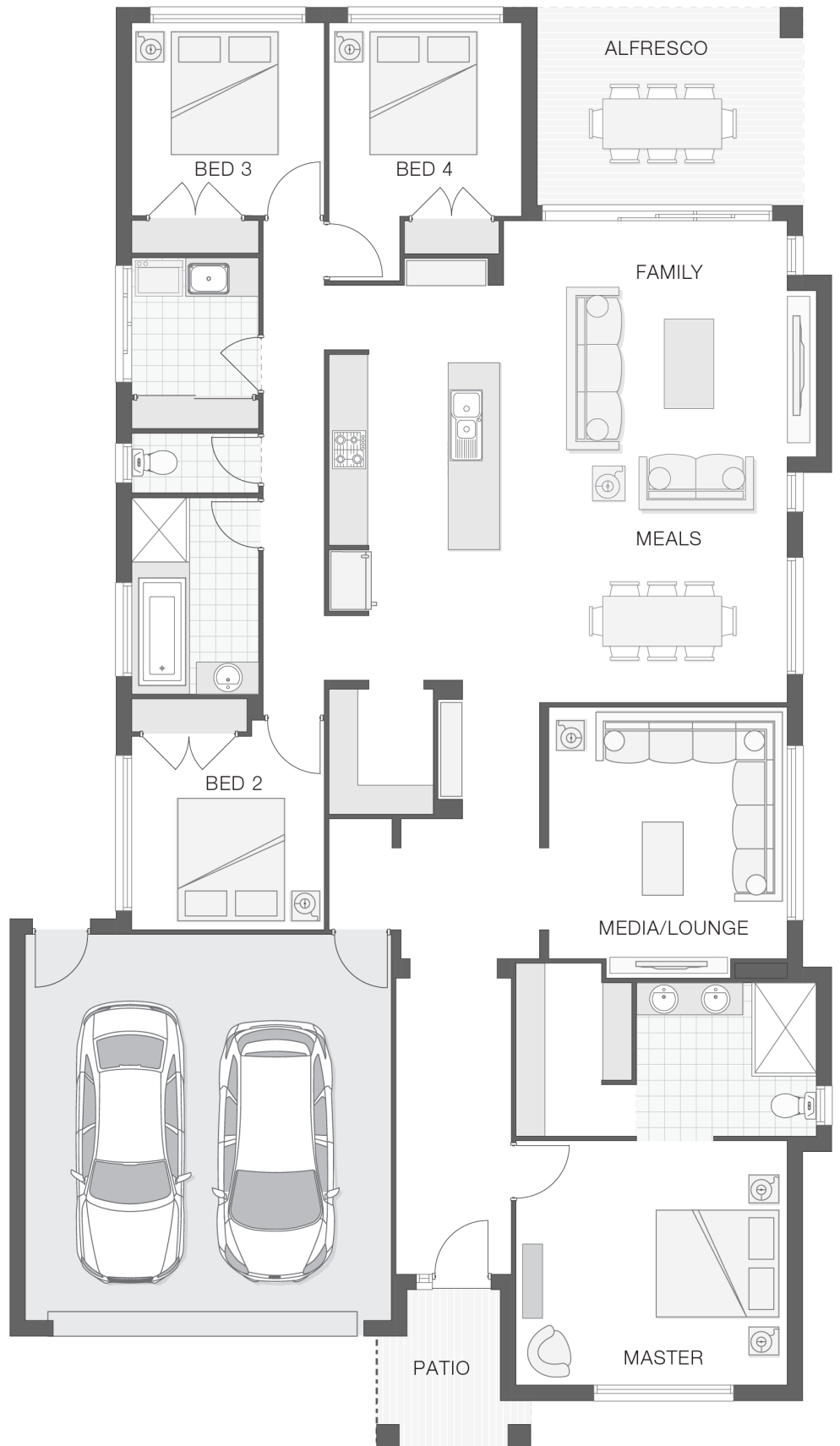
Images depicted on this site are for illustration purposes only. Facades and other images of homes and land estates may include optional upgrades, additional fixtures, finishes and home or estate features that are not included in the base price of the home or land package such as landscaping, feature tiling, decking, furnishing, feature lighting, pools, etc. Land estate pricing and plans are subject to developer guidelines and may vary at any time.

House Features:

- ✓ Standard Site Costs and Standard Basix Requirements
- ✓ Builders range tiles & carpet throughout home
- ✓ Tiling to the Alfresco and Portico
- ✓ Coloured Concrete Driveway
- ✓ Daiken Reverse Cycle Ducted Air Conditioning
- ✓ 1020mm Entry Door
- ✓ 20mm Stone benchtop to the kitchen, bathroom and Ensuite.
- ✓ Westinghouse Cooktop, Oven and Dishwasher

Estate Features:

- ✓ Catherine Field Preschool
- ✓ Willowdale Shopping Centre
- ✓ Leppington Railway Station



ENQUIRE NOW:

Matthew Micallef • P: 0406 248 064 • E: sydneywest.southwest@adenbrook.com.au

Images depicted on this site are for illustration purposes only. Facades and other images of homes and land estates may include optional upgrades, additional fixtures, finishes and home or estate features that are not included in the base price of the home or land package such as landscaping, feature tiling, decking, furnishing, feature lighting, pools, etc. Land estate pricing and plans are subject to developer guidelines and may vary at any time.