

The Capestone

4 2 2 26 sq

Facade name: Benson

House Plan:

LOT #4939

Elara

Address: Marsden Park, 2765



313 m²

House and land package price:

From **\$779,900***

About package:

This Adenbrook Home & Land package is located in the highly sought-after Marsden park..

Set on a 313m2 block of land, we have coupled it with our Capestone home design. With 4 bedrooms, great open-planned living space, and lots of storage space, you don't want to miss out on this one! The open plan living with integrated alfresco encourages a relaxed, casual lifestyle for living and entertaining. Land registration late 2020.

This House and Land Package includes:-

Don't miss out, call Adam today on 0450 076 039 to find out how to make this dream a reality

* Please note that images are indicative only. Please refer to your contract

* Please note that the Facade is indicative only. Please refer to your contract

ENQUIRE NOW:

Adam Khamas • P: 0450076039 • E: adam.khamas@adenbrook.com.au

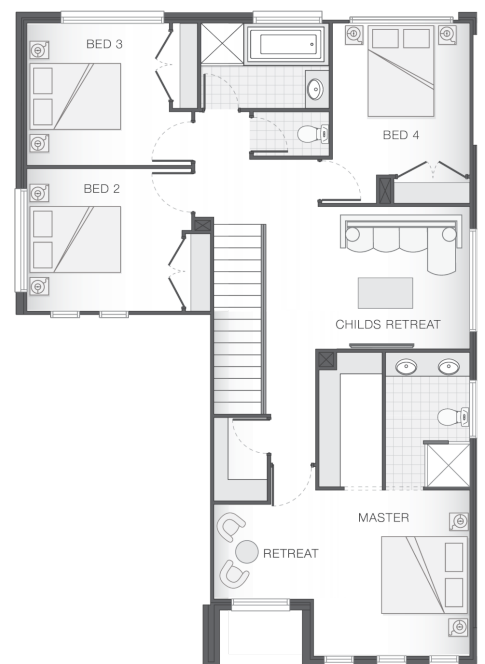
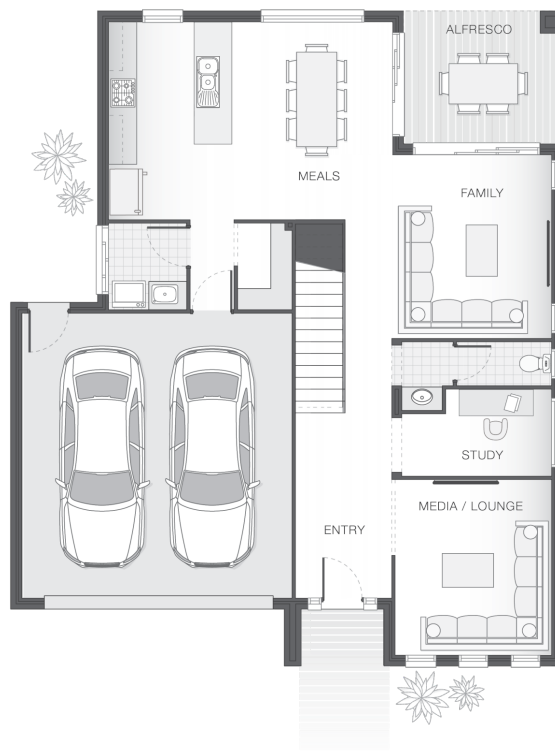
Images depicted on this site are for illustration purposes only. Facades and other images of homes and land estates may include optional upgrades, additional fixtures, finishes and home or estate features that are not included in the base price of the home or land package such as landscaping, feature tiling, decking, furnishing, feature lighting, pools, etc. Land estate pricing and plans are subject to developer guidelines and may vary at any time.

House Features:

- ✓ Render to the home
- ✓ Tiling to the Alfresco and Portico
- ✓ 1020mm Entry Door
- ✓ Standard Site Costs and Standard Basix Requirements
- ✓ Coloured Concrete Driveway
- ✓ 20mm Stone benchtop to the kitchen, bathroom and Ensuite.
- ✓ Westinghouse Cooktop, Oven and Dishwasher
- ✓ Daiken Reverse Cycle Ducted Air Conditioning
- ✓ Builders range tiles & carpet throughout home
- ✓ Shower Niches
- ✓ Clipsal Iconic Ultramodern range Switch Gear
- ✓ 2x Gas Points
- ✓ R2 Walls and R4 Ceiling Insulation
- ✓ Soft-close drawers and doors to Kitchen and Bathrooms
- ✓ Monier Atura low-profile roof tiles
- ✓ Flyscreens To all openable windows
- ✓ Much More...
- ✓ 2590mm Ceiling Upgrade to the Ground Floor Only

Estate Features:

- ✓ Riverstone Station
- ✓ St Luke's Catholic College



ENQUIRE NOW:

Adam Khamas • P: 0450076039 • E: adam.khamas@adenbrook.com.au

Images depicted on this site are for illustration purposes only. Facades and other images of homes and land estates may include optional upgrades, additional fixtures, finishes and home or estate features that are not included in the base price of the home or land package such as landscaping, feature tiling, decking, furnishing, feature lighting, pools, etc. Land estate pricing and plans are subject to developer guidelines and may vary at any time.