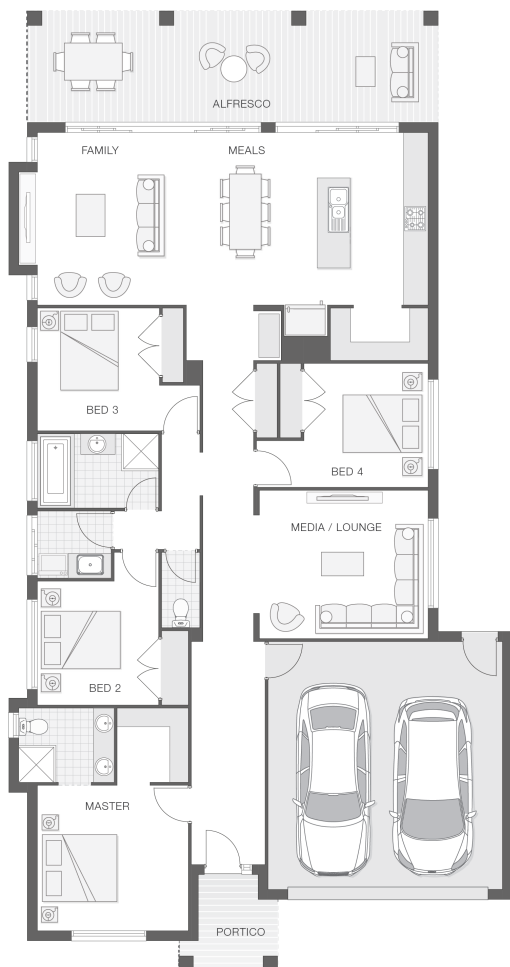


## The Isla - A

4 2 2 25 sq

Facade name: Haven

### House Plan:



### LOT #24

Forster Grange

Address: Kentia Drive, Forster (NSW), 2428



500 m<sup>2</sup>

House and land package price:

From **\$573,915\***

### About package:

The Isla home design is sophisticated and stylish, offering all the modern features that you need to relax, entertain and enjoy! The outdoor entertaining area runs the width of the home and flawlessly integrates with the family room, meals area and generous kitchen complete with butler's pantry creating an oversized entertainers delight. The master retreat with ensuite and walk-in-robe boasts great separation while the central living zone is dedicated to additional bedrooms and the media room.

### ENQUIRE NOW:

Angie Walford • P: 0429626412 • E: portmacquarie.display@adenbrook.com.au

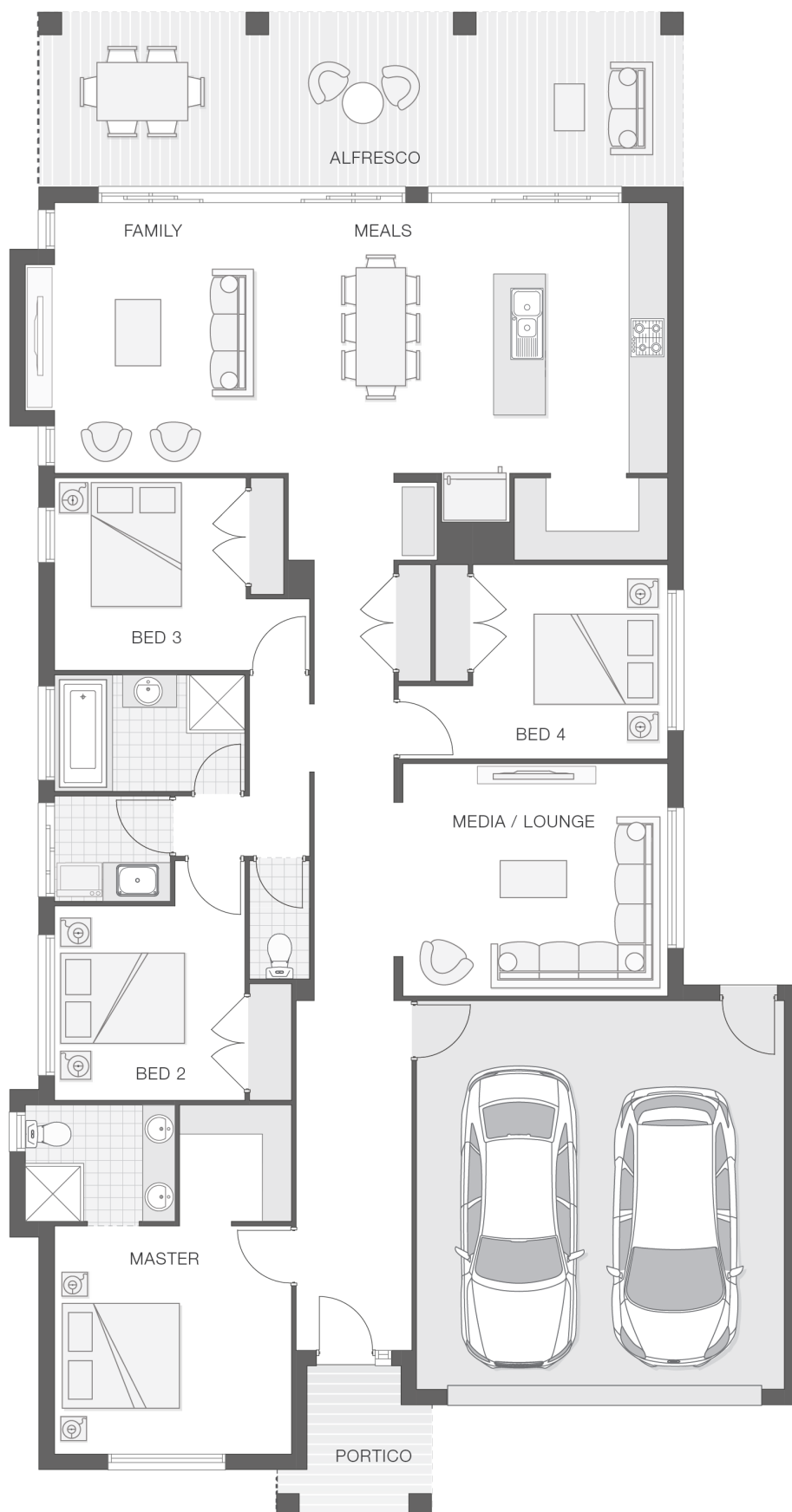
Plans and designs depicted may change with facade selection. All drawings and photographs are for illustrative purposes only. This work is exclusively owned by AB Aust. IP Pty Ltd (ACN 163 575 077) and cannot be reproduced or copied wholly or in part, in any form without permission of AB Aust. IP Pty Ltd. Any prices in this document include GST, are subject to change without notice, relate only to the base house price and standard inclusions. Site costs will vary depending on site conditions, local Council requirements, estate guidelines and any other statutory requirements applicable. Adenbrook Homes does not have a hold on the block, this package is subject to land availability and you securing the land through the land agent directly. For more information please speak to one of our friendly New Home Consultants.

### House Features:

- ✓ 20mm stone benchtops to kitchen
- ✓ Letterbox and Clothesline
- ✓ Dishwasher
- ✓ Concrete Alfresco and Portico areas
- ✓ BAL (Bushfire Attack Level) Allowance
- ✓ Site works allowance
- ✓ Remote Controlled Garage Door + 2 remotes
- ✓ Flyscreens
- ✓ Brushed Concrete Driveway
- ✓ Quality Timber Look Flooring, Carpet and Tiles

### Estate Features:

- ✓ Stocklands Forster just minutes away
- ✓ 3 hours from Sydney
- ✓ Close to beach and lakes
- ✓ Local school within walking distance



### ENQUIRE NOW:

Angie Walford • P: 0429626412 • E: [portmacquarie.display@adenbrook.com.au](mailto:portmacquarie.display@adenbrook.com.au)

Plans and designs depicted may change with facade selection. All drawings and photographs are for illustrative purposes only. This work is exclusively owned by AB Aust. IP Pty Ltd (ACN 163 575 077) and cannot be reproduced or copied wholly or in part, in any form without permission of AB Aust. IP Pty Ltd. Any prices in this document include GST, are subject to change without notice, relate only to the base house price and standard inclusions. Site costs will vary depending on site conditions, local Council requirements, estate guidelines and any other statutory requirements applicable. Adenbrook Homes does not have a hold on the block, this package is subject to land availability and you securing the land through the land agent directly. For more information please speak to one of our friendly New Home Consultants.