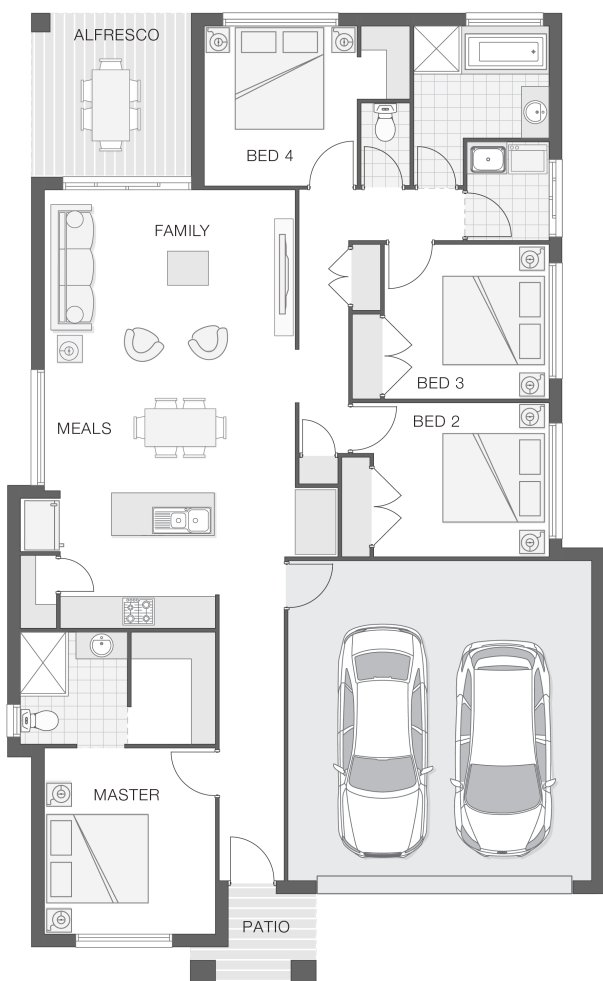


The Willow - MK2

4 2 2 19 sq

Facade name: Taylor

House Plan:



LOT #4939

Elara

Address: Marsden Park, 2765



313 m²

House and land package price:

From **\$708,183***

About package:

This Adenbrook Home & Land package is located in the highly sought-after Marsden park..

Set on a 313m2 block of land, we have coupled it with our Willow MK2 home design. With 4 bedrooms, great open-planned living space, and lots of storage space, you don't want to miss out on this one! The open plan living with integrated alfresco encourages a relaxed, casual lifestyle for living and entertaining. Land registration late 2020.

Don't miss out, call Adam today on 0450 076 039 to find out how to make this dream a reality

* Please note that images are indicative only. Please refer to your contract

* Images depicted on this site are for illustration purposes online. Facades and other images of homes and land estates may include optional upgrades, additional fixtures, finishes and home or estate features that are not included in the base prices of the home or land package such as landscaping, feature tiling, decking, furnishing, feature lighting, pools, etc. Land estate pricing and plans are subject to developer guidelines and may vary at any time.

ENQUIRE NOW:

Adam Khamas • P: 0450 076 039 • E: adamkhamas@adenbrook.com.au

Images depicted on this site are for illustration purposes only. Facades and other images of homes and land estates may include optional upgrades, additional fixtures, finishes and home or estate features that are not included in the base price of the home or land package such as landscaping, feature tiling, decking, furnishing, feature lighting, pools, etc. Land estate pricing and plans are subject to developer guidelines and may vary at any time.

Powered by iBuildNew

adenbrook
homes

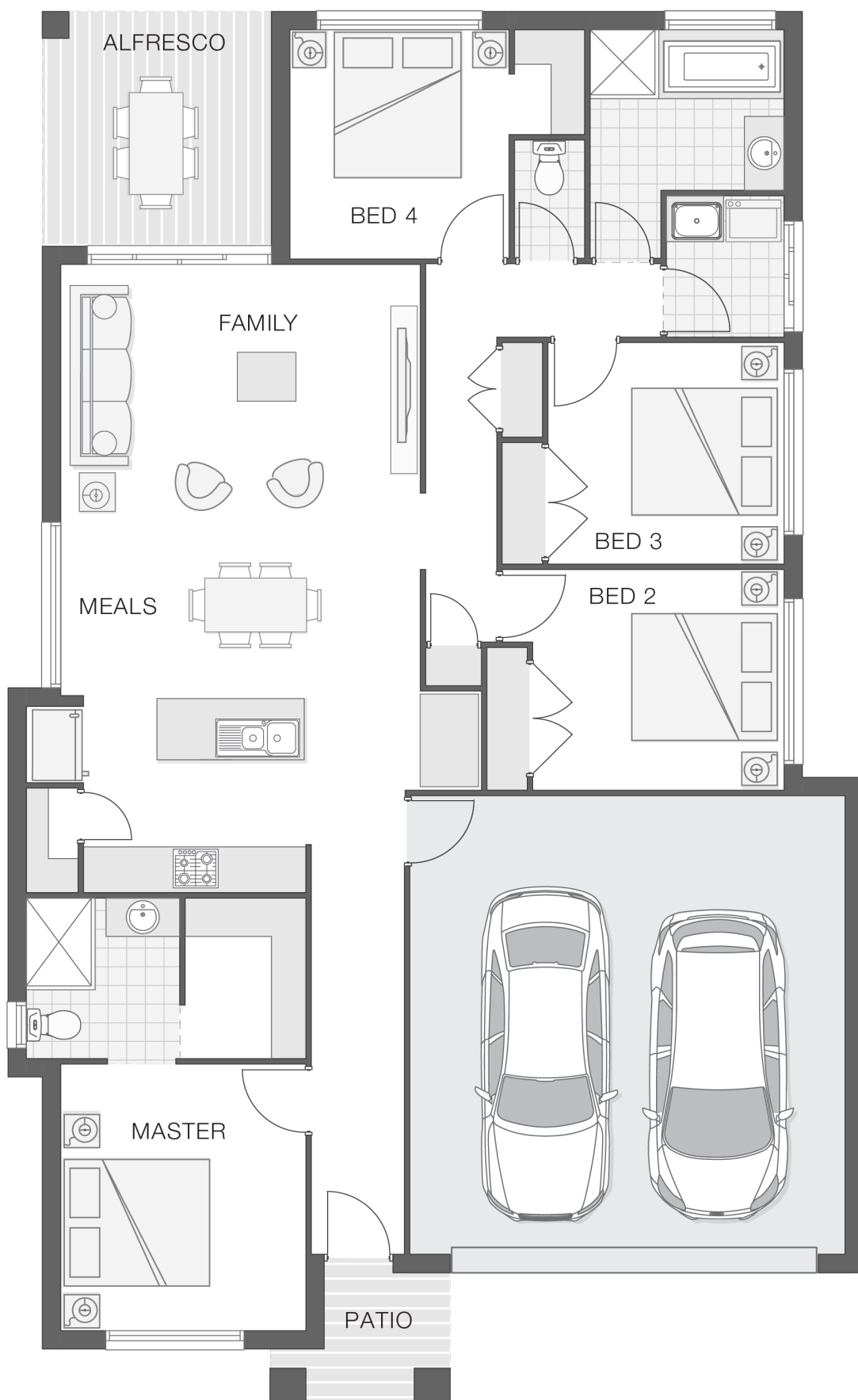
REF: IADENHL482070

House Features:

- ✓ Tiling to the Alfresco and Portico
- ✓ 1020mm Entry Door
- ✓ Standard Site Costs and Standard Basix Requirements
- ✓ Coloured Concrete Driveway
- ✓ Builders range tiles & carpet throughout home
- ✓ Daiken Reverse Cycle Ducted Air Conditioning
- ✓ Westinghouse Cooktop, Oven and Dishwasher
- ✓ 20mm Stone benchtop to the kitchen, bathroom and Ensuite.
- ✓ 2x Gas Points
- ✓ R2 Walls and R4 Ceiling Insulation
- ✓ Soft-close drawers and doors to Kitchen and Bathrooms
- ✓ Clipsal Iconic Ultramodern range Switch Gear
- ✓ 2590mm Ceiling Upgrade to the Ground Floor Only
- ✓ Flyscreens To all openable windows
- ✓ Monier Atura low-profile roof tiles
- ✓ Shower Niches

Estate Features:

- ✓ Marsden Park Home
- ✓ St Luke's Catholic College
- ✓ Riverstone Station



ENQUIRE NOW:

Adam Khamas • P: 0450 076 039 • E: adamkhamas@adenbrook.com.au

Images depicted on this site are for illustration purposes only. Facades and other images of homes and land estates may include optional upgrades, additional fixtures, finishes and home or estate features that are not included in the base price of the home or land package such as landscaping, feature tiling, decking, furnishing, feature lighting, pools, etc. Land estate pricing and plans are subject to developer guidelines and may vary at any time.