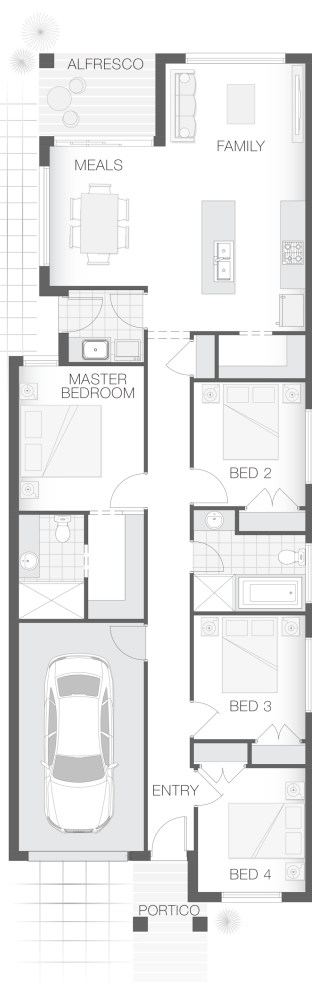


The Phoenix

4 2 1 16 sq

Facade name: Byron

House Plan:



LOT #110

Crown Hill

Address: Kewba St, Riverstone, 2765



328 m²

House and land package price:

From **\$688,964***

About package:

This Adenbrook Home & Land package is located in the highly sought-after estate of Crown Hill in Riverstone.

Set on a 328m² block of land, we have coupled it with our Phoenix home design. With 4 bedrooms, great open-planned living space, and lots of storage space, you don't want to miss out on this one! The open plan living with integrated alfresco encourages a relaxed, casual lifestyle for living and entertaining.

Don't miss out, call Adam today on 0450 076 039 to find out how to make this dream a reality

ENQUIRE NOW:

Adam Khamas • P: 0450076039 • E: adam.khamas@adenbrook.com.au

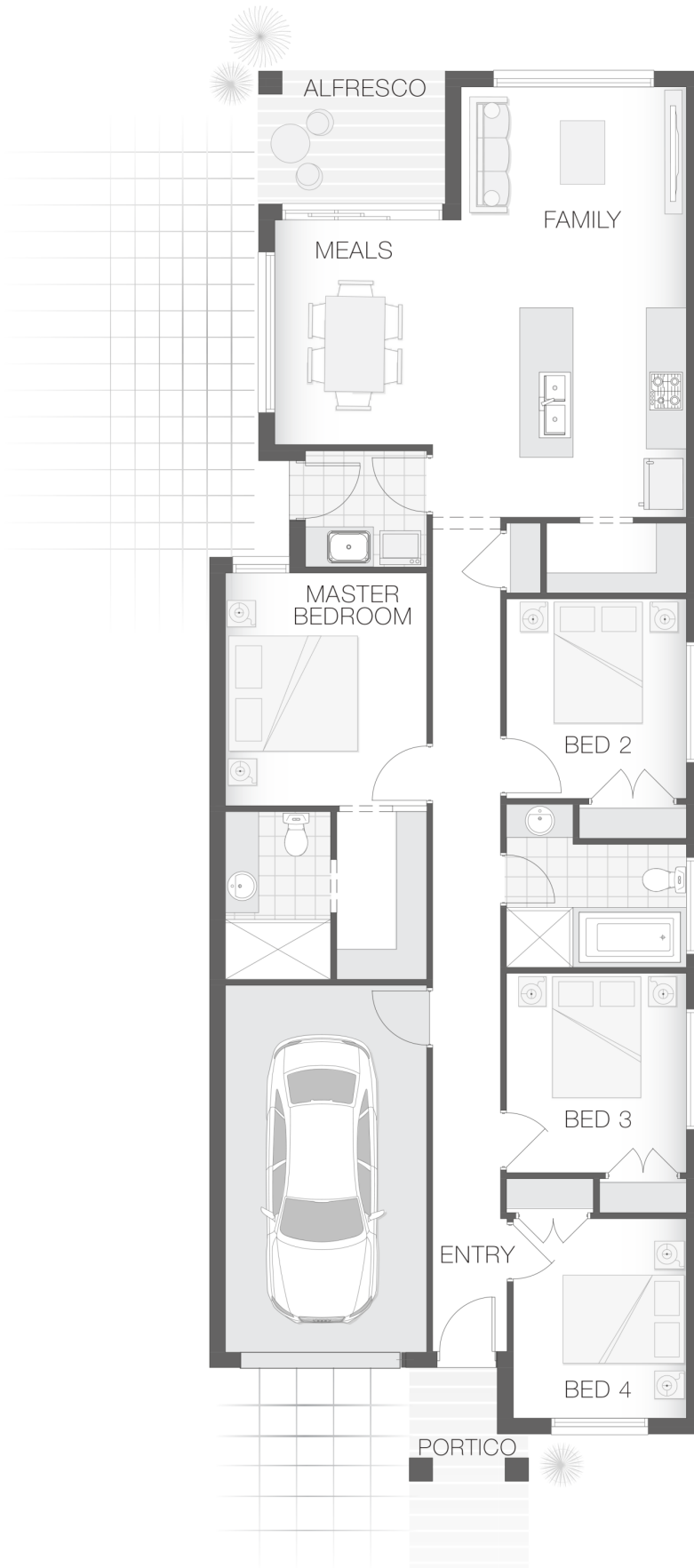
Images depicted on this site are for illustration purposes only. Facades and other images of homes and land estates may include optional upgrades, additional fixtures, finishes and home or estate features that are not included in the base price of the home or land package such as landscaping, feature tiling, decking, furnishing, feature lighting, pools, etc. Land estate pricing and plans are subject to developer guidelines and may vary at any time.

House Features:

- ✓ Standard Site Costs and Standard Basix Requirements
- ✓ Coloured Concrete Driveway
- ✓ Tiling to the Alfresco and Portico
- ✓ 1020mm Entry Door
- ✓ 20mm Stone benchtop to the kitchen, bathroom and Ensuite.
- ✓ 2x Gas Points
- ✓ R2 Walls and R4 Ceiling Insulation
- ✓ Builders range tiles & carpet throughout home
- ✓ Daiken Reverse Cycle Ducted Air Conditioning
- ✓ Westinghouse Cooktop, Oven and Dishwasher
- ✓ Shower Niches
- ✓ Monier Atura low-profile roof tiles
- ✓ Flyscreens To all openable windows
- ✓ 2590mm Ceiling Upgrade to the Ground Floor Only
- ✓ Soft-close drawers and doors to Kitchen and Bathrooms
- ✓ Clipsal Iconic Ultramodern range Switch Gear
- ✓ Much More...

Estate Features:

- ✓ Riverstone Train Station
- ✓ Riverstone High School
- ✓ NBN Ready
- ✓ Rouse Hill Regional Park



ENQUIRE NOW:

Adam Khamas • P: 0450076039 • E: adam.khamas@adenbrook.com.au

Images depicted on this site are for illustration purposes only. Facades and other images of homes and land estates may include optional upgrades, additional fixtures, finishes and home or estate features that are not included in the base price of the home or land package such as landscaping, feature tiling, decking, furnishing, feature lighting, pools, etc. Land estate pricing and plans are subject to developer guidelines and may vary at any time.