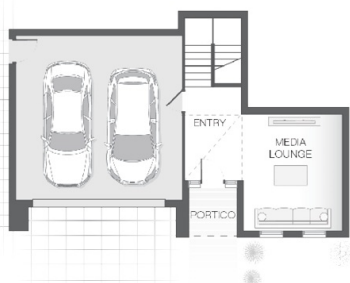


The Bella

4 2 2 27 sq

Facade name: Marlow

House Plan:



LOT #38

Rainbow Beach Estate

Address: Stage 4, Lake Cathie, 2445



608.7 m²

House and land package price:

From **\$717,002***

About package:

Adenbrook Homes Mid North Coast are a locally owned and operated builder, backed by an award winning franchise. We offer turn-key pricing, designed to give you everything you need to move straight in - without the hidden costs.

The Bella home design is efficiently and thoughtfully designed to suit a sloping block, maximising available space. With separate living zones there is plenty of space for entertaining in the open plan central zone including alfresco area, while maintaining privacy and peace in the master retreat. The Bella, like its namesake is a beautiful family home that will be certain to impress.

Our Outstanding Ultimate Bundle Upgrade Includes;

- 20mm stone benchtops to kitchen
- BAL (Bushfire Attack Level) Allowance
- Quality Timber Look Flooring, Carpet and Tiles
- 900mm Cooker and Dishwasher
- Rainwater Tank Letterbox and Clothesline
- Concrete Alfresco and Portico areas
- Brushed Concrete Driveway
- Flyscreens
- Remote Controlled Garage Door + 2 remotes
- Site works allowance
- 2570mm high ceilings
- Hume Savoy 1200 hinged entry door

ENQUIRE NOW:

Angie Walford • P: 0429626412 • E: portmacquarie.display@adenbrook.com.au

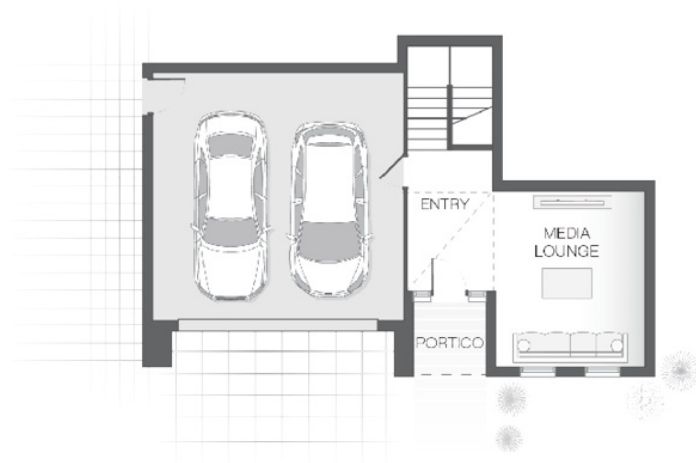
Plans and designs depicted may change with facade selection. All drawings and photographs are for illustrative purposes only. This work is exclusively owned by AB Aust. IP Pty Ltd (ACN 163 575 077) and cannot be reproduced or copied wholly or in part, in any form without permission of AB Aust. IP Pty Ltd. Any prices in this document include GST, are subject to change without notice, relate only to the base house price and standard inclusions. Site costs will vary depending on site conditions, local Council requirements, estate guidelines and any other statutory requirements applicable. Adenbrook Homes does not have a hold on the block, this package is subject to land availability and you securing the land through the land agent directly. For more information please speak to one of our friendly New Home Consultants.

House Features:

- ✓ 1200mm Hinged Wideline Aluminium Entry Door
- ✓ 2570mm high ceilings
- ✓ Dishwasher
- ✓ 20mm stone benchtops to kitchen
- ✓ Letterbox and Clothesline
- ✓ Grey water connection
- ✓ Remote Controlled Garage Door + 2 remotes
- ✓ Flyscreens
- ✓ BAL (Bushfire Attack Level) Allowance
- ✓ Site works allowance

Estate Features:

- ✓ Close to beach
- ✓ Short drive to Lake Cathie shopping village
- ✓ Close to school
- ✓ 20 minutes to Port Macquarie
- ✓ Close to Medical Centre
- ✓ Close to Lake



ENQUIRE NOW:

Angie Walford • P: 0429626412 • E: portmacquarie.display@adenbrook.com.au

Plans and designs depicted may change with facade selection. All drawings and photographs are for illustrative purposes only. This work is exclusively owned by AB Aust. IP Pty Ltd (ACN 163 575 077) and cannot be reproduced or copied wholly or in part, in any form without permission of AB Aust. IP Pty Ltd. Any prices in this document include GST, are subject to change without notice, relate only to the base house price and standard inclusions. Site costs will vary depending on site conditions, local Council requirements, estate guidelines and any other statutory requirements applicable. Adenbrook Homes does not have a hold on the block, this package is subject to land availability and you securing the land through the land agent directly. For more information please speak to one of our friendly New Home Consultants.