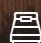
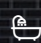




## The Sinclair - A

 5  2  2  31 sq

Facade name: Chadstone

### House Plan:

### LOT #LOT 313

Savanah

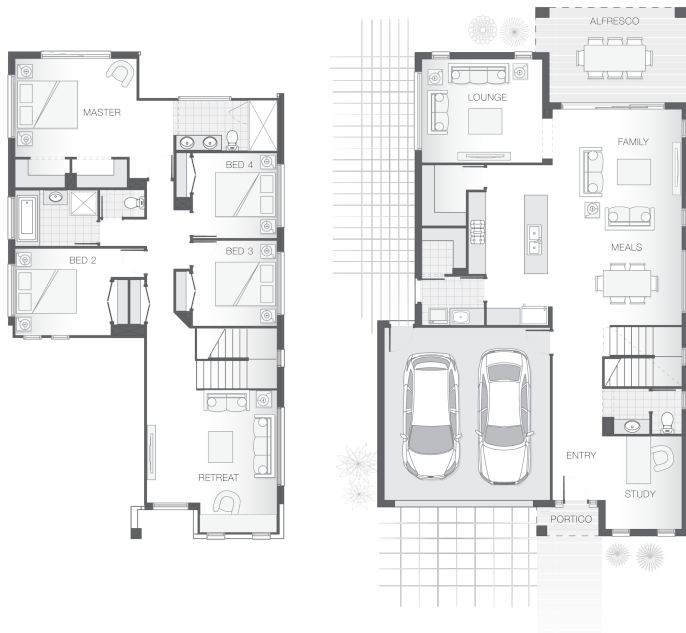
Address: Marsh Road, Silverdale (NSW), 2752



450 m<sup>2</sup>

House and land package price:

From **\$756,289\***



### About package:

This Adenbrook Home & Land package is located in the highly sought-after estate of Silverdale.

Set on a 450m<sup>2</sup> block of land, we have coupled it with our Sinclair A home design. From the moment you step into the Sinclair generous entry you will appreciate the stylish design that offers so much for both the family and entertainer. This home offers an abundance of space for family living including a stylish master suite with his and hers walk-in robes, large shower and dual vanities. With 4 bedrooms, great open-planned living space, and lots of storage space, you don't want to miss out on this one! The open plan living with integrated alfresco encourages a relaxed, casual lifestyle for living and entertaining. Land registers late 2020. This House and Land Package includes:-

- \* Standard Site Costs and Standard Basix Requirements
- \* Builders range tiles & carpet throughout home
- \* Tiling to the Alfresco and Portico
- \* Coloured Concrete Driveway
- \* Daiken Reverse Cycle Ducted Air Con.
- \* Caroma Bathroom Accessories
- \* PLUS our fantastic Ultimate Upgrade Bundle!
- Our ULTIMATE BUNDLE PACKAGE has fantastic inclusions of
- \* Monier Atura Low Profile Roof Tiles
- \* 1020mm Entry Door
- \* 20mm Stone benchtop to the kitchen, bathroom and Ensuite
- \* Westinghouse Dishwasher and Microwave, just to name a few

Don't miss out, call Bec to find out how to make this dream a reality

### ENQUIRE NOW:

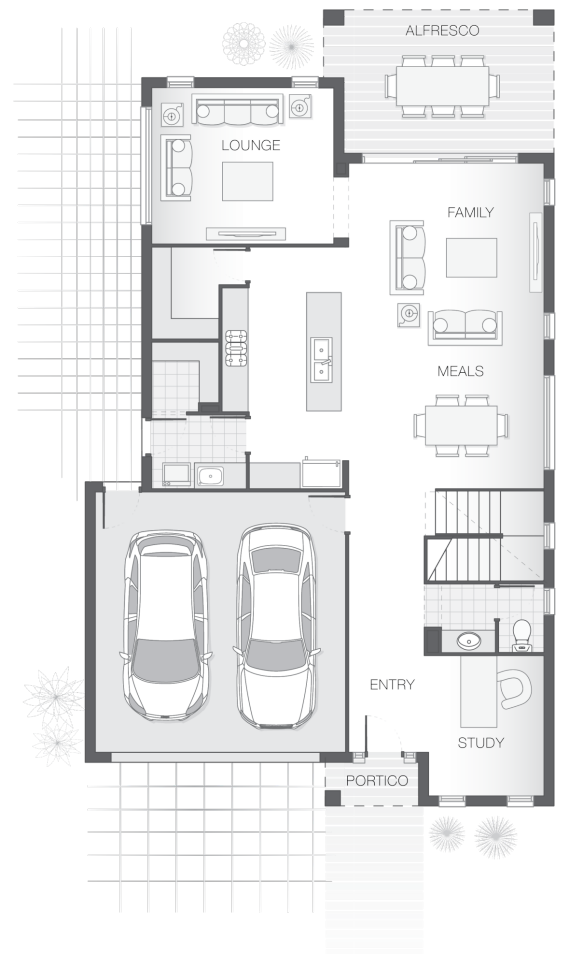
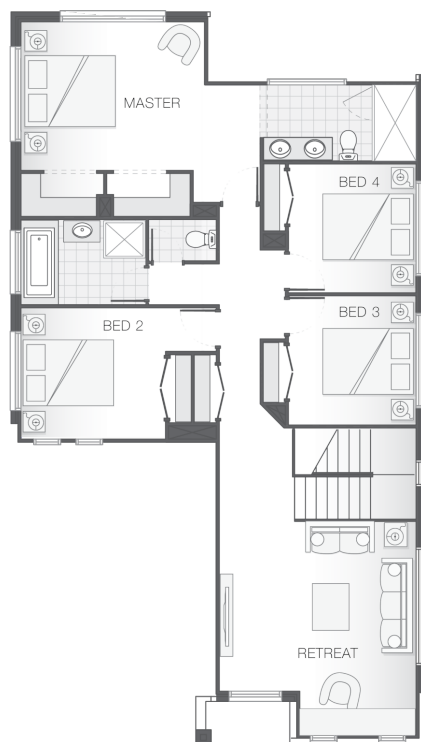
Bec Hoyer • P: 0417427799 • E: [sydneywest.southwest@adenbrook.com.au](mailto:sydneywest.southwest@adenbrook.com.au)

adenbrook  
homes

Images depicted on this site are for illustration purposes only. Facades and other images of homes and land estates may include optional upgrades, additional fixtures, finishes and home or estate features that are not included in the base price of the home or land package such as landscaping, feature tiling, decking, furnishing, feature lighting, pools, etc. Land estate pricing and plans are subject to developer guidelines and may vary at any time.

### House Features:

- ✓ Standard Site Costs and Standard Basix Requirements
- ✓ Builders range tiles & carpet throughout home
- ✓ Tiling to the Alfresco and Portico
- ✓ Coloured Concrete Driveway
- ✓ Daiken Reverse Cycle Ducted Air Conditioning
- ✓ 1020mm Entry Door
- ✓ 20mm Stone benchtop to the kitchen, bathroom and Ensuite.
- ✓ Westinghouse Cooktop, Oven and Dishwasher
- ✓ Shower Niches
- ✓ 2x Gas Points
- ✓ Monier Atura low-profile roof tiles
- ✓ R2 Walls and R4 Ceiling Insulation
- ✓ Flyscreens To all openable windows
- ✓ Clipsal Iconic Ultramodern range Switch Gear
- ✓ Soft-close drawers and doors to Kitchen and Bathrooms
- ✓ Much More...
- ✓ 2590mm Ceiling Upgrade to the Ground Floor Only



### ENQUIRE NOW:

Bec Hoyer • P: 0417427799 • E: [sydneywest.southwest@adenbrook.com.au](mailto:sydneywest.southwest@adenbrook.com.au)

Images depicted on this site are for illustration purposes only. Facades and other images of homes and land estates may include optional upgrades, additional fixtures, finishes and home or estate features that are not included in the base price of the home or land package such as landscaping, feature tiling, decking, furnishing, feature lighting, pools, etc. Land estate pricing and plans are subject to developer guidelines and may vary at any time.