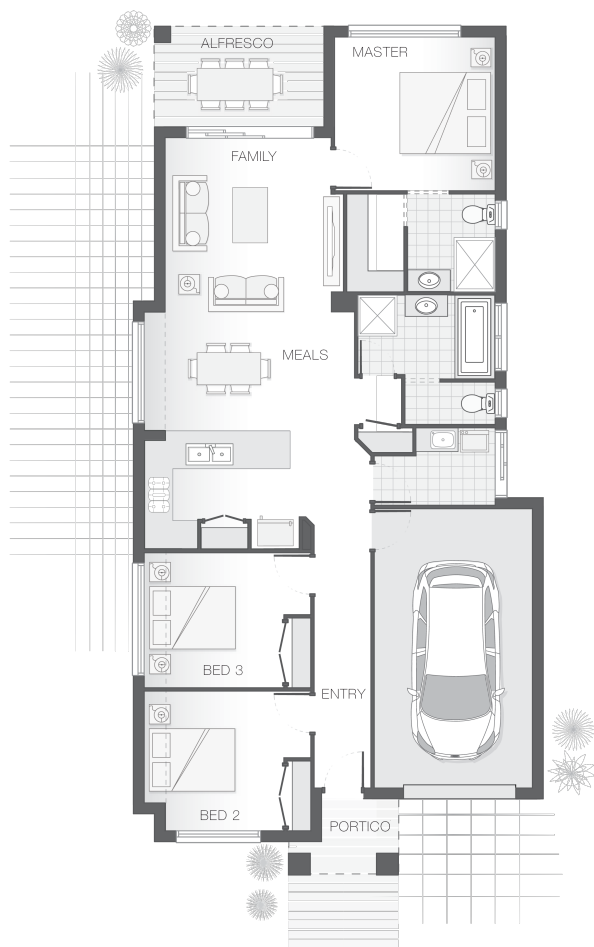




House Plan:



LOT #526

Brookhaven

Address: Brookhaven Blvd, Bahrs Scrub, 4207



350 m²

The Dawson - Gold Coast

Package Price From

3

2

1

142 m²

\$384,854*

About package:

THE HOME: The Dawson home design is contemporary and intended to accommodate a small lot, yet still deliver on space, featuring a clever layout that is ideal for the growing family. The master retreat occupies the rear of the home alongside the alfresco dining space which flows through the open plan family, meals and kitchen zones then onto the additional bedrooms. The slim design ensures comfort while providing functionality for entertaining and family living.

THE LOCATION: Brookhaven by Frasers Property is a sustainable master-planned community situated in Bahrs Scrub located within the growing southern corridor centrally located between Brisbane and the Gold Coast. Tucked away and surrounded with rolling hills and picturesque brooks, Brookhaven is just 4.8kms from the Pacific Motorway (M1), placing Brisbane 35 minutes away and Gold Coast just 45 minutes away. Situated out of the hustle and bustle, Brookhaven offers the best of both worlds, with an escape from it all and easy access to major centres. Within a 5km radius there are shopping centres, retailers, local markets and schools making Brookhaven a sought-after address for growing families.

This Home and Land package comes with a vast array of features such as:

- Floor coverings throughout (Tiles + Carpet)
- Stone benchtops to Kitchen and Bathrooms
- Stainless Steel Westinghouse appliances
- 20 LED Downlights
- Concrete Driveway & Path

ENQUIRE NOW:

Con Sgouros • P: 0404 308 208 • E: goldcoast@adenbrook.com.au

Images depicted on this site are for illustration purposes only. Facades and other images of homes and land estates may include optional upgrades, additional fixtures, finishes and home or estate features that are not included in the base price of the home or land package such as landscaping, feature tiling, decking, furnishing, feature lighting, pools, etc. Land estate pricing and plans are subject to developer guidelines and may vary at any time.

Powered by iBuildNew

adenbrook
homes

REF: IADEQHL483591