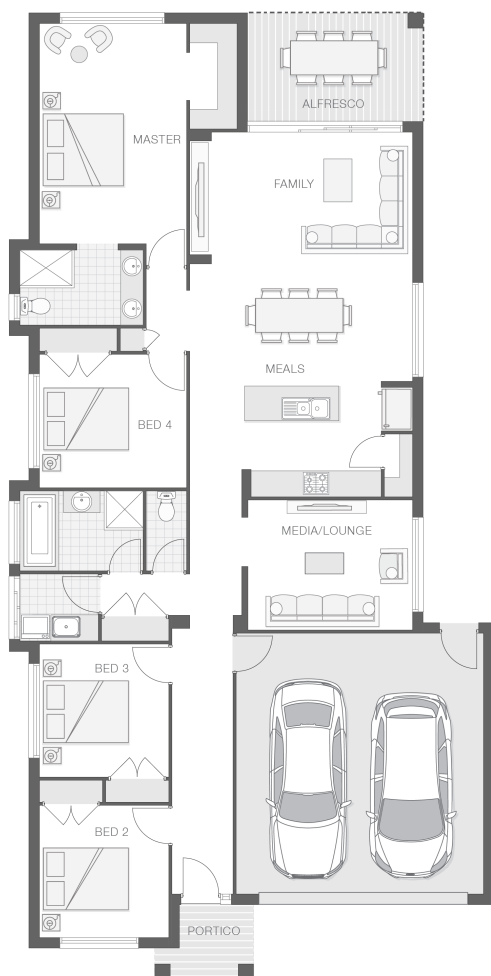




House Plan:



LOT #123

Eastwood Estate

Address: Mahogany Parade, Goonellabah, 2480



776 m²

The Keppel

Package Price From

4 2 2 22 sq

\$520,401*

About package:

This property has not yet been built.

Build your own dream home in the growing suburb of Goonellabah, in the new Eastwood Estate!

Enjoy contemporary coastal living in sub-tropical northern New South Wales. Just a 30 minute drive to beaches and a close commute to Ballina.

The Keppel design smartly ties the best of all home features into a neatly sized floorplan.

About Adenbrook Homes

We are highly focused on customer service and quality and are committed to build homes to exceed expectations. You will be dealing with the builder directly throughout the build to ensure a smooth building journey.

All images used are for illustrative purposes only and are artist's impressions. Facade images may show items such as entry doors. Window sizing and placement may vary between house types and sizes. Refer to floor plan brochures or working drawings for specific detail.

Some images may depict features not supplied by Adenbrook Homes including landscaping, pools, water features, window furnishings, fireplaces, wall furnishings and finishes, cladding, in built joinery, decorative lighting, décor and furniture. Price pending on final disclosure plans.

ENQUIRE NOW:

Russell Wasley • P: 0466 872 229 • E: northern.rivers@adenbrook.com.au

Images depicted on this site are for illustration purposes only. Facades and other images of homes and land estates may include optional upgrades, additional fixtures, finishes and home or estate features that are not included in the base price of the home or land package such as landscaping, feature tiling, decking, furnishing, feature lighting, pools, etc. Land estate pricing and plans are subject to developer guidelines and may vary at any time.