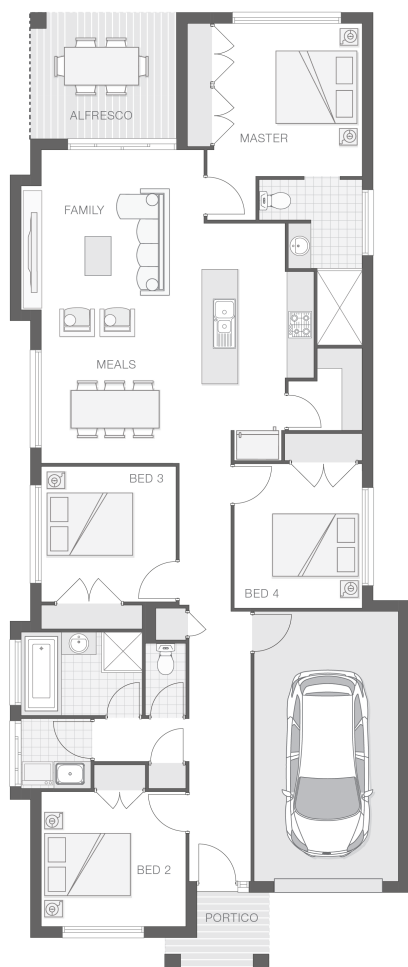


The Macleay

4 2 1 18 sq

Facade name: Arden

House Plan:



LOT #LOT 5222

The Hills Of Carmel

Address: Boundary Road, Box Hill (NSW), 2765



300 m²

House and land package price:

From **\$688,919***

About package:

This Adenbrook Home & Land package is located in the highly sought-after Box Hill..

Set on a 300m2 block of land, we have coupled it with our Macleay home design. With 4 bedrooms, great open-planned living space, and lots of storage space, you don't want to miss out on this one! The open plan living with integrated alfresco encourages a relaxed, casual lifestyle for living and entertaining. Land is registered and ready for the build.

This House and Land Package includes:-

- * Standard Site Costs and Standard Basix Requirements
- * Builders range tiles & carpet throughout home
- * Tiling to the Alfresco and Portico
- * Coloured Concrete Driveway
- * Daiken Reverse Cycle Ducted Air Con.
- * Caroma Bathroom Accessories
- * PLUS our fantastic Ultimate Upgrade Bundle!
- Our ULTIMATE BUNDLE PACKAGE has fantastic inclusions of
- * Monier Atura Low Profile Roof Tiles
- * 1020mm Entry Door
- * 20mm Stone benchtop to the kitchen, bathroom and Ensuite.
- * Westinghouse Dishwasher and Microwave, just to name a few

Don't miss out, enquire today to find out how to make this dream a reality

* Please note that images are indicative only. Please refer to your contract

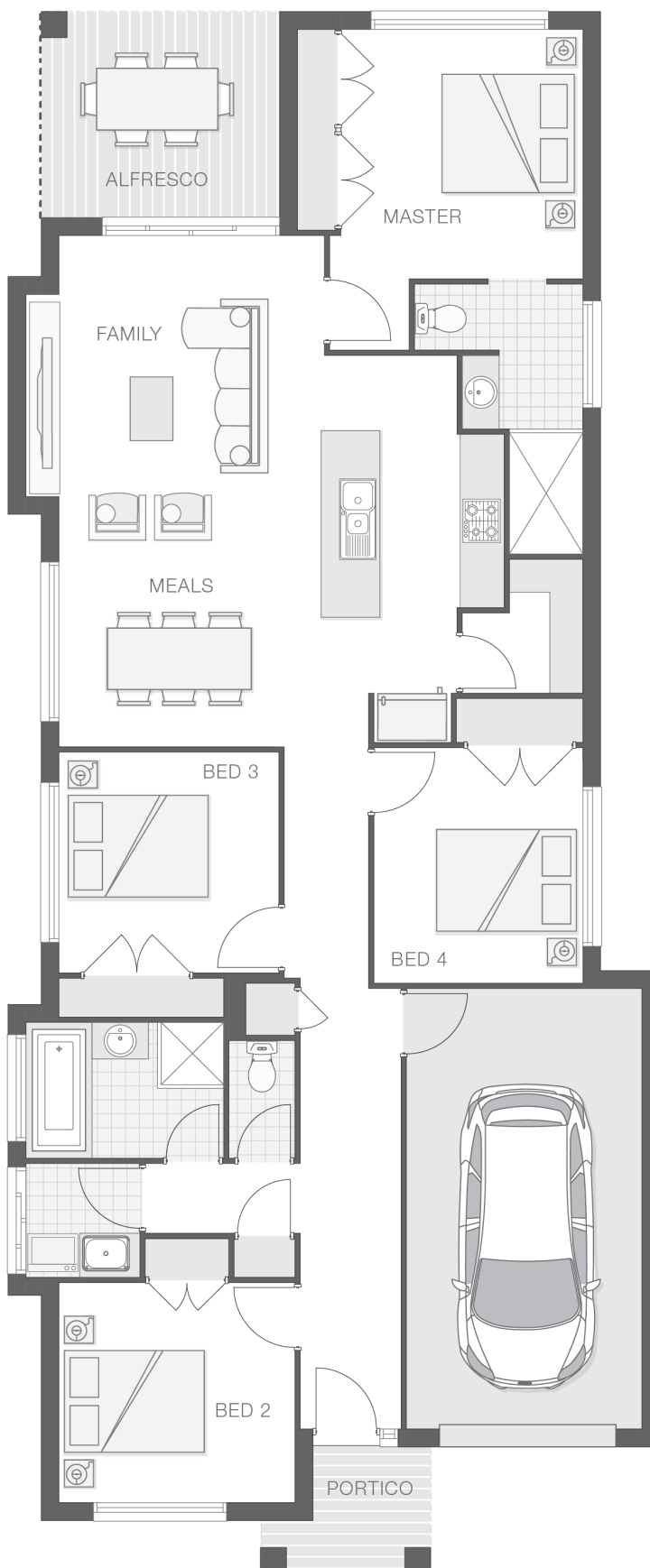
ENQUIRE NOW:

Bec Hoyer • P: 0417427799 • E: sydneywest.southwest@adenbrook.com.au

Plans and designs depicted may change with facade selection. All drawings and photographs are for illustrative purposes only. This work is exclusively owned by AB Aust. IP Pty Ltd (ACN 163 575 077) and cannot be reproduced or copied wholly or in part, in any form without permission of AB Aust. IP Pty Ltd. Any prices in this document include GST, are subject to change without notice, relate only to the base house price and standard inclusions. Site costs will vary depending on site conditions, local Council requirements, estate guidelines and any other statutory requirements applicable. Adenbrook Homes does not have a hold on the block, this package is subject to land availability and you securing the land through the land agent directly. For more information please speak to one of our friendly New Home Consultants.

House Features:

- ✓ Standard Site Costs and Standard Basix Requirements
- ✓ Builders range tiles & carpet throughout home
- ✓ Tiling to the Alfresco and Portico
- ✓ Coloured Concrete Driveway
- ✓ Daiken Reverse Cycle Ducted Air Conditioning
- ✓ 1020mm Entry Door
- ✓ 20mm Stone benchtop to the kitchen, bathroom and Ensuite.
- ✓ Westinghouse Cooktop, Oven and Dishwasher
- ✓ Shower Niches
- ✓ 2x Gas Points
- ✓ Monier Atura low-profile roof tiles
- ✓ R2 Walls and R4 Ceiling Insulation
- ✓ Flyscreens To all openable windows
- ✓ Clipsal Iconic Ultramodern range Switch Gear
- ✓ Soft-close drawers and doors to Kitchen and Bathrooms
- ✓ Much More...
- ✓ 2590mm Ceiling Upgrade to the Ground Floor Only



ENQUIRE NOW:

Bec Hoyer • P: 0417427799 • E: sydneywest.southwest@adenbrook.com.au

Plans and designs depicted may change with facade selection. All drawings and photographs are for illustrative purposes only. This work is exclusively owned by AB Aust. IP Pty Ltd (ACN 163 575 077) and cannot be reproduced or copied wholly or in part, in any form without permission of AB Aust. IP Pty Ltd. Any prices in this document include GST, are subject to change without notice, relate only to the base house price and standard inclusions. Site costs will vary depending on site conditions, local Council requirements, estate guidelines and any other statutory requirements applicable. Adenbrook Homes does not have a hold on the block, this package is subject to land availability and you securing the land through the land agent directly. For more information please speak to one of our friendly New Home Consultants.