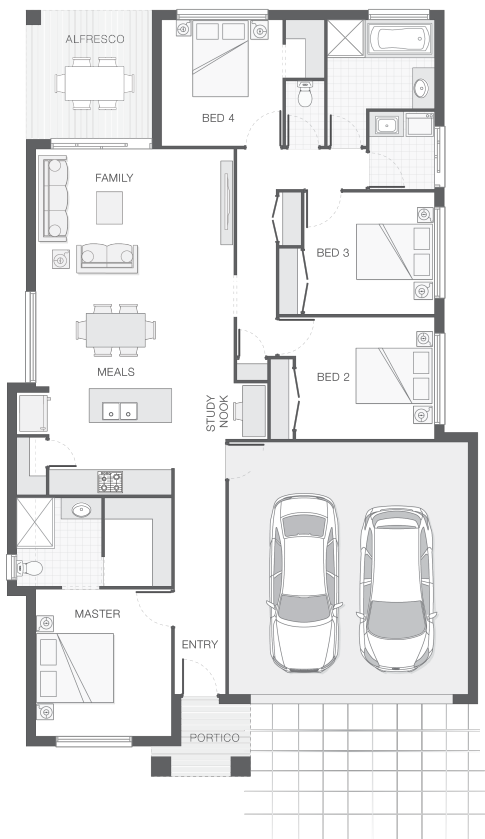




House Plan:



LOT #185

Foreshore, Coomera

Address: Foreshore St, Coomera, 4209



369 m²

The Willow - MK2 - Gold Coast

Package Price From

4 2 2 178 m²

\$518,991*

About package:

This Adenbrook Home & Land package is located in the ever popular Stockland, Foreshore Estate at Coomera.

Set on a lovely 369 sqm corner block, coupled with our Willow MK2 home design this package consists of 4 bedrooms, 2 bathrooms (ensuite to main), study nook and double garage with internal access.

This package comes with a vast array of features such as:

- Exposed Aggregate Concrete Driveway
- Stone Benchtops to Kitchen & Bathrooms
- Stainless Steel Westinghouse Appliances
- LED Downlights
- Internal Floor Coverings (tiles & carpet)
- Undercover Alfresco Entertaining Area
- Soft Close Doors & Drawers to Kitchen and Bathrooms
- Upgraded 1020 entry door
- Dishwasher & Built-In Microwave
- Plus much, much more!

Land is now registered so you could start building sooner than you ever imagined.

Call Con Sgouros now on 0404 308 208 for further details or email con.sgouros@adenbrook.com.au

ENQUIRE NOW:

Con Sgouros • P: 0404 308 208 • E: goldcoast@adenbrook.com.au

Images depicted on this site are for illustration purposes only. Facades and other images of homes and land estates may include optional upgrades, additional fixtures, finishes and home or estate features that are not included in the base price of the home or land package such as landscaping, feature tiling, decking, furnishing, feature lighting, pools, etc. Land estate pricing and plans are subject to developer guidelines and may vary at any time.