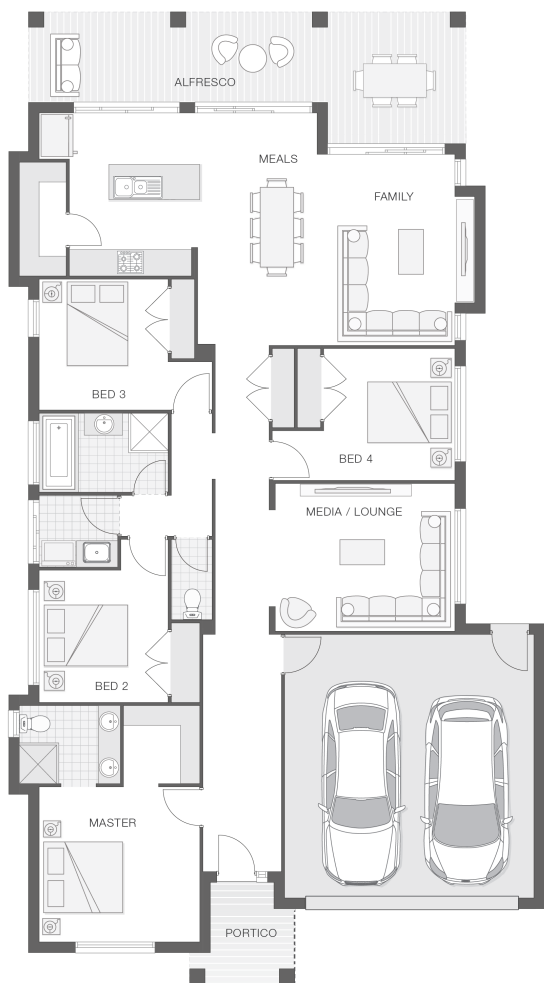


The Isla

4 2 2 24 sq

Facade name: Lennox

House Plan:



LOT #51

Gibraltar View Estate

Address: Gibraltar View Estate, Junction Hill, Grafton,
2460



700 m²

House and land package price:

From **\$451,350***

About package:

This home and land package is based on our Isla design, a stylish 4 bedroom family home with separate zones for the master and kids rooms and all the living areas flow onto a lovely undercover alfresco area. This block is in the beautiful setting on Gibraltar Estate at Junction Hill Grafton.

What's included in your beautifully finished, high quality new home

- All Council Fees and Approvals with M Class Soil
- Full sarking wrap to treated timber frames and roof
- Insulation to walls and ceiling, flyscreens
- Carpet / tiles or vinyl flooring
- Recessed wet areas
- Westinghouse appliances
- Alfresco with recessed stacking sliding doors
- Drop in laundry tub with cabinet and clothesline
- Full electrical layout with downlights and feature lighting and TV aerial
- Water tank, mailbox and concrete driveway

Our Ultimate Bundle Promotion is Available Now included at No Cost;

- Hume Savoy 1200mm hinged entry door
- 2570mm ceiling height with Square set ceilings
- 20mm stone benchtops, Dishwasher and 900mm freestanding cooker
- Upgraded Basins, tap wear and niches to showers

Why Choose Adenbrook Homes

- Local Builder with local knowledge and experience and 15 years of

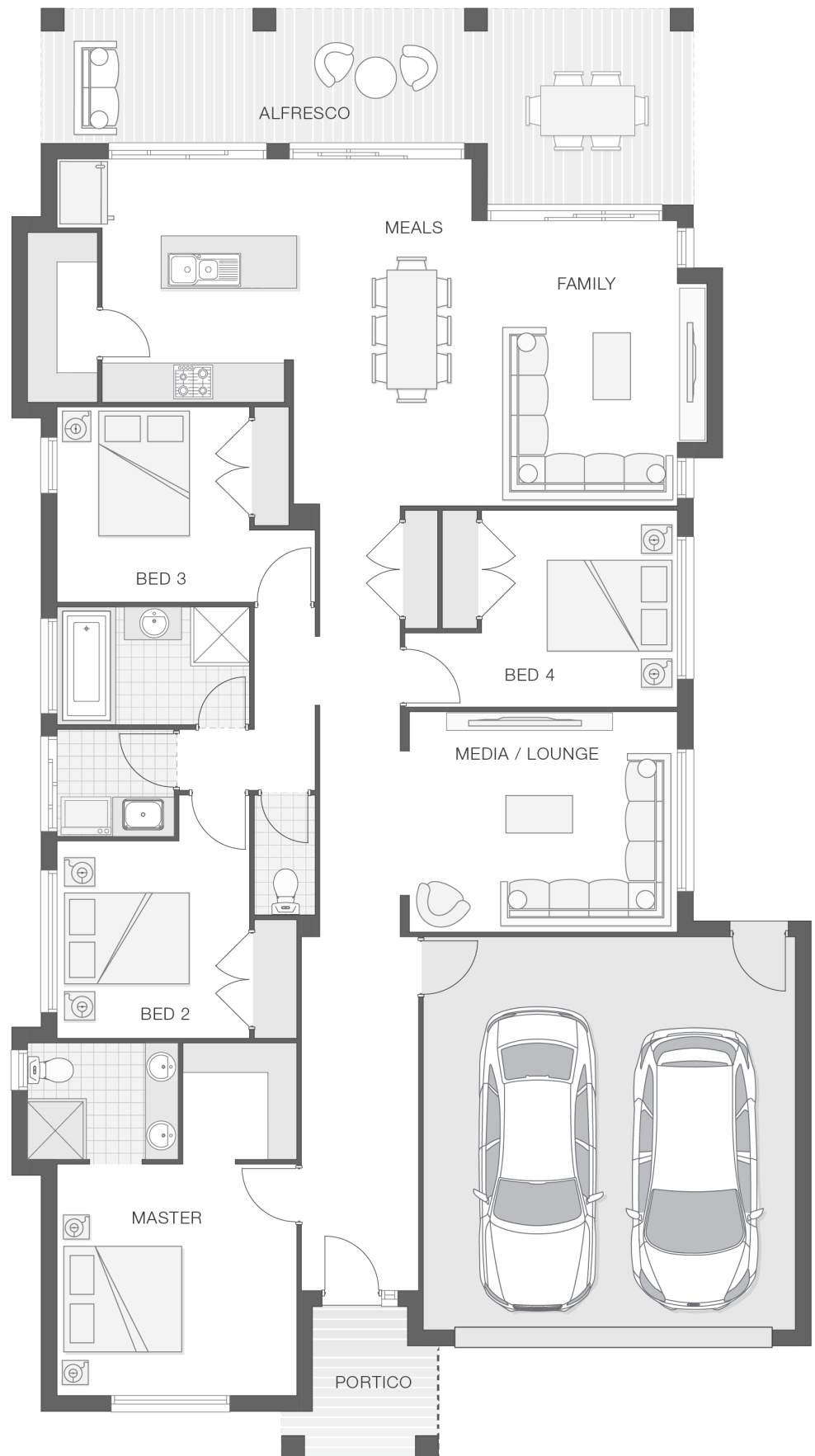
ENQUIRE NOW:

Niki Whelan • P: 0412 797 925 • E: coffs.display@adenbrook.com.au

Plans and designs depicted may change with facade selection. All drawings and photographs are for illustrative purposes only. This work is exclusively owned by AB Aust. IP Pty Ltd (ACN 163 575 077) and cannot be reproduced or copied wholly or in part, in any form without permission of AB Aust. IP Pty Ltd. Any prices in this document include GST, are subject to change without notice, relate only to the base house price and standard inclusions. Site costs will vary depending on site conditions, local Council requirements, estate guidelines and any other statutory requirements applicable. Adenbrook Homes does not have a hold on the block, this package is subject to land availability and you securing the land through the land agent directly. For more information please speak to one of our friendly New Home Consultants.

House Features:

- ✓ Carpet and Tile or Vinyl floors; modern architraves 67mm x 18mm
- ✓ Overhead cupboards to kitchen, 4 shelves to Pantry and Linen
- ✓ Wideline aluminium windows, stacker and sliding doors, and flyscreens
- ✓ Three (3) coat Haymes low toxic internal paint system
- ✓ Double lock-up garage with remotes, mailbox, and clothesline
- ✓ LED downlights throughout and NBN provision
- ✓ Guaranteed build time, fixed price and no hidden costs
- ✓ 3 included facade options and complimentary window changes
- ✓ Termite resistant "blue pine" framing and trusses and physical termite barriers
- ✓ Brick exterior, concrete tile roof, 45sqm grey concrete driveway
- ✓ Extended polished edge mirrors full wall width
- ✓ Concrete Alfresco and Portico areas



ENQUIRE NOW:

Niki Whelan • P: 0412 797 925 • E: coffs.display@adenbrook.com.au

Plans and designs depicted may change with facade selection. All drawings and photographs are for illustrative purposes only. This work is exclusively owned by AB Aust. IP Pty Ltd (ACN 163 575 077) and cannot be reproduced or copied wholly or in part, in any form without permission of AB Aust. IP Pty Ltd. Any prices in this document include GST, are subject to change without notice, relate only to the base house price and standard inclusions. Site costs will vary depending on site conditions, local Council requirements, estate guidelines and any other statutory requirements applicable. Adenbrook Homes does not have a hold on the block, this package is subject to land availability and you securing the land through the land agent directly. For more information please speak to one of our friendly New Home Consultants.