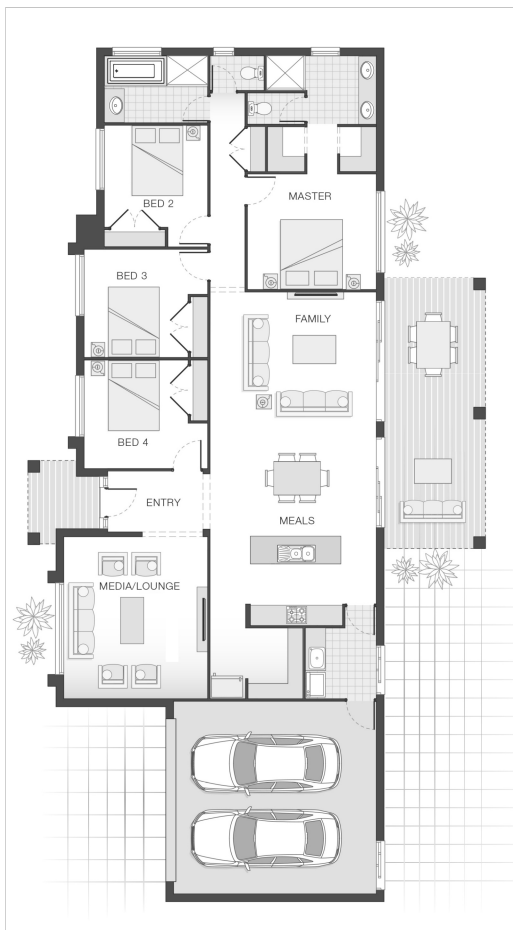




House Plan:



LOT #1003

Riverton

Address: Moonie Crescent, Jimboomba, 4280



800 m²

The Bellevue - Gold Coast

Package Price From

4

2

2

242 m²

\$520,551*

About package:

This Adenbrook Home & Land package is located in the highly sought after AV Jennings Riverton Estate in Jimboomba.

Riverton is inspired by the riverside location and set amongst a backdrop of natural beauty, yet in as little as three minutes you're in the middle of the Jimboomba township, where you will find all of life's modern conveniences.

Set on a picturesque 800 sqm. flat block of land, coupled with our stunning Bellevue home design this package exemplifies luxury living at its best.

This package comes with a vast array of features such as:

- Exposed Aggregate Concrete Driveway
- Stone Benchtops to Kitchen & Bathrooms
- Stainless Steel Westinghouse Appliances
- LED Downlights
- Internal Floor Coverings (tiles & carpet)
- Undercover Alfresco Entertaining Area
- Soft Close Doors & Drawers to Kitchen and Bathrooms
- Upgraded 1020 entry door
- Dishwasher & Built-In Microwave
- Plus much, much more!

Land is almost registered so you could start building sooner than you

ENQUIRE NOW:

Con Sgouros • P: 0404 308 208 • E: goldcoast@adenbrook.com.au

Plans and designs depicted may change with facade selection. All drawings and photographs are for illustrative purposes only. This work is exclusively owned by AB Aust. IP Pty Ltd (ACN 163 575 077) and cannot be reproduced or copied wholly or in part, in any form without permission of AB Aust. IP Pty Ltd. Any prices in this document include GST, are subject to change without notice, relate only to the base house price and standard inclusions. Site costs will vary depending on site conditions, local Council requirements, estate guidelines and any other statutory requirements applicable. Adenbrook Homes does not have a hold on the block, this package is subject to land availability and you securing the land through the land agent directly. For more information please speak to one of our friendly New Home Consultants.