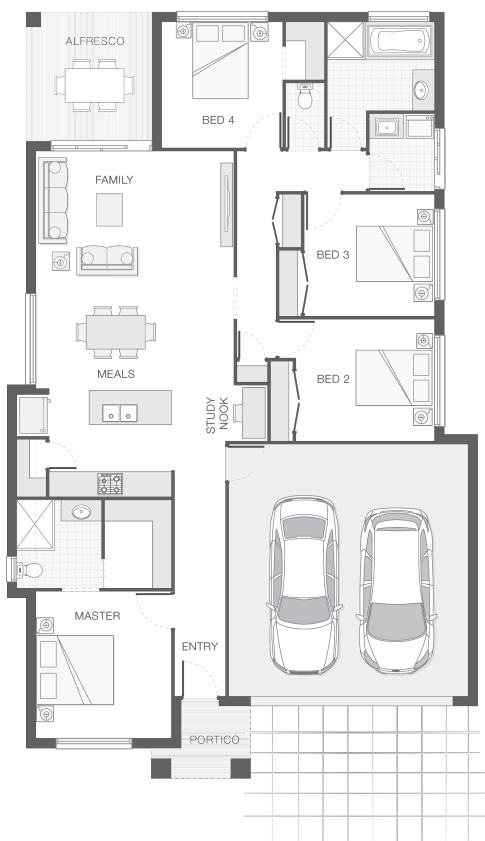




House Plan:



LOT #1032

Riverton

Address: Riverside Esplanade, Jimboomba, 4280



432 m²

The Willow - MK2 - Gold Coast

Package Price From

4 2 2 178 m²

\$388,261*

About package:

This Adenbrook Home & Land package is located in the highly sought after AV Jennings Riverton Estate in Jimboomba.

Riverton is inspired by the riverside location and set amongst a backdrop of natural beauty, yet in as little as three minutes you're in the middle of the Jimboomba township, where you will find all of life's modern conveniences.

Set on a generous 432 sqm. flat block of land, coupled with our stunning Willow Mk 2 home design this package is sure to impress.

This package comes with a vast array of features such as:

- Exposed Aggregate Concrete Driveway
- Stone Benchtops to Kitchen & Bathrooms
- Stainless Steel Westinghouse Appliances
- LED Downlights
- Internal Floor Coverings (tiles & carpet)
- Undercover Alfresco Entertaining Area
- Soft Close Doors & Drawers to Kitchen and Bathrooms
- Upgraded 1020 entry door
- Dishwasher & Built-In Microwave
- Plus much, much more!

Land is almost registered so you could start building sooner than you ever imagined.

ENQUIRE NOW:

Con Sgouros • P: 0404 308 208 • E: goldcoast@adenbrook.com.au

Images depicted on this site are for illustration purposes only. Facades and other images of homes and land estates may include optional upgrades, additional fixtures, finishes and home or estate features that are not included in the base price of the home or land package such as landscaping, feature tiling, decking, furnishing, feature lighting, pools, etc. Land estate pricing and plans are subject to developer guidelines and may vary at any time.