



House Plan:

LOT #23

Heathwood Paradise

Address: Falkland Street West, Heathwood, 4110



402 m²

The Belmore

Package Price From

5

3

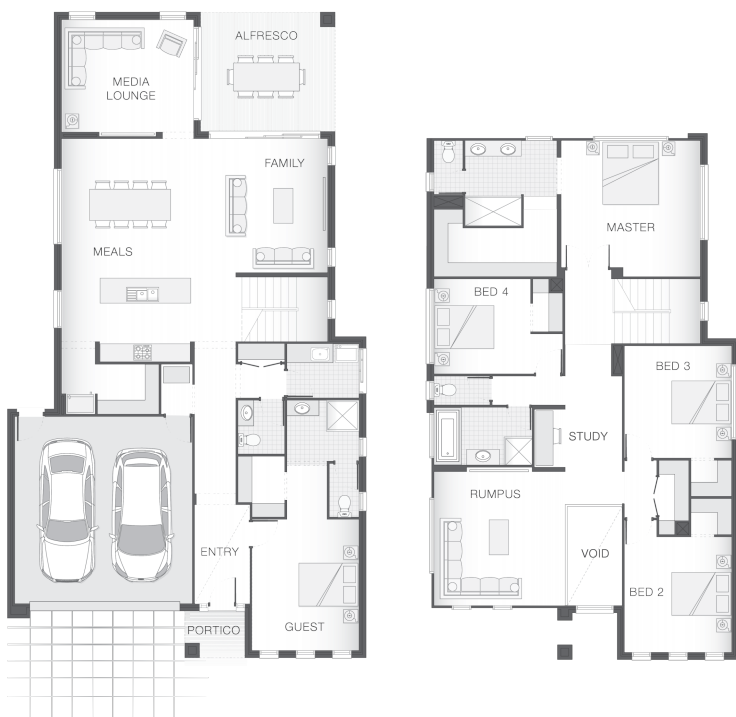
2

38 sq

\$709,276*

About package:

The Belmore home design oozes sophistication from the breathtaking double storey void upon entry to the fully equipped guest quarters and lavish master retreat. Sprawling over two levels, the Belmore perfectly balances practical living with pure indulgence. The lower level is the entertainment hub boasting large kitchen complete with butler's pantry, large dining and living space and an extra media room and alfresco area. On the upper level, the opulent master retreat is an oasis spanning the width of the home and includes a stunning ensuite with double vanity and an expansive walk-in-robe. Also on the upper level is an additional media room and another three generous bedrooms, one with a private balcony.



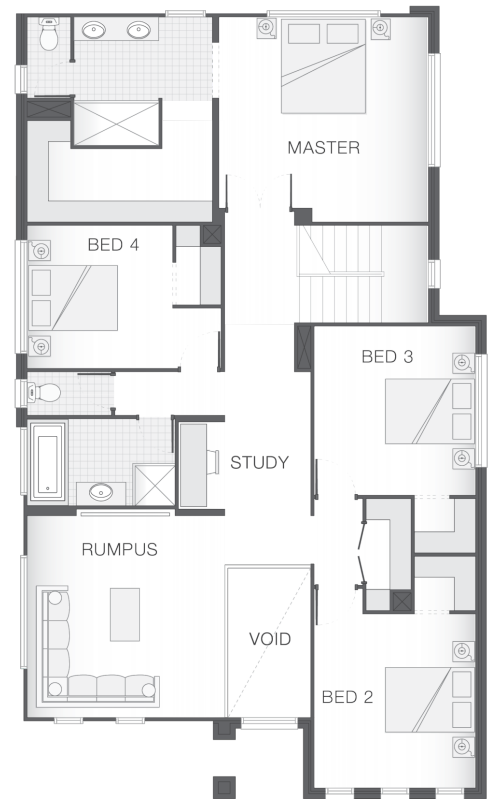
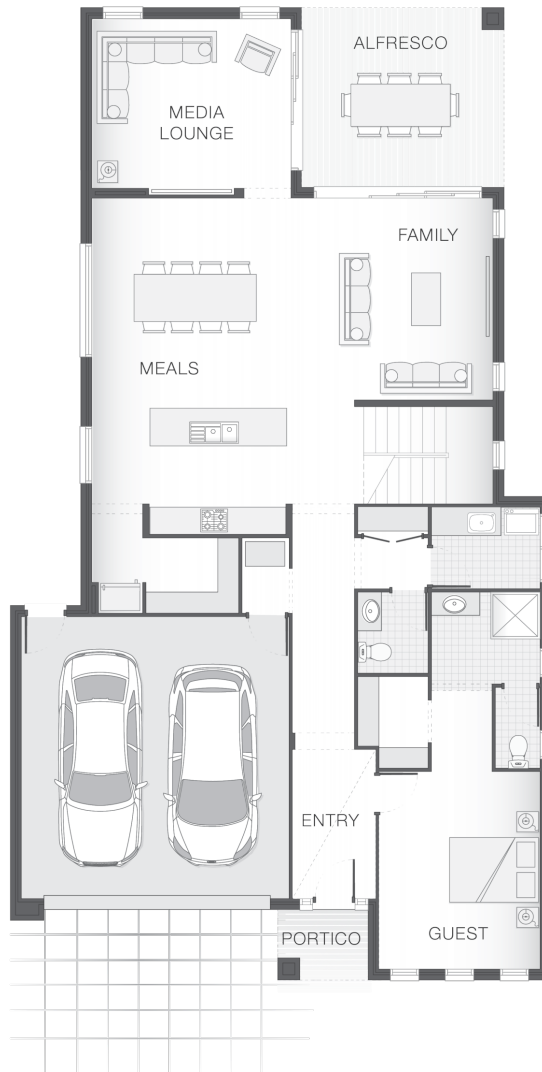
ENQUIRE NOW:

Brendan Wekeem • P: 0400 901 485 • E: brisbane.display@adenbrook.com.au

Images depicted on this site are for illustration purposes only. Facades and other images of homes and land estates may include optional upgrades, additional fixtures, finishes and home or estate features that are not included in the base price of the home or land package such as landscaping, feature tiling, decking, furnishing, feature lighting, pools, etc. Land estate pricing and plans are subject to developer guidelines and may vary at any time.

House Features:

- ✓ Tiling and carpet throughout
- ✓ Exposed aggregate driveway and path
- ✓ Tiling and integral slab to alfresco
- ✓ 1020mm entry door
- ✓ Monier Atura Low-profile roof tiles or Colorbond roof
- ✓ 2590mm ceiling height to lower level
- ✓ Flyscreens to windows
- ✓ LED downlights
- ✓ Cold water tap to fridge space
- ✓ 20mm stone benchtops to kitchen, ensuite and bathrooms
- ✓ Westinghouse stainless steel dishwasher
- ✓ Externally ducted rangehood
- ✓ Soft-close drawers to kitchen, ensuite and bathrooms
- ✓ Shower niche to ensuite & bathroom
- ✓ Difficult Access
- ✓ Temporary Fencing
- ✓ Render to entire house



ENQUIRE NOW:

Brendan Wekeem • P: 0400 901 485 • E: brisbane.display@adenbrook.com.au

Images depicted on this site are for illustration purposes only. Facades and other images of homes and land estates may include optional upgrades, additional fixtures, finishes and home or estate features that are not included in the base price of the home or land package such as landscaping, feature tiling, decking, furnishing, feature lighting, pools, etc. Land estate pricing and plans are subject to developer guidelines and may vary at any time.