

The Capestone

4 2 2 26 sq

Facade name: Chadstone

House Plan:

LOT #234

Hilltop Park

Address: Bradman Drive, Woongarah, 2259



411 m²

House and land package price:

From **\$708,262***

About package:

The Capestone home design is the perfect balance between entertaining and relaxation. The lower level offers multiple entertainment zones including an alfresco and indoor dining area, and a separate media room. The upper level features the master retreat with ensuite and walk-inrobe creating a private sanctuary away from the main living area of the home. Also on the upper floor are the other bedrooms and children's retreat, ensuring there is room for the entire family.



ENQUIRE NOW:

Paul James • P: 0418 656 366 • E: hawkesbury.bluemountains@adenbrook.com.au

Images depicted on this site are for illustration purposes only. Facades and other images of homes and land estates may include optional upgrades, additional fixtures, finishes and home or estate features that are not included in the base price of the home or land package such as landscaping, feature tiling, decking, furnishing, feature lighting, pools, etc. Land estate pricing and plans are subject to developer guidelines and may vary at any time.

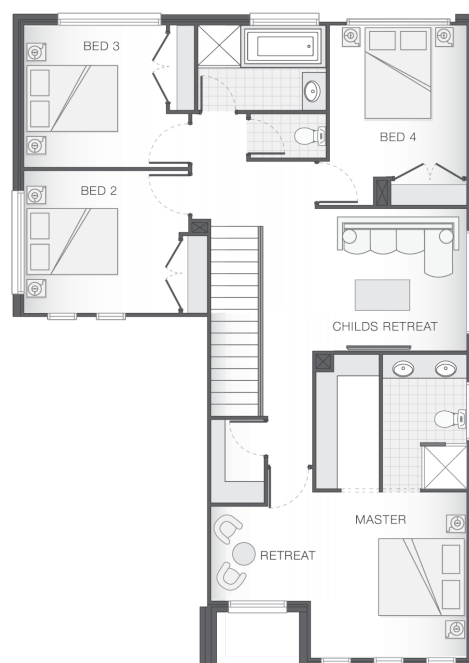
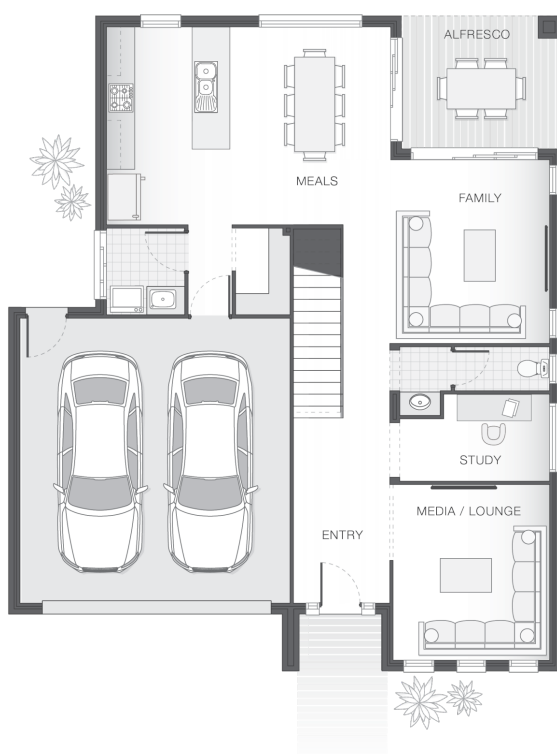
Powered by iBuildNew

adenbrook
homes

REF: IADENHL484421

House Features:

- ✓ Ultimate Bundle
- ✓ Solar Power
- ✓ Colourbond Roof
- ✓ 2 Split System Air Conditioning
- ✓ Double GPO's Throughout
- ✓ Floor Coverings
- ✓ Stone Benchtops to Kitchen and Bathrooms*
- ✓ Stainless Steel Appliances
- ✓ 2590mm High Ceilings
- ✓ Basix
- ✓ All connections & services



ENQUIRE NOW:

Paul James • P: 0418 656 366 • E: hawkesbury.bluemountains@adenbrook.com.au

Images depicted on this site are for illustration purposes only. Facades and other images of homes and land estates may include optional upgrades, additional fixtures, finishes and home or estate features that are not included in the base price of the home or land package such as landscaping, feature tiling, decking, furnishing, feature lighting, pools, etc. Land estate pricing and plans are subject to developer guidelines and may vary at any time.