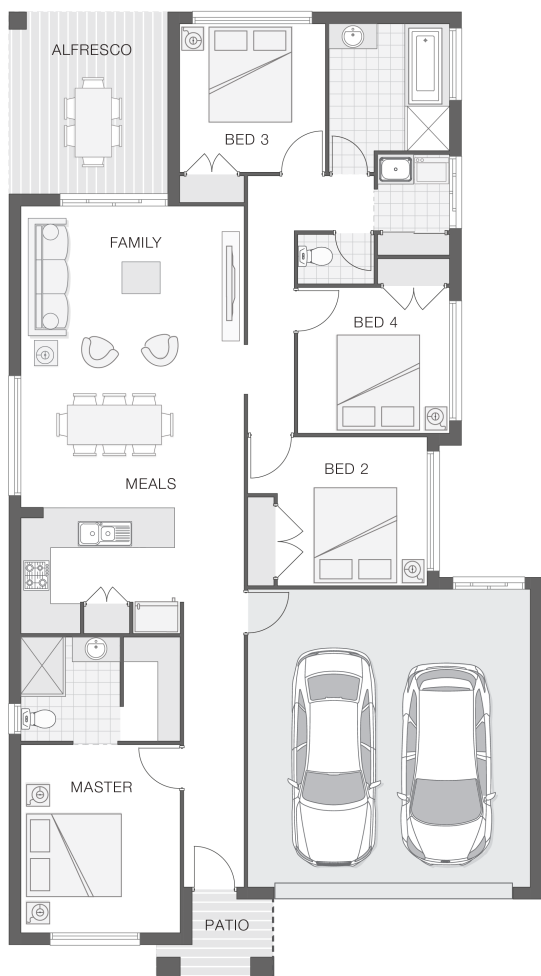


The Willow - A

4 2 2 19 sq

Facade name: Bexley

House Plan:



LOT #398

The Hills

Address: Chadwick Street, Maraylya, 2765



500 m²

House and land package price:

From **\$792,479***

About package:

The Willow home design is popular and practical for the modern family that loves to entertain and enjoy each other's company.

The light and bright open plan design provides a great entertaining space within the hub of the home that incorporates the alfresco area, the kitchen and family room and meals zones.

The generous master retreat enjoys an ensuite and walk-inrobe. The children's wing provides great separation and is ideal for creating a safe and secure area for the kids.

ENQUIRE NOW:

Paul James • P: 0418 656 366 • E: hawkesbury.bluemountains@adenbrook.com.au

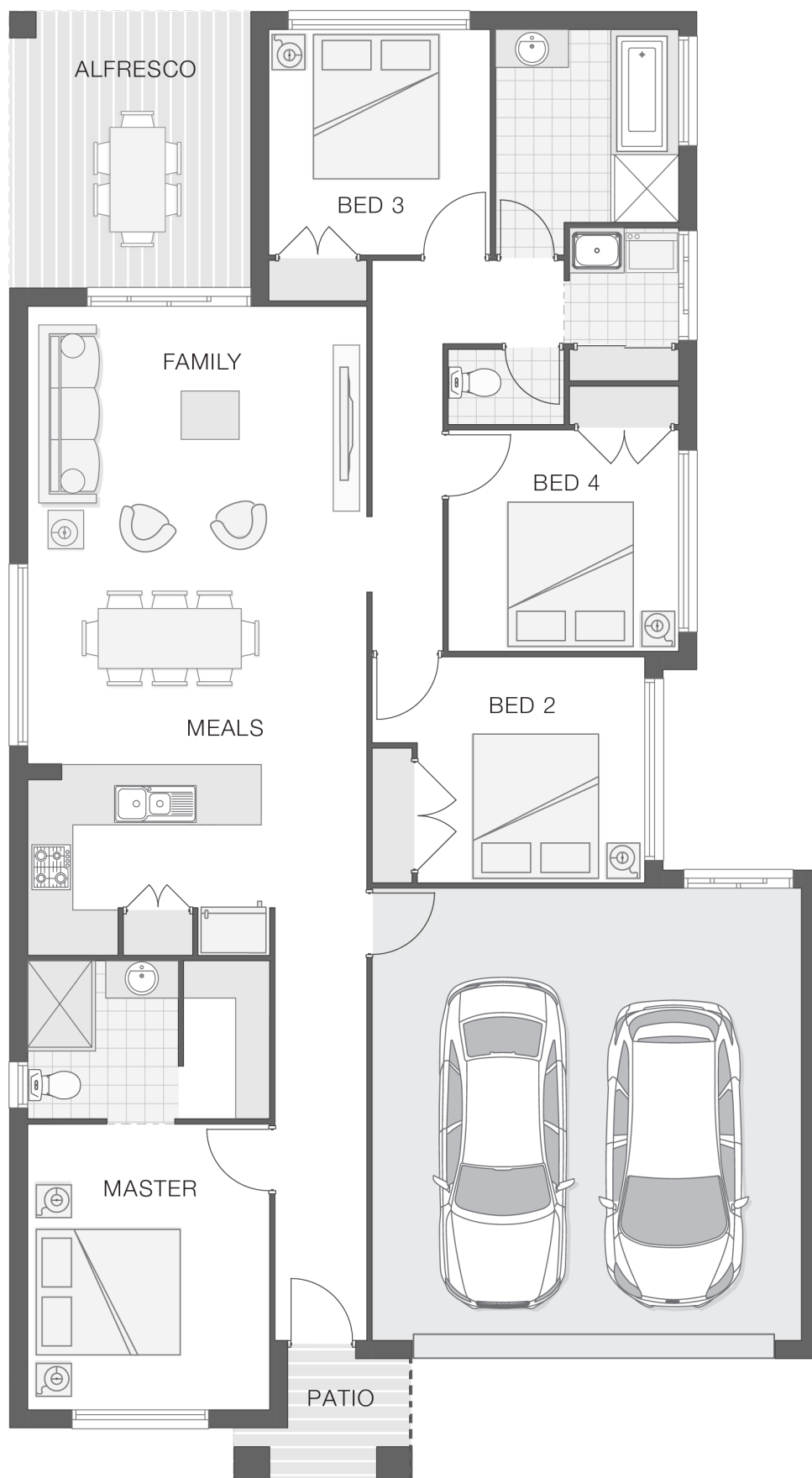
Images depicted on this site are for illustration purposes only. Facades and other images of homes and land estates may include optional upgrades, additional fixtures, finishes and home or estate features that are not included in the base price of the home or land package such as landscaping, feature tiling, decking, furnishing, feature lighting, pools, etc. Land estate pricing and plans are subject to developer guidelines and may vary at any time.

House Features:

- ✓ Ultimate Bundle
- ✓ Solar Power
- ✓ Colourbond Roof
- ✓ 2 Split System Air Conditioning
- ✓ Double GPO's Throughout
- ✓ Floor Coverings
- ✓ Stone Benchtops to Kitchen and Bathrooms*
- ✓ Stainless Steel Appliances
- ✓ 2590mm High Ceilings
- ✓ Basix
- ✓ All connections & services
- ✓ 1020mm wide Feature Front Entry Door
- ✓ Flyscreens
- ✓ Termite Barrier Protection
- ✓ Shower Niches to Ensuite & Bathroom
- ✓ LED Downlights
- ✓ Covered Concrete & Tiled Alfresco area
- ✓ Soft Close Drawers & Doors
- ✓ Ducted Air Conditioning
- ✓ 3 Phase Underground Power

Estate Features:

- ✓ Presenting the best value land in the Hills and superb opportunity to live in a beautiful master planned community.
- ✓ Wide range of frontages (13.6m's, 15m's, and 16m's) some a little wider
- ✓ Land from 450msq to 555msq
- ✓ Easy building near level blocks
- ✓ Located in a quiet estate offering parks and lake
- ✓ Desirable Hills shire locality, short drive to access M2/M7 Sydney Metro station at Rouse Hill only 5 mins away.
- ✓ • Primary • Secondary • Child care
- ✓ Maraylya Public School Primary Government 3.33km
- ✓ Oakville Public School Primary Government 4.06km
- ✓ Longneck Lagoon Environmental Education Centre Combined Government 4.53km
- ✓ Arndell College Combined Government 4.53km



ENQUIRE NOW:

Paul James • P: 0418 656 366 • E: hawkesbury.bluemountains@adenbrook.com.au

Images depicted on this site are for illustration purposes only. Facades and other images of homes and land estates may include optional upgrades, additional fixtures, finishes and home or estate features that are not included in the base price of the home or land package such as landscaping, feature tiling, decking, furnishing, feature lighting, pools, etc. Land estate pricing and plans are subject to developer guidelines and may vary at any time.