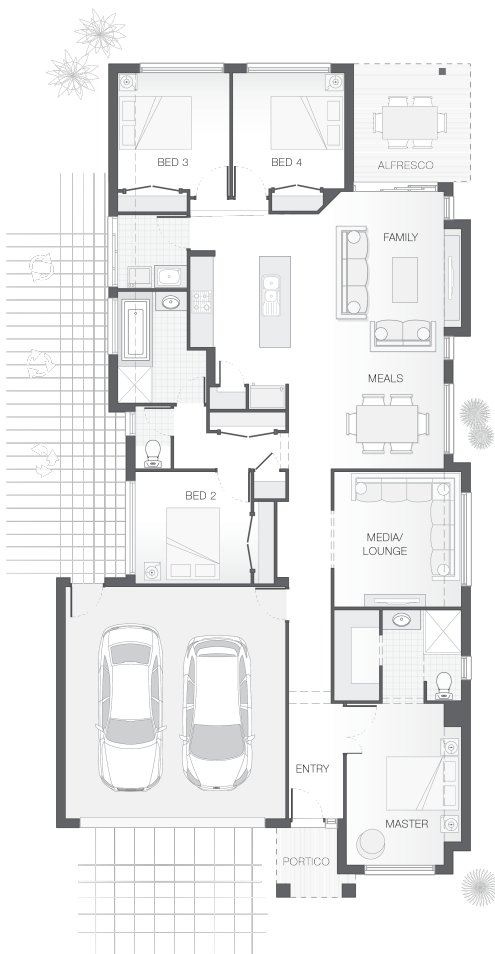


The Saxon - Turn Key Price

4 2 2 21 sq

Facade name: Attley

House plan:



LOT #6

Gibraltar View Estate

Address: Gibraltar View Estate, Junction Hill, Grafton,
2460



720 m²

House and land package price:

From **\$446,880***

Ultimate Bundle of Home Upgrades

The Ultimate Bundle of Home Upgrades to define your new home... you'll be surprised at what is include

Available until: 31/12/2020

About package:

This home package is based on our Saxon design on a lovely block in Gibraltar in Junction Hill, Grafton.

- All Council Fees and Approvals with M Class Soil
- Full sarking wrap to treated timber frames and roof
- Insulation to walls and ceiling, flyscreens
- Carpet / tiles or vinyl flooring
- Recessed wet areas
- Westinghouse appliances
- Alfresco with recessed stacking sliding doors
- Drop in laundry tub with cabinet and clothesline
- Full electrical layout with downlights and feature lighting and TV aerial
- Water tank, mailbox and concrete driveway

Our Ultimate Bundle Promotion is Available Now included at No Cost;

ENQUIRE NOW:

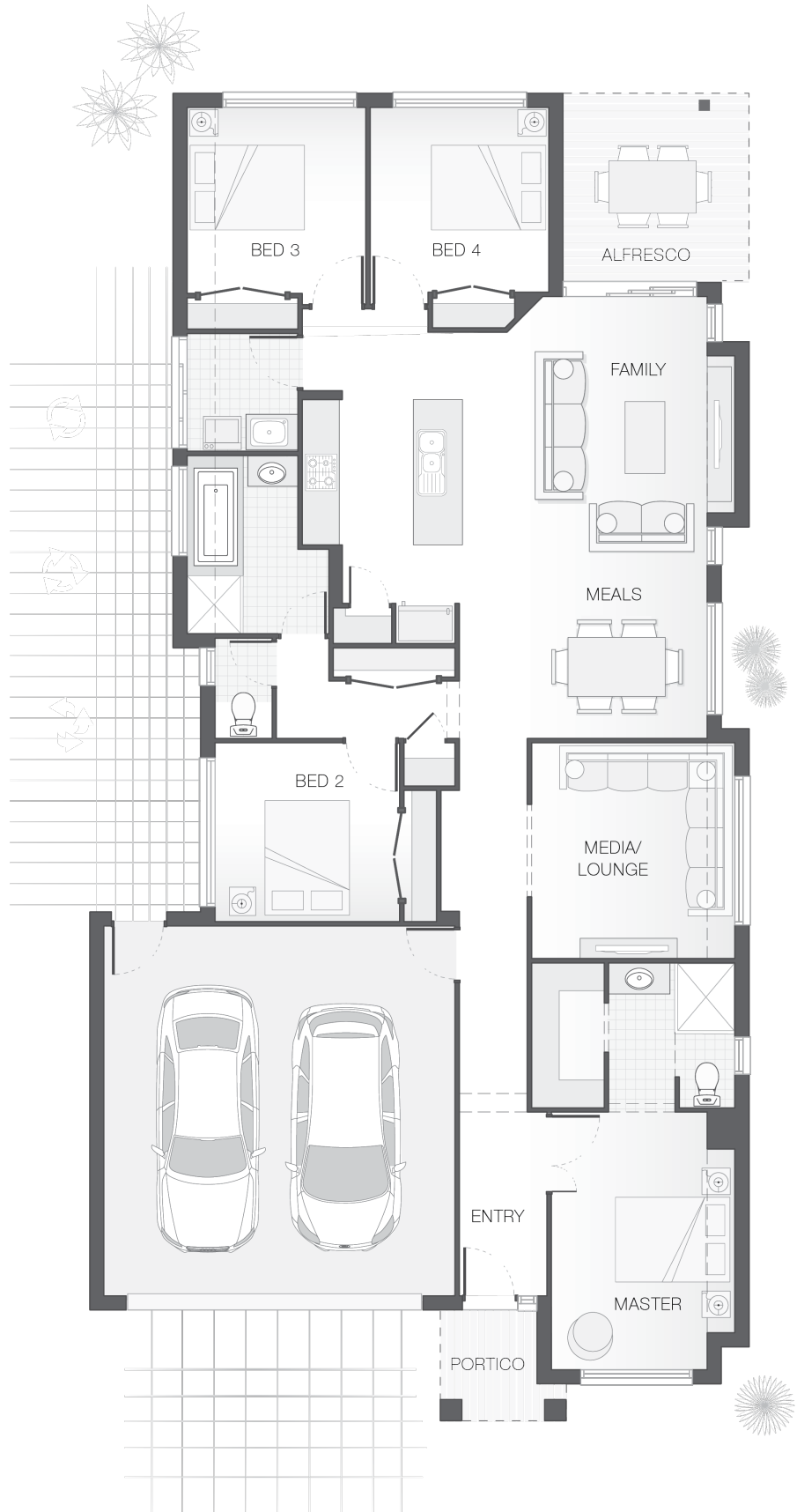
Niki Whelan • P: 0412 797 925 • E: coffs.display@adenbrook.com.au

House Features:

- ✓ Carpet and Tile or Vinyl floors; modern architraves 67mm x
- ✓ Three (3) coat Haymes low toxic internal paint system
- ✓ Double lock-up garage with remotes, mailbox, and
- ✓ Wideline aluminium windows, stacker and sliding doors, and
- ✓ Overhead cupboards to kitchen, 4 shelves to Pantry
- ✓ LED downlights throughout and NBN provision
- ✓ 3 included facade options and complimentary window
- ✓ Termite resistant "blue pine" framing and trusses and
- ✓ Guaranteed build time, fixed price and no hidden costs
- ✓ Brick exterior, concrete tile roof, 45sqm grey concrete
- ✓ Extended polished edge mirrors full wall width
- ✓ Concrete Alfresco and Portico areas

Estate Features:

- ✓ St Patrick's Primary School
- ✓ Nambucca Plaza
- ✓ Macksville Station



ENQUIRE NOW:

Niki Whelan • P: 0412 797 925 • E: coffs.display@adenbrook.com.au