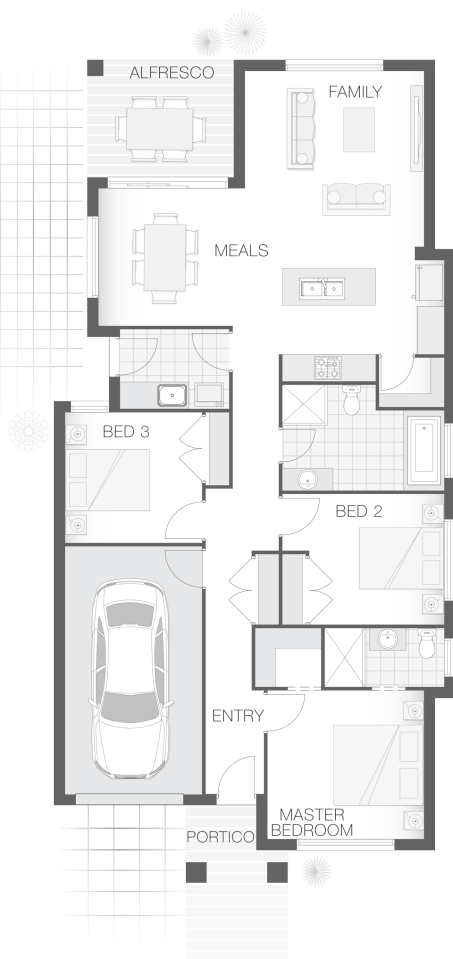


The Destiny

3 2 1 16 sq

Facade name: Byron

House Plan:



LOT #169

Bingara Gorge

Address: TBA, Wilton (NSW), 2571



250 m²

House and land package price:

From **\$530,900***

About package:

This Adenbrook Home & Land package is located in the highly sought-after estate of Bingara Gorge. Set on a 250m² block of land, we have coupled it with our Destiny design.

The Destiny home design is contemporary and petite yet cleverly designed to accommodate a small lot and deliver on space with a layout that is ideal for the growing family.

The master retreat occupies the front of the home, providing great separation from the additional bedrooms and main living space.

The slim design ensures its suitability for the smaller, more compact lot yet does not compromise on comfort and functionality including a great entertaining space and alfresco dining area.

This House and Land Package includes:-

- * Site Specific site Costs and Developer Compliance
- * Builders range laminate & carpet throughout home
- * Tiling to the Alfresco and Portico
- * Coloured Concrete Driveway
- * Split System Air Conditioning
- * Caroma Bathroom Accessories
- * PLUS our fantastic Ultimate Upgrade Bundle!
- Our ULTIMATE BUNDLE PACKAGE has fantastic inclusions of
- * Monier Atura Low Profile Roof Tiles
- * 1020mm Entry Door

ENQUIRE NOW:

Matthew Micallef • P: 0406 248 064 • E: greaterwollongong@adenbrook.com.au

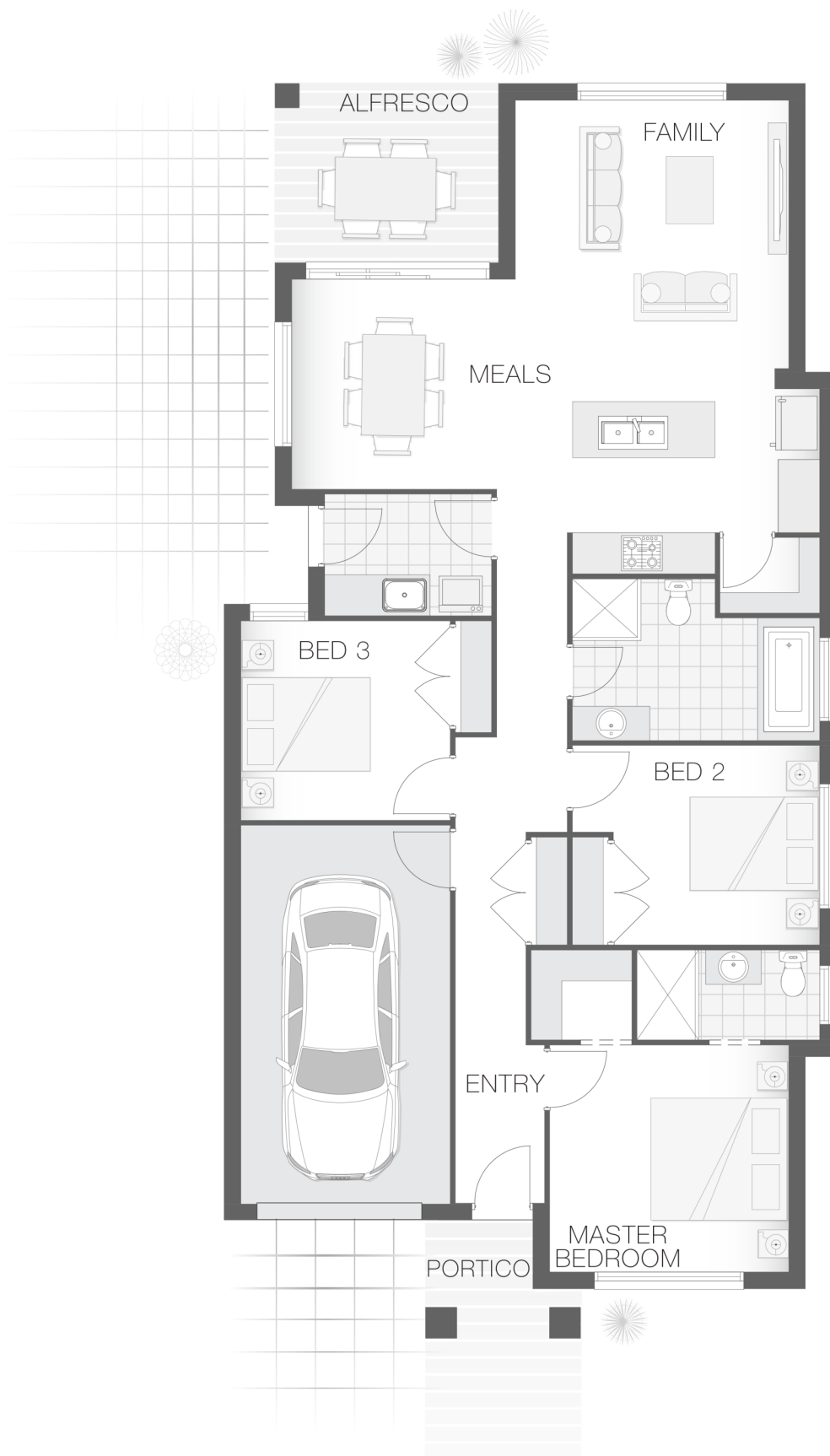
Plans and designs depicted may change with facade selection. All drawings and photographs are for illustrative purposes only. This work is exclusively owned by AB Aust. IP Pty Ltd (ACN 163 575 077) and cannot be reproduced or copied wholly or in part, in any form without permission of AB Aust. IP Pty Ltd. Any prices in this document include GST, are subject to change without notice, relate only to the base house price and standard inclusions. Site costs will vary depending on site conditions, local Council requirements, estate guidelines and any other statutory requirements applicable. Adenbrook Homes does not have a hold on the block, this package is subject to land availability and you securing the land through the land agent directly. For more information please speak to one of our friendly New Home Consultants.

House Features:

- ✓ Tiling to the Alfresco and Portico
- ✓ 1020mm Entry Door
- ✓ Clipsal Iconic Ultramodern range Switch Gear
- ✓ Standard Site Costs and Standard Basix Requirements
- ✓ Coloured Concrete Driveway
- ✓ 20mm Stone benchtop to the kitchen, bathroom and Ensuite.
- ✓ 2x Gas Points
- ✓ R2 Walls and R4 Ceiling Insulation
- ✓ Soft-close drawers and doors to Kitchen and Bathrooms
- ✓ Westinghouse Cooktop, Oven and Dishwasher
- ✓ Shower Niches
- ✓ Monier Atura low-profile roof tiles
- ✓ Flyscreens To all openable windows
- ✓ Much More...

Estate Features:

- ✓ Bingara Gorge Golf Club
- ✓ Pulse Leisure Centre
- ✓ Bingara Gorge Community Preschool



ENQUIRE NOW:

Matthew Micallef • P: 0406 248 064 • E: greaterwollongong@adenbrook.com.au

Plans and designs depicted may change with facade selection. All drawings and photographs are for illustrative purposes only. This work is exclusively owned by AB Aust. IP Pty Ltd (ACN 163 575 077) and cannot be reproduced or copied wholly or in part, in any form without permission of AB Aust. IP Pty Ltd. Any prices in this document include GST, are subject to change without notice, relate only to the base house price and standard inclusions. Site costs will vary depending on site conditions, local Council requirements, estate guidelines and any other statutory requirements applicable. Adenbrook Homes does not have a hold on the block, this package is subject to land availability and you securing the land through the land agent directly. For more information please speak to one of our friendly New Home Consultants.