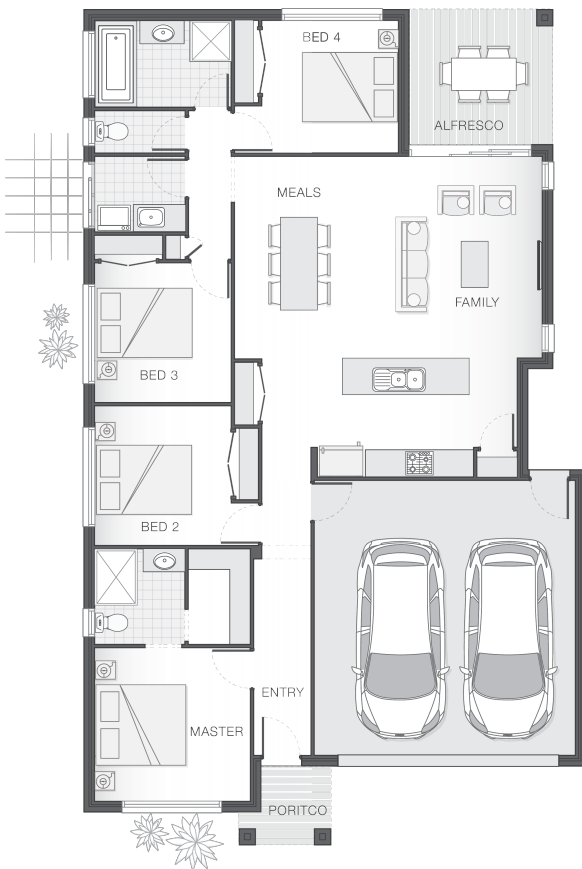


# The Catarina - Gold Coast

4 2 2 19 sq

Facade name: Bexley

## House plan:



### LOT #362

Yarrabilba

Address: Welford Circuit, Yarrabilba, 4207



480 m<sup>2</sup>

House and land package price:

From **\$397,049\***

### Ultimate Bundle

The Ultimate Bundle of inclusions for just \$4,999!\*  
You'll be surprised at what is included.

Available until: 31/12/2020

### About package:

This Adenbrook Home & Land package is located in the ever popular Yarrabilba.

Surrounded by Plunkett Conservation Reserve and on the doorstep of Mt Tamborine, Yarrabilba is perfectly positioned between Brisbane's CBD and the Gold Coast.

A vibrant and connected community ready for you to start enjoying today with shops, schools, parks, community facilities and has so much more to come; just around the corner.

Set on an ideal 480 sqm. block of land, coupled with our remarkable Catarina home design this package screams of value.

This package comes with a vast array of features such as:

- Exposed Aggregate Concrete Driveway
- Stone Benchtops to Kitchen & Bathrooms
- Stainless Steel Westinghouse Appliances
- LED Downlights
- Internal Floor Coverings (tiles & carpet)

## ENQUIRE NOW:

Con Sgouros • P: 0404 308 208 • E: goldcoast@adenbrook.com.au

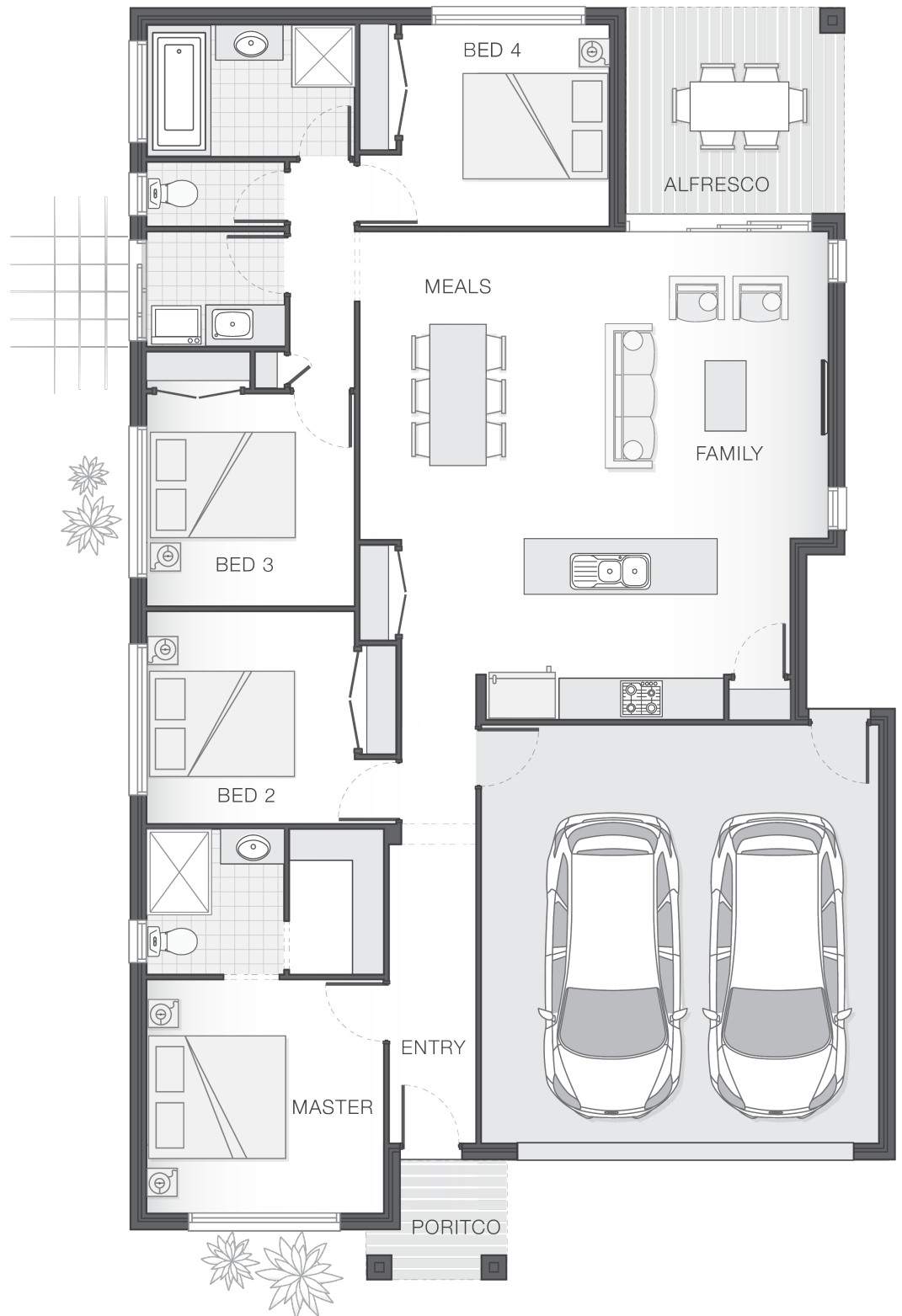
Images depicted on this site are for illustration purposes online. Facades and other images of homes and land estates may include optional upgrades, additional fixtures, finishes and home or estate features that are not included in the base prices of the home or land package such as landscaping, feature tiling, decking, furniture, feature lighting, pools, etc. Land estate pricing and plans are subject to developer guidelines and may vary at any time.

### House Features:

- ✓ Stone Benchtops to Kitchen
- ✓ Stone Benchtops to Bathroom & Ensuite
- ✓ 2590mm Ceiling Height
- ✓ Class "M" Reinforced Concrete Slab
- ✓ 500mm of fall over building platform.
- ✓ Garage door with AUTOMATIC operation
- ✓ Caroma basins & Tapware to Kitchen & Bathrooms
- ✓ Corinthian Doors with Gainsborough Locks &
- ✓ Laminate cabinet with drop-in Radiant Stainless steel trough
- ✓ Rheem 24 Litre Gas Instantaneous Hot Water
- ✓ Three coats applied to the walls and two applied to the
- ✓ Westinghouse Ducted Rangehood
- ✓ Semi-Frameless Shower Screens
- ✓ Ultimate Bundle of Home Upgrades Promotion
- ✓ Exposed Aggregate Concrete Driveway
- ✓ NBN Ready
- ✓ Westinghouse Stainless Steel Dishwasher
- ✓ LED Downlights
- ✓ Westinghouse Built In Microwave & Trim Kit
- ✓ Externally Ducted Rangehood
- ✓ Flyscreens to Openable Windows
- ✓ 600mm Westinghouse Gas Cooktop & Electric Oven
- ✓ Standard Builders Range Carpet to Bedrooms
- ✓ Concrete Alfresco Slab
- ✓ Standard Builders Range Tiles to Family, Meals & Kitchen

### Estate Features:

- ✓ Darlington Parklands
- ✓ St Clare's Catholic Primary School
- ✓ Yarrabilba Village
- ✓ Coles Supermarket
- ✓ Buxton Parklands
- ✓ Yarrabilba State School
- ✓ Shaw Street Oval



### ENQUIRE NOW:

Con Sgouros • P: 0404 308 208 • E: [goldcoast@adenbrook.com.au](mailto:goldcoast@adenbrook.com.au)