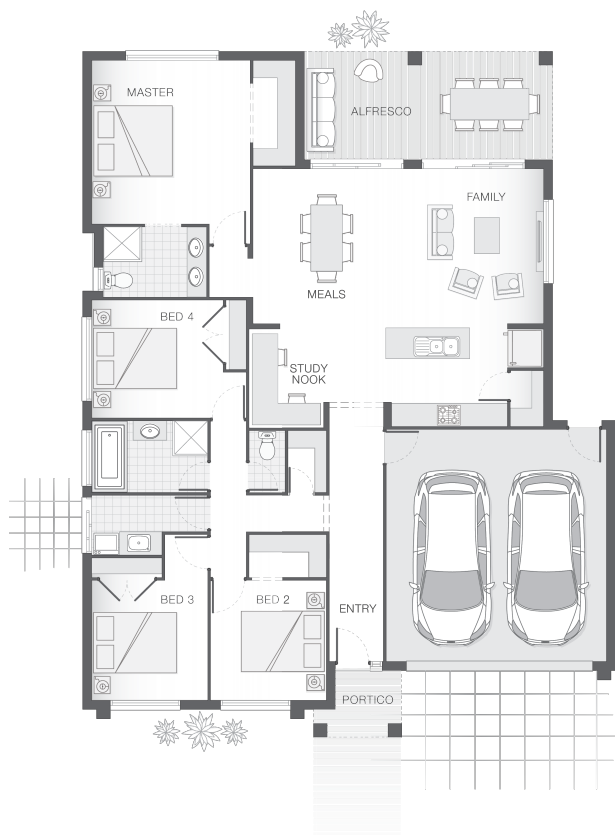




House Plan:



**LOT #485**

Yarrabilba

Address: Mudlo Street, Yarrabilba, 4207



**412 m<sup>2</sup>**

**The Chelsea - Gold Coast**

Package Price From

4

2

2

214 m<sup>2</sup>

**\$418,519\***

**About package:**

This Adenbrook Home & Land package is located in the ever popular Yarrabilba Estate.

Surrounded by Plunkett Conservation Reserve and on the doorstep of Mt Tamborine, Yarrabilba is perfectly positioned between Brisbane's CBD and the Gold Coast.

A vibrant and connected community ready for you to start enjoying today with shops, schools, parks, community facilities and has so much more to come; just around the corner.

Set on an ideal 413 sqm. block of land, coupled with our remarkable Chelsea home design this package represents great value.

This package comes with a vast array of features such as:

- Exposed Aggregate Concrete Driveway
- Stone Benchtops to Kitchen & Bathrooms
- Stainless Steel Westinghouse Appliances
- LED Downlights
- Internal Floor Coverings (tiles & carpet)
- Undercover Alfresco Entertaining Area
- Soft Close Doors & Drawers to Kitchen and Bathrooms
- Upgraded 1020 entry door
- Dishwasher & Built-In Microwave
- Plus much, much more!

Land is already registered so you could start building sooner than you

**ENQUIRE NOW:**

Con Sgouros • P: 0404 308 208 • E: [goldcoast@adenbrook.com.au](mailto:goldcoast@adenbrook.com.au)

Images depicted on this site are for illustration purposes only. Facades and other images of homes and land estates may include optional upgrades, additional fixtures, finishes and home or estate features that are not included in the base price of the home or land package such as landscaping, feature tiling, decking, furnishing, feature lighting, pools, etc. Land estate pricing and plans are subject to developer guidelines and may vary at any time.