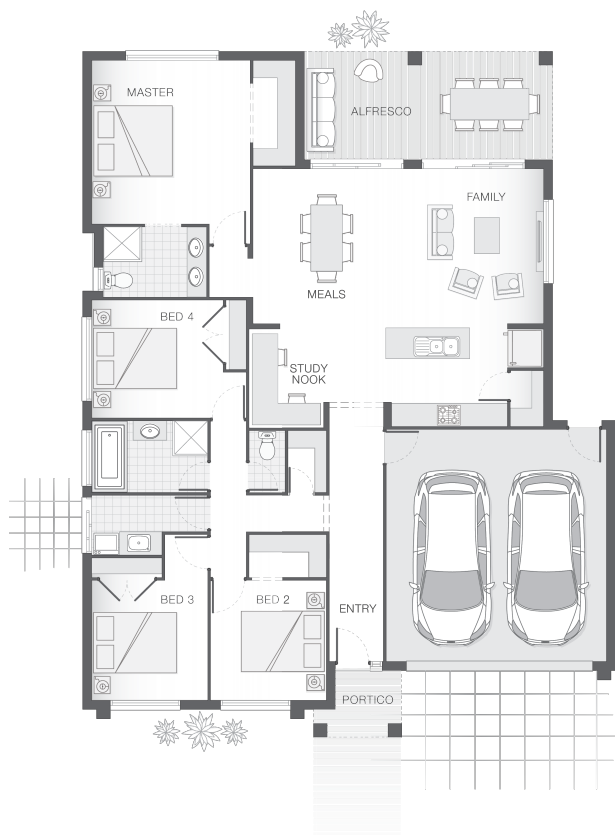




House Plan:



LOT #1667

Gainsborough Greens

Address: Kosciuszko Circuit, Pimpama, 4209



460 m²

The Chelsea - Gold Coast

Package Price From

4

2

2

214 m²

\$530,019*

About package:

This Adenbrook Home & Land package is located in the highly sought after Gainsborough Greens Estate in Pimpama.

Taking cues from its Pimpama home, Gainsborough Greens focuses on preserving its lush green surrounds, with over 65% dedicated to green open spaces, and forging strong community ties. A strong community program turns neighbours into friendly faces, with a sense of belonging and peace of mind for residents.

Set on a generous 460 sqm. block of land, coupled with our modern, open plan Chelsea design and Hampton's inspired Haven facade this package is sure to tick all the right boxes.

This package comes with a vast array of features such as:

- Exposed Aggregate Concrete Driveway
- Stone Benchtops to Kitchen & Bathrooms
- Stainless Steel Westinghouse Appliances
- LED Downlights
- Internal Floor Coverings (tiles & carpet)
- Undercover Alfresco Entertaining Area
- Soft Close Doors & Drawers to Kitchen and Bathrooms
- Dishwasher & Built-In Microwave
- Plus much, much more!

Land is registering soon so you could start building sooner than you ever

ENQUIRE NOW:

Con Sgouros • P: 0404 308 208 • E: goldcoast@adenbrook.com.au

Images depicted on this site are for illustration purposes only. Facades and other images of homes and land estates may include optional upgrades, additional fixtures, finishes and home or estate features that are not included in the base price of the home or land package such as landscaping, feature tiling, decking, furnishing, feature lighting, pools, etc. Land estate pricing and plans are subject to developer guidelines and may vary at any time.