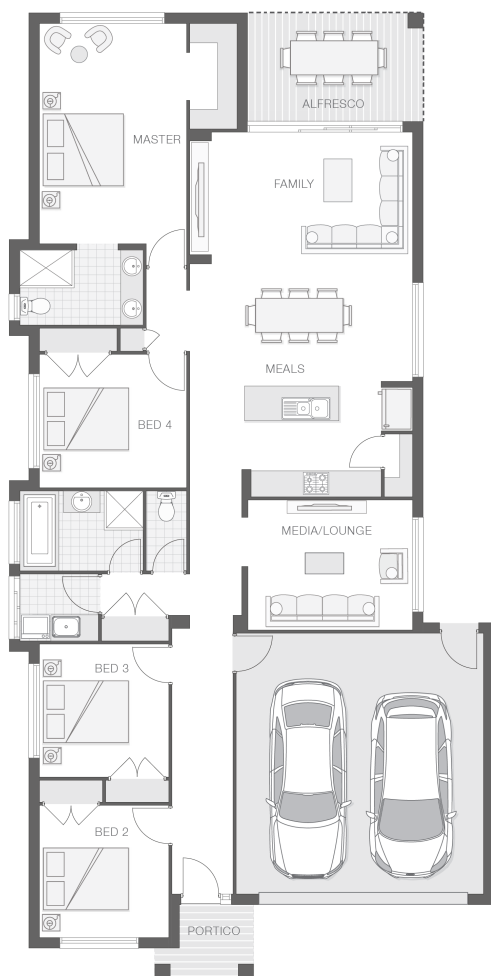


The Keppel

4 2 2 22 sq

Facade name: Byron

House Plan:



LOT #LOT 4218

New Park

Address: Marsdenia Ave, Marsden Park, 2765



375 m²

House and land package price:

From **\$774,900***

About package:

This Adenbrook Home & Land package is located in the highly sought after Marsden Park. Set on a 375m² block of land, we have coupled it with our Keppel home design. With 4 bedrooms, great open-planned living space, and lots of storage space, you don't want to miss out on this one! The open plan living with integrated alfresco encourages a relaxed, casual lifestyle for living and entertaining. Land is registered and ready for construction.

This House and Land Package includes:-

- * Standard Site Costs and Standard Basix Requirements
- * Builders range tiles & carpet throughout home
- * Tiling to the Alfresco and Portico
- * Coloured Concrete Driveway
- * Daiken Reverse Cycle Ducted Air Con.
- * Caroma Bathroom Accessories
- * PLUS our fantastic Ultimate Upgrade Bundle!
- Our ULTIMATE BUNDLE PACKAGE has fantastic inclusions of
- * Monier Atura Low Profile Roof Tiles
- * 1020mm Entry Door
- * 20mm Stone benchtop to the kitchen, bathroom and Ensuite.
- * Westinghouse Dishwasher and Microwave, just to name a few

Don't miss out, enquire today to make this your dream home.

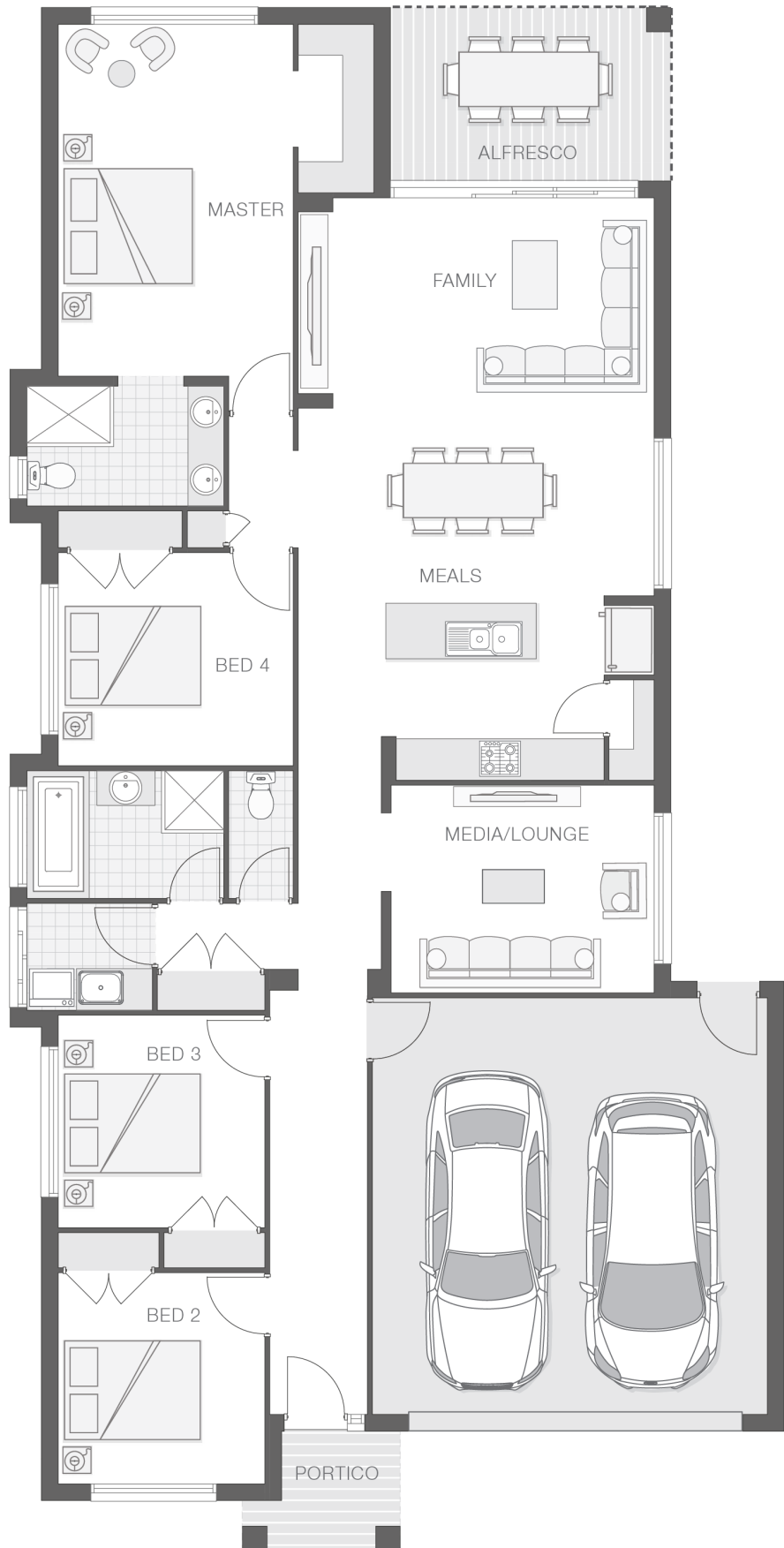
ENQUIRE NOW:

Matthew Micallef • P: 0406 248 064 • E: sydneywest.southwest@adenbrook.com.au

Images depicted on this site are for illustration purposes only. Facades and other images of homes and land estates may include optional upgrades, additional fixtures, finishes and home or estate features that are not included in the base price of the home or land package such as landscaping, feature tiling, decking, furnishing, feature lighting, pools, etc. Land estate pricing and plans are subject to developer guidelines and may vary at any time.

House Features:

- ✓ Standard Site Costs and Standard Basix Requirements
- ✓ Builders range tiles & carpet throughout home
- ✓ Tiling to the Alfresco and Portico
- ✓ Coloured Concrete Driveway
- ✓ Daiken Reverse Cycle Ducted Air Conditioning
- ✓ 1020mm Entry Door
- ✓ 20mm Stone benchtop to the kitchen, bathroom and Ensuite.
- ✓ Westinghouse Cooktop, Oven and Dishwasher
- ✓ Shower Niches
- ✓ 2x Gas Points
- ✓ Monier Atura low-profile roof tiles
- ✓ R2 Walls and R4 Ceiling Insulation
- ✓ Flyscreens To all openable windows
- ✓ Clipsal Iconic Ultramodern range Switch Gear
- ✓ Soft-close drawers and doors to Kitchen and Bathrooms
- ✓ Much More...
- ✓ 2590mm Ceiling Upgrade to the Ground Floor Only



ENQUIRE NOW:

Matthew Micallef • P: 0406 248 064 • E: sydneywest.southwest@adenbrook.com.au

Images depicted on this site are for illustration purposes only. Facades and other images of homes and land estates may include optional upgrades, additional fixtures, finishes and home or estate features that are not included in the base price of the home or land package such as landscaping, feature tiling, decking, furnishing, feature lighting, pools, etc. Land estate pricing and plans are subject to developer guidelines and may vary at any time.