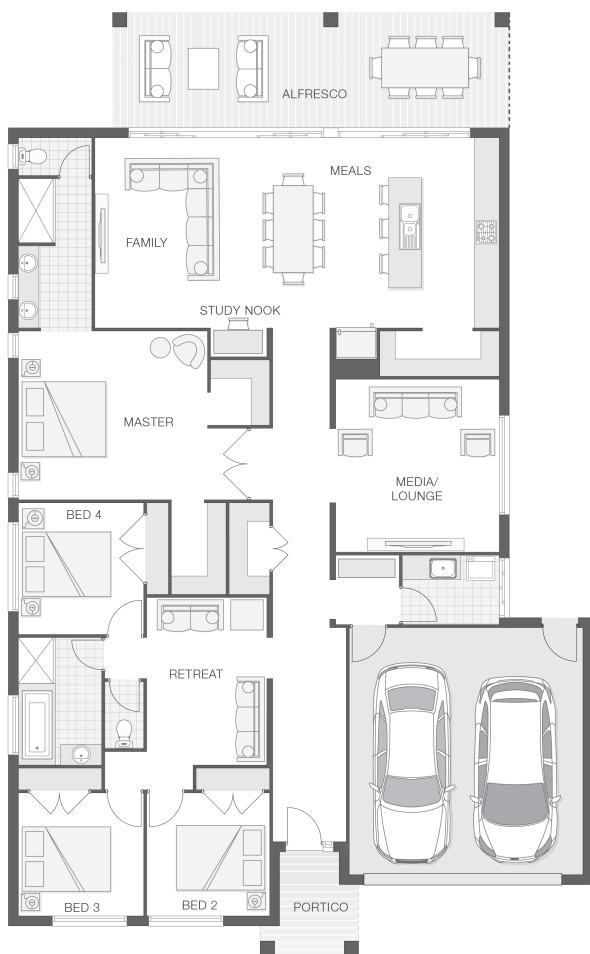


The Indigo

4 2 2 30 sq

Facade name: Bilson

House Plan:



LOT #205

Nautica Fairways

Address: Nautica Fairways, Safety Beach, woolgoolga,
Safety Beach (NSW), 2456



878 m²

House and land package price:

From **\$658,685***

About package:

Government stimulus package of \$25,000 CASH BONUS AVAILABLE NOW!

The Indigo home design is on trend, tasteful and well-appointed, creating the perfect sanctuary for the modern family. The rear of the home is nothing but lifestyle and entertaining with a huge alfresco space spanning the width of the home that seamlessly blends with the internal hub of kitchen, dining and family rooms.

What's included in your beautifully finished, high quality new home

- All Council Fees and Approvals with M Class Soil
- Full sarking wrap to treated timber frames and roof
- Insulation to walls and ceiling, flyscreens
- Carpet / tiles or vinyl flooring
- Recessed wet areas
- Westinghouse appliances
- Alfresco with recessed stacking sliding doors
- Drop-in laundry tub with cabinet and clothesline
- Full electrical layout with downlights and feature lighting and TV aerial
- Water tank, mailbox and concrete driveway

Intensify your Style with up to \$20,000* WORTH OF DESIGNER UPGRADES at NO COST

KITCHEN UPGRADES

ENQUIRE NOW:

Niki Whelan • P: 0412 797 925 • E: coffs.display@adenbrook.com.au

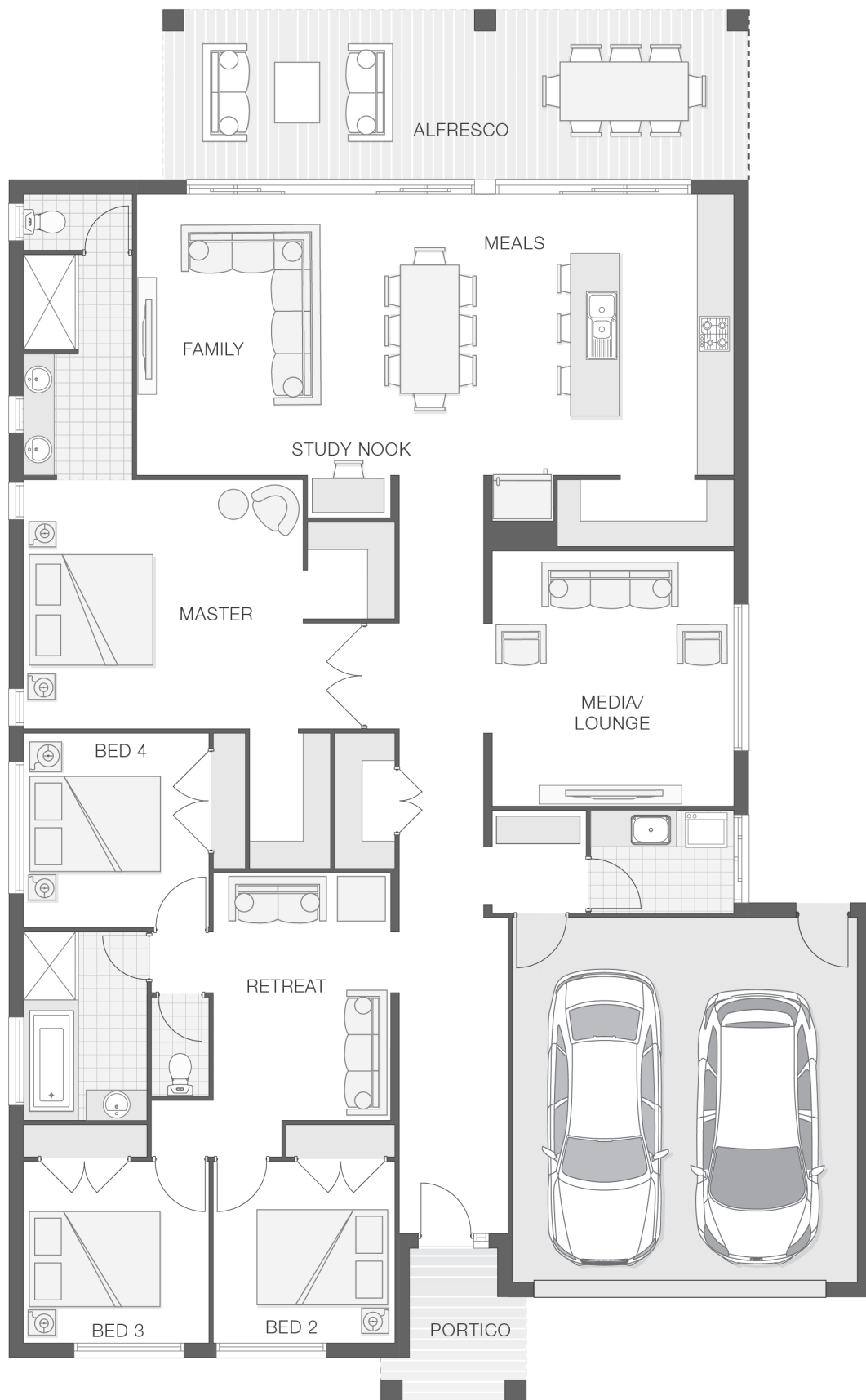
Plans and designs depicted may change with facade selection. All drawings and photographs are for illustrative purposes only. This work is exclusively owned by AB Aust. IP Pty Ltd (ACN 163 575 077) and cannot be reproduced or copied wholly or in part, in any form without permission of AB Aust. IP Pty Ltd. Any prices in this document include GST, are subject to change without notice, relate only to the base house price and standard inclusions. Site costs will vary depending on site conditions, local Council requirements, estate guidelines and any other statutory requirements applicable. Adenbrook Homes does not have a hold on the block, this package is subject to land availability and you securing the land through the land agent directly. For more information please speak to one of our friendly New Home Consultants.

House Features:

- ✓ Concrete Alfresco and Portico areas
- ✓ BAL (Bushfire Attack Level) Allowance
- ✓ Site works allowance
- ✓ Overhead cupboards to kitchen, 4 shelves to Pantry and Linen
- ✓ LED downlights throughout and NBN provision
- ✓ 3 included facade options and complimentary window changes
- ✓ Termite resistant "blue pine" framing and trusses and physical termite barriers
- ✓ Wideline aluminium windows, stacker and sliding doors, and flyscreens
- ✓ Double lock-up garage with remotes, mailbox, and clothesline
- ✓ Services connections, skip bins, site fencing, toilet, and rubbish removal
- ✓ Extended polished edge mirrors full wall width
- ✓ Brick exterior, concrete tile roof, 45sqm grey concrete driveway
- ✓ Guaranteed build time, fixed price and no hidden costs
- ✓ Three (3) coat Haymes low toxic internal paint system
- ✓ Carpet and Tile or Vinyl floors; modern architraves 67mm x 18mm

Estate Features:

- ✓ Minutes to Lighthouse beach
- ✓ Stunning outlook over nature reserve
- ✓ Elevated and spacious
- ✓ Close to schools, cafes and restaurants



ENQUIRE NOW:

Niki Whelan • P: 0412 797 925 • E: coffs.display@adenbrook.com.au

Plans and designs depicted may change with facade selection. All drawings and photographs are for illustrative purposes only. This work is exclusively owned by AB Aust. IP Pty Ltd (ACN 163 575 077) and cannot be reproduced or copied wholly or in part, in any form without permission of AB Aust. IP Pty Ltd. Any prices in this document include GST, are subject to change without notice, relate only to the base house price and standard inclusions. Site costs will vary depending on site conditions, local Council requirements, estate guidelines and any other statutory requirements applicable. Adenbrook Homes does not have a hold on the block, this package is subject to land availability and you securing the land through the land agent directly. For more information please speak to one of our friendly New Home Consultants.