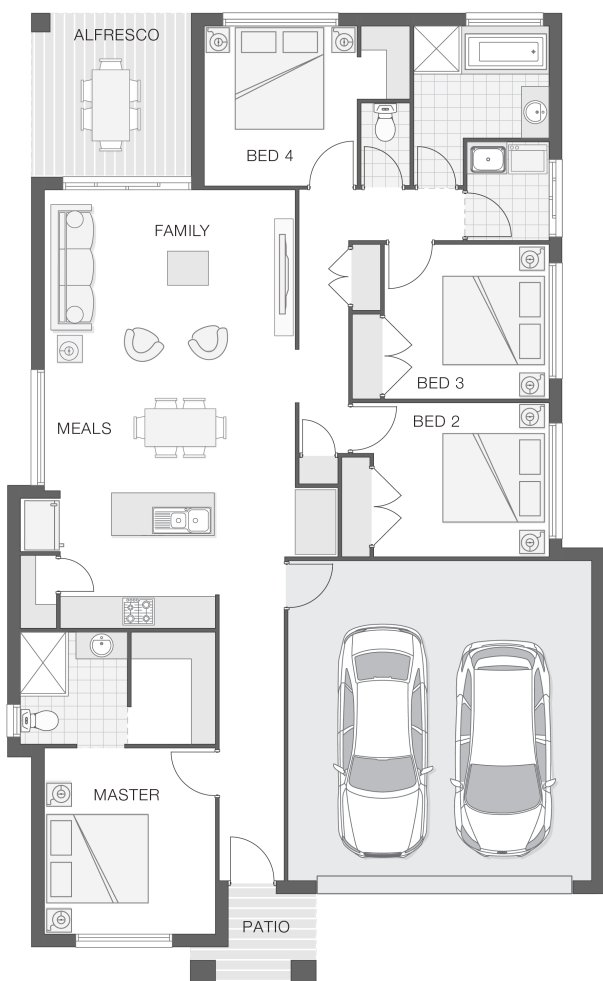


The Willow - MK2

4 2 2 19 sq

Facade name: Haven

House Plan:



LOT #223

The Mill Estate

Address: Stage 2- The Mill, Wauchope, 2446



560 m²

House and land package price:

From **\$504,117***

About package:

Adenbrook Homes Mid North Coast are a locally owned and operated builder, backed by an award winning franchise. We offer turn-key pricing, designed to give you everything you need to move straight in - without the hidden costs.

The Willow home design is popular and practical for the modern family that loves to entertain and enjoy each other's company. The light and bright open plan design provides a great entertaining space within the hub of the home that incorporates the alfresco area, the kitchen and family room and meals zones. The generous master retreat enjoys an ensuite and walk-in-robe. The children's wing provides great separation and is ideal for creating a safe and secure area for the kids.

\$25,000 CASH BONUS AVAILABLE NOW! There has never been a better time to buy a new home than now! The Federal Government has announced a fabulous incentive scheme for new home buyers, with a \$25,000 cash bonus for new home builds. This scheme is available now and will only be available for a limited time, so contact us now to take advantage of this great opportunity. (Eligibility conditions apply)

ENQUIRE NOW:

Angie Walford • P: 0429626412 • E: portmacquarie.display@adenbrook.com.au

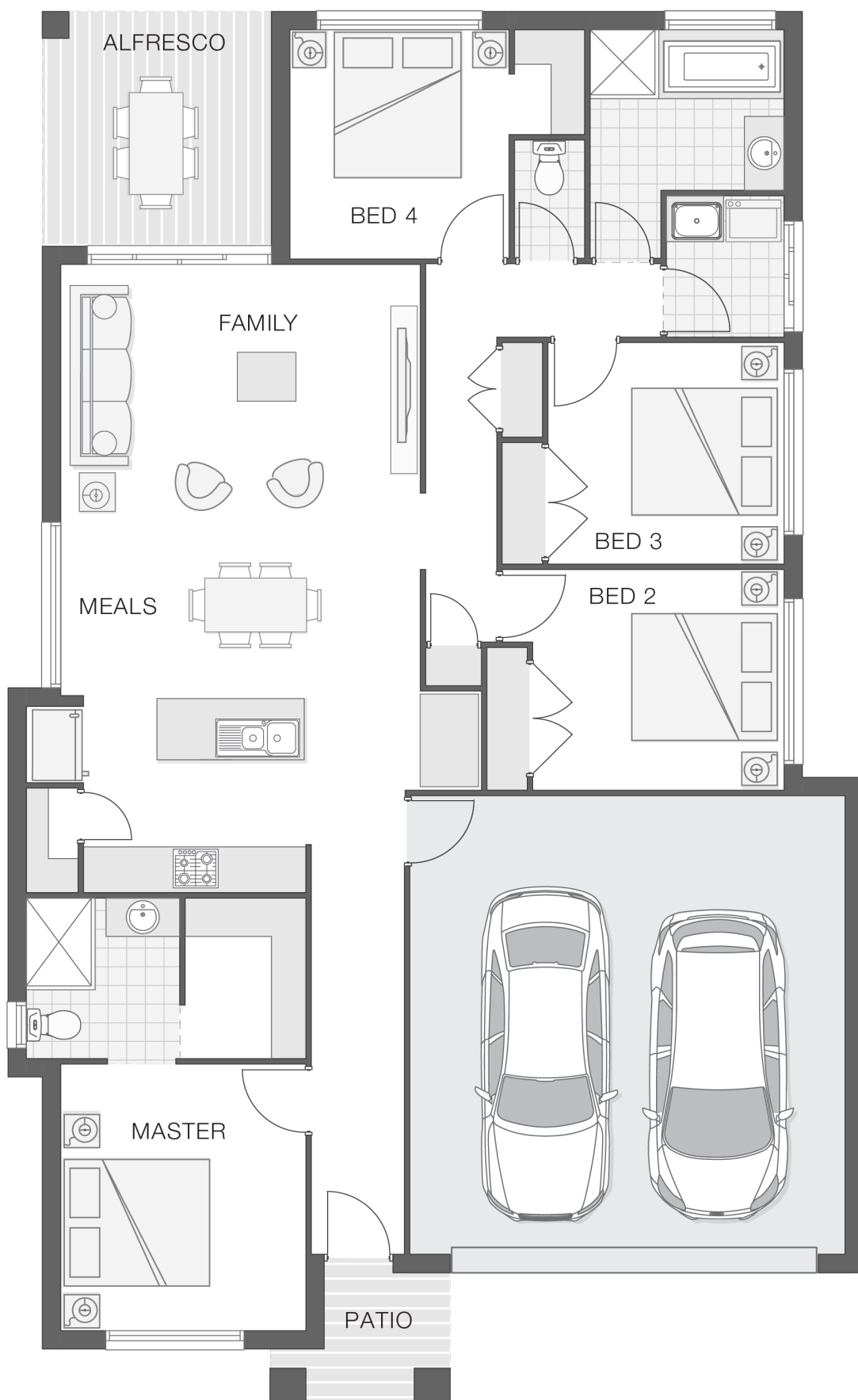
Plans and designs depicted may change with facade selection. All drawings and photographs are for illustrative purposes only. This work is exclusively owned by AB Aust. IP Pty Ltd (ACN 163 575 077) and cannot be reproduced or copied wholly or in part, in any form without permission of AB Aust. IP Pty Ltd. Any prices in this document include GST, are subject to change without notice, relate only to the base house price and standard inclusions. Site costs will vary depending on site conditions, local Council requirements, estate guidelines and any other statutory requirements applicable. Adenbrook Homes does not have a hold on the block, this package is subject to land availability and you securing the land through the land agent directly. For more information please speak to one of our friendly New Home Consultants.

House Features:

- ✓ 20mm stone benchtops to kitchen
- ✓ Concrete Alfresco and Portico areas
- ✓ BAL (Bushfire Attack Level) Allowance
- ✓ Site works allowance
- ✓ Dishwasher
- ✓ Letterbox and Clothesline
- ✓ Quality Timber Look Flooring, Carpet and Tiles
- ✓ Brushed Concrete Driveway
- ✓ Flyscreens
- ✓ Remote Controlled Garage Door + 2 remotes

Estate Features:

- ✓ Home of the Timbertown heritage theme park
- ✓ Close to the beautiful Hastings river
- ✓ 20 minute drive to Port Macquarie
- ✓ 4 hour drive to Sydney



ENQUIRE NOW:

Angie Walford • P: 0429626412 • E: portmacquarie.display@adenbrook.com.au

Plans and designs depicted may change with facade selection. All drawings and photographs are for illustrative purposes only. This work is exclusively owned by AB Aust. IP Pty Ltd (ACN 163 575 077) and cannot be reproduced or copied wholly or in part, in any form without permission of AB Aust. IP Pty Ltd. Any prices in this document include GST, are subject to change without notice, relate only to the base house price and standard inclusions. Site costs will vary depending on site conditions, local Council requirements, estate guidelines and any other statutory requirements applicable. Adenbrook Homes does not have a hold on the block, this package is subject to land availability and you securing the land through the land agent directly. For more information please speak to one of our friendly New Home Consultants.