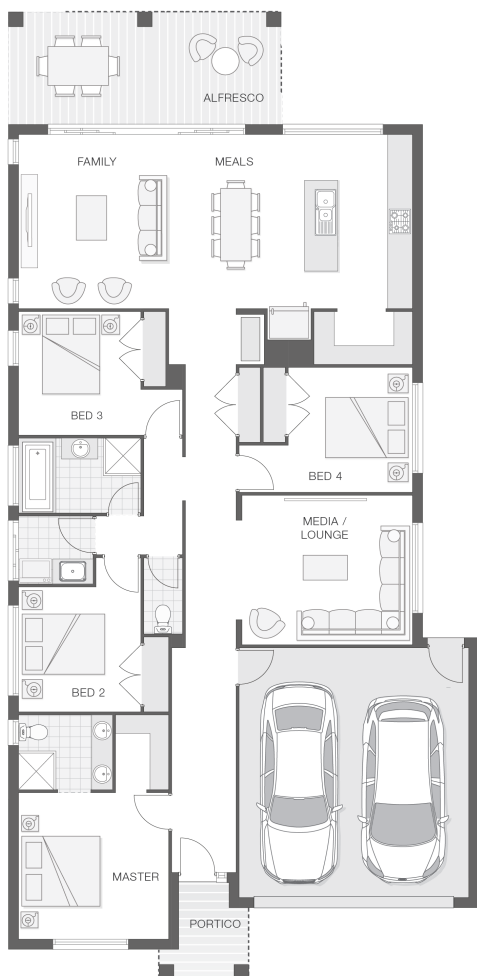


## The Isla - C

4 2 2 24 sq

Facade name: Bilson

### House Plan:



### LOT #225

The Mill Estate

Address: Stage 2- The Mill, Wauchope, 2446



560 m<sup>2</sup>

House and land package price:

From **\$545,875\***

### About package:

Adenbrook Homes Mid North Coast are a locally owned and operated builder, backed by an award winning franchise. We offer turn-key pricing, designed to give you everything you need to move straight in - without the hidden costs.

The Isla home design is sophisticated and stylish, offering all the modern features that you need to relax, entertain and enjoy! The outdoor entertaining area runs the width of the home and flawlessly integrates with the family room, meals area and generous kitchen complete with butler's pantry creating an oversized entertainers delight. The master retreat with ensuite and walk-in-robe boasts great separation while the central living zone is dedicated to additional bedrooms and the media room.

**\$25,000 CASH BONUS AVAILABLE NOW!** There has never been a better time to buy a new home than now! The Federal Government has announced a fabulous incentive scheme for new home buyers, with a \$25,000 cash bonus for new home builds. This scheme is available now and will only be available for a limited time, so contact us now to take advantage of this great opportunity. (Eligibility conditions apply)

### ENQUIRE NOW:

Angie Walford • P: 0429626412 • E: [portmacquarie.display@adenbrook.com.au](mailto:portmacquarie.display@adenbrook.com.au)

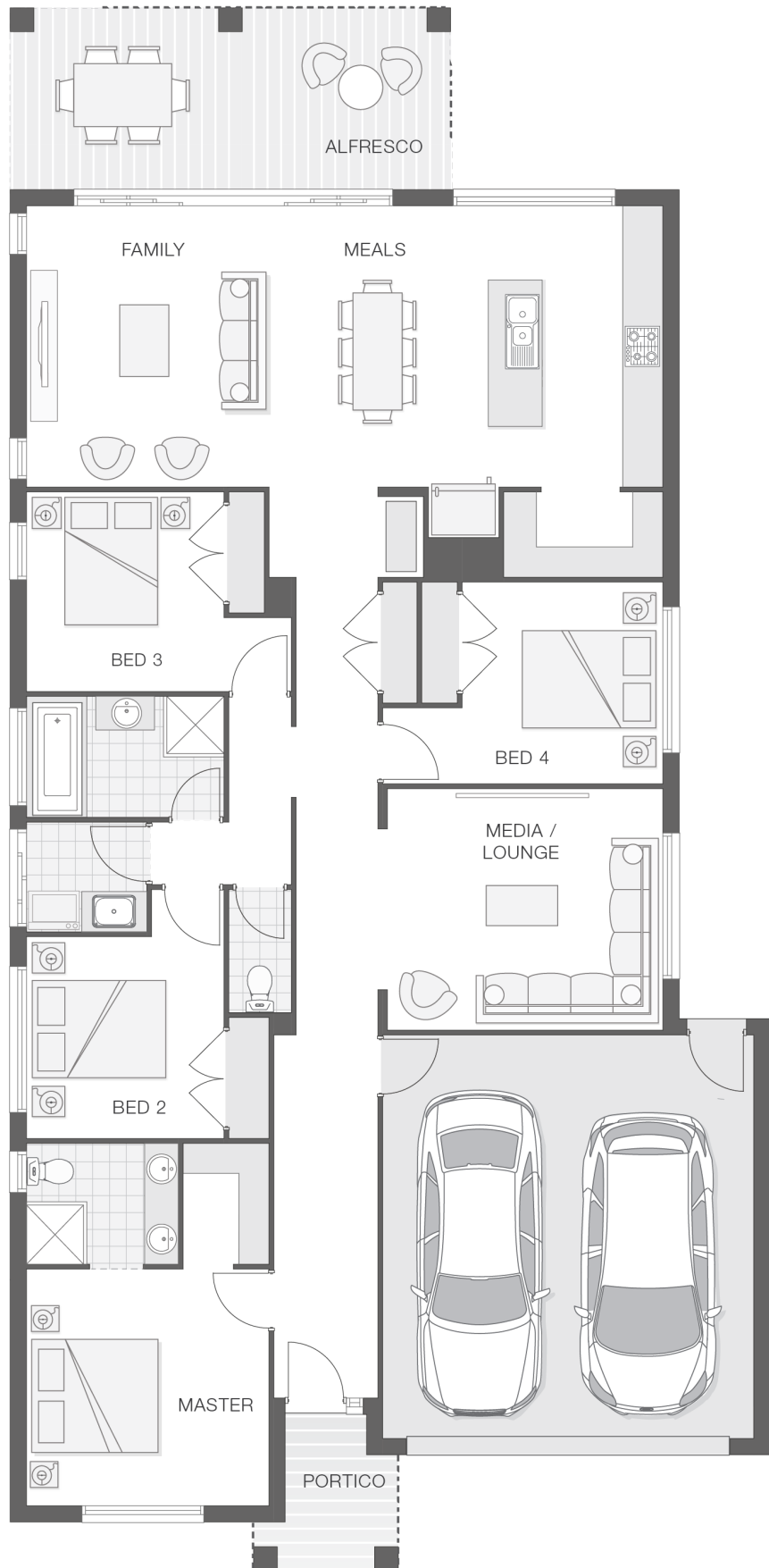
Plans and designs depicted may change with facade selection. All drawings and photographs are for illustrative purposes only. This work is exclusively owned by AB Aust. IP Pty Ltd (ACN 163 575 077) and cannot be reproduced or copied wholly or in part, in any form without permission of AB Aust. IP Pty Ltd. Any prices in this document include GST, are subject to change without notice, relate only to the base house price and standard inclusions. Site costs will vary depending on site conditions, local Council requirements, estate guidelines and any other statutory requirements applicable. Adenbrook Homes does not have a hold on the block, this package is subject to land availability and you securing the land through the land agent directly. For more information please speak to one of our friendly New Home Consultants.

### House Features:

- ✓ 20mm stone benchtops to kitchen
- ✓ Brushed Concrete Driveway
- ✓ Flyscreens
- ✓ Remote Controlled Garage Door + 2 remotes
- ✓ Concrete Alfresco and Portico areas
- ✓ BAL (Bushfire Attack Level) Allowance
- ✓ Site works allowance
- ✓ Quality Timber Look Flooring, Carpet and Tiles
- ✓ Dishwasher
- ✓ Letterbox and Clothesline

### Estate Features:

- ✓ Close to the beautiful Hastings river
- ✓ Home of the Timbertown heritage theme park
- ✓ 20 minute drive to Port Macquarie
- ✓ 4 hour drive to Sydney



### ENQUIRE NOW:

Angie Walford • P: 0429626412 • E: [portmacquarie.display@adenbrook.com.au](mailto:portmacquarie.display@adenbrook.com.au)

Plans and designs depicted may change with facade selection. All drawings and photographs are for illustrative purposes only. This work is exclusively owned by AB Aust. IP Pty Ltd (ACN 163 575 077) and cannot be reproduced or copied wholly or in part, in any form without permission of AB Aust. IP Pty Ltd. Any prices in this document include GST, are subject to change without notice, relate only to the base house price and standard inclusions. Site costs will vary depending on site conditions, local Council requirements, estate guidelines and any other statutory requirements applicable. Adenbrook Homes does not have a hold on the block, this package is subject to land availability and you securing the land through the land agent directly. For more information please speak to one of our friendly New Home Consultants.