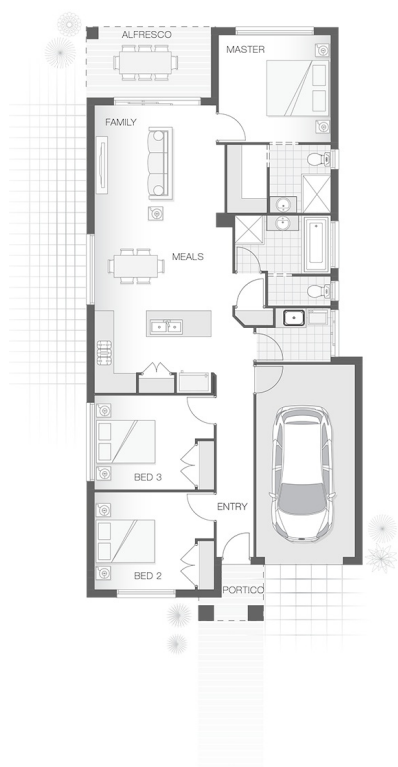


The Dawson Option Z

3 2 1 15 sq

Facade name: Haven

House Plan:



LOT #171

Bingara Gorge

Address: TBA, Wilton (NSW), 2571



250 m²

House and land package price:

From **\$527,900***

About package:

This Adenbrook Home & Land package is located in the highly sought-after estate of Bingara Gorge.

Set on a 250m² block of land, we have coupled it with our Dawson Z home design.

The Dawson home design is contemporary and intended to accommodate a small lot, yet still deliver on space, featuring a clever layout that is ideal for the growing family.

The master retreat occupies the rear of the home alongside the alfresco dining space which flows through the open plan family, meals and kitchen zones then onto the additional bedrooms.

The slim design ensures comfort while providing functionality for entertaining and family living.

This House and Land Package includes:-

- * Site Specific site Costs and Developer Compliance
- * Builders range laminate & carpet throughout home
- * Tiling to the Alfresco and Portico
- * Coloured Concrete Driveway
- * Split System Air conditioning
- * Caroma Bathroom Accessories
- * PLUS our fantastic Ultimate Upgrade Bundle!
- Our ULTIMATE BUNDLE PACKAGE has fantastic inclusions of
- * Monier Atura Low Profile Roof Tiles
- * 1020mm Entry Door
- * 20mm Stone benchtop to the kitchen, bathroom and Ensuite.
- * Westinghouse Dishwasher and Microwave, just to name a few

ENQUIRE NOW:

Jillian Stokes • P: 0415 301 615 • E: greaterwollongong@adenbrook.com.au

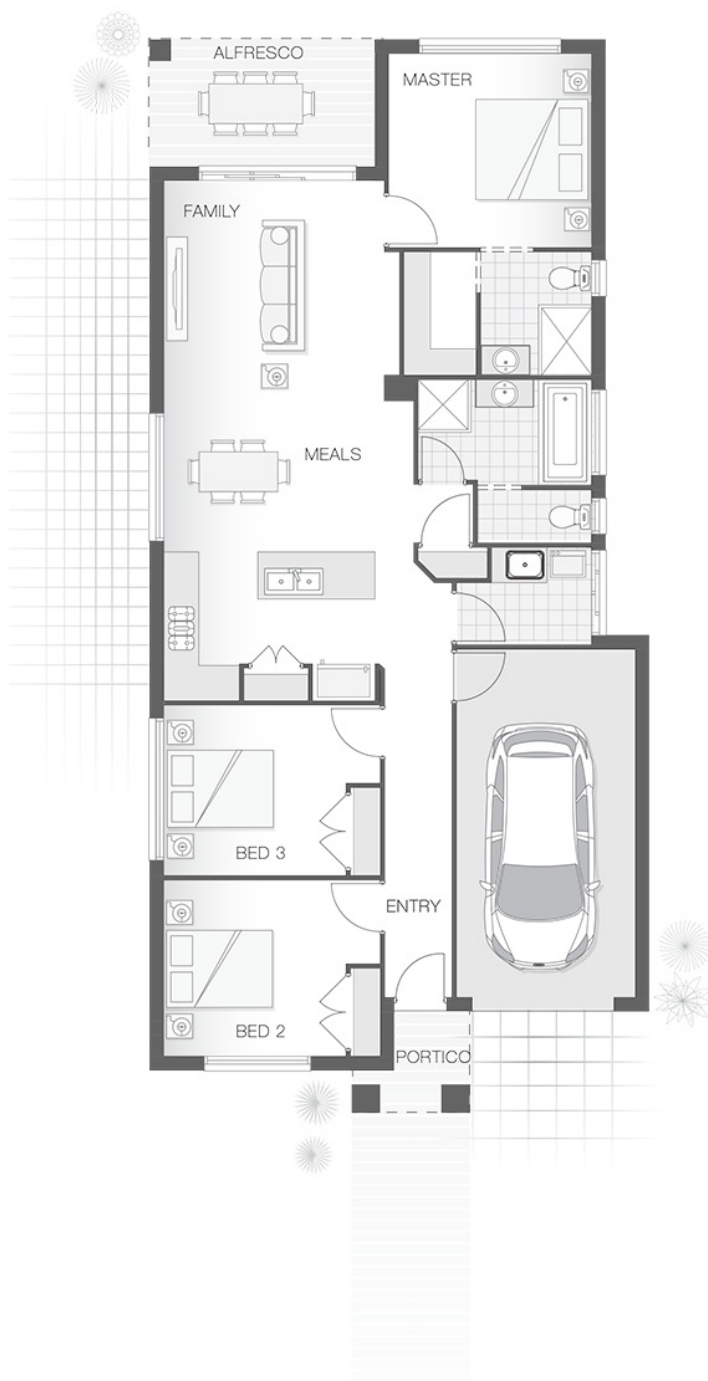
Plans and designs depicted may change with facade selection. All drawings and photographs are for illustrative purposes only. This work is exclusively owned by AB Aust. IP Pty Ltd (ACN 163 575 077) and cannot be reproduced or copied wholly or in part, in any form without permission of AB Aust. IP Pty Ltd. Any prices in this document include GST, are subject to change without notice, relate only to the base house price and standard inclusions. Site costs will vary depending on site conditions, local Council requirements, estate guidelines and any other statutory requirements applicable. Adenbrook Homes does not have a hold on the block, this package is subject to land availability and you securing the land through the land agent directly. For more information please speak to one of our friendly New Home Consultants.

House Features:

- ✓ Builders range tiles & carpet throughout home
- ✓ Tiling to the Alfresco and Portico
- ✓ Coloured Concrete Driveway
- ✓ Daiken Reverse Cycle Ducted Air Conditioning
- ✓ 1020mm Entry Door
- ✓ 20mm Stone benchtop to the kitchen, bathroom and Ensuite.
- ✓ Westinghouse Cooktop, Oven and Dishwasher
- ✓ Shower Niches
- ✓ 2x Gas Points
- ✓ Monier Atura low-profile roof tiles
- ✓ R2 Walls and R4 Ceiling Insulation
- ✓ Flyscreens To all openable windows
- ✓ Clipsal Iconic Ultramodern range Switch Gear
- ✓ Soft-close drawers and doors to Kitchen and Bathrooms
- ✓ Much More...
- ✓ 2590mm Ceiling Upgrade

Estate Features:

- ✓ Bingara Gorge Golf Club
- ✓ Pulse Leisure Centre
- ✓ Bingara Gorge Community Preschool



ENQUIRE NOW:

Jillian Stokes • P: 0415 301 615 • E: greaterwollongong@adenbrook.com.au

Plans and designs depicted may change with facade selection. All drawings and photographs are for illustrative purposes only. This work is exclusively owned by AB Aust. IP Pty Ltd (ACN 163 575 077) and cannot be reproduced or copied wholly or in part, in any form without permission of AB Aust. IP Pty Ltd. Any prices in this document include GST, are subject to change without notice, relate only to the base house price and standard inclusions. Site costs will vary depending on site conditions, local Council requirements, estate guidelines and any other statutory requirements applicable. Adenbrook Homes does not have a hold on the block, this package is subject to land availability and you securing the land through the land agent directly. For more information please speak to one of our friendly New Home Consultants.