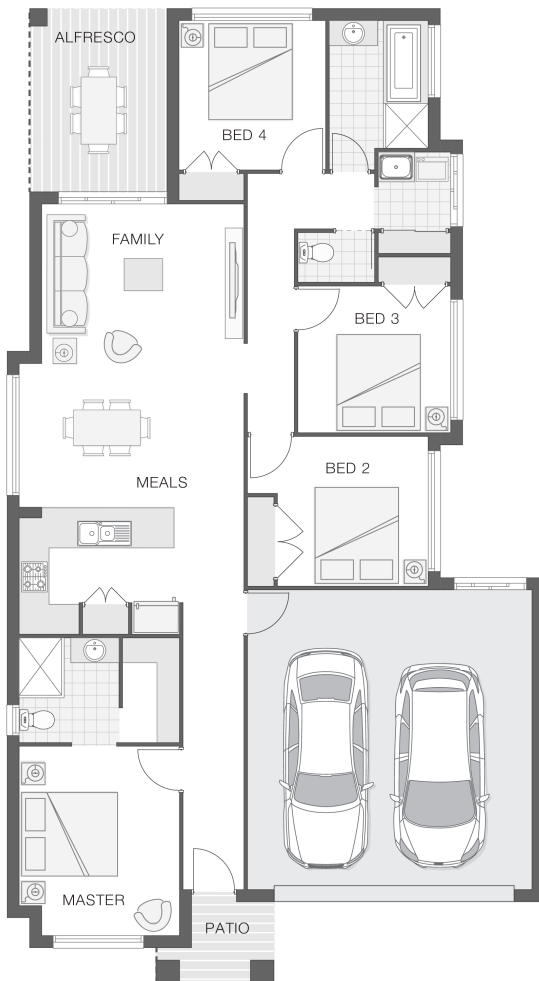




House Plan:



LOT #69

The Landing, Strathpine
Address: Strathpine, 4500



388 m²

The Willow

Package Price From

4 2 2 19 sq

\$501,469*

About package:

The Willow home design is popular and practical for the modern family that loves to entertain and enjoy each other's company. The light and bright open plan design provides a great entertaining space within the hub of the home that incorporates the alfresco area, the kitchen and family room and meals zones. The generous master retreat enjoys an ensuite and walk-in-robe. The children's wing provides great separation and is ideal for creating a safe and secure area for the kids.

\$25,000 CASH BONUS AVAILABLE NOW! There has never been a better time to buy a new home than now! The Federal Government has announced a fabulous incentive scheme for new home buyers, with a \$25,000 cash bonus for new home builds. This scheme is available now and will only be available for a limited time, so contact us now to take advantage of this great opportunity. (Eligibility conditions apply)

ENQUIRE NOW:

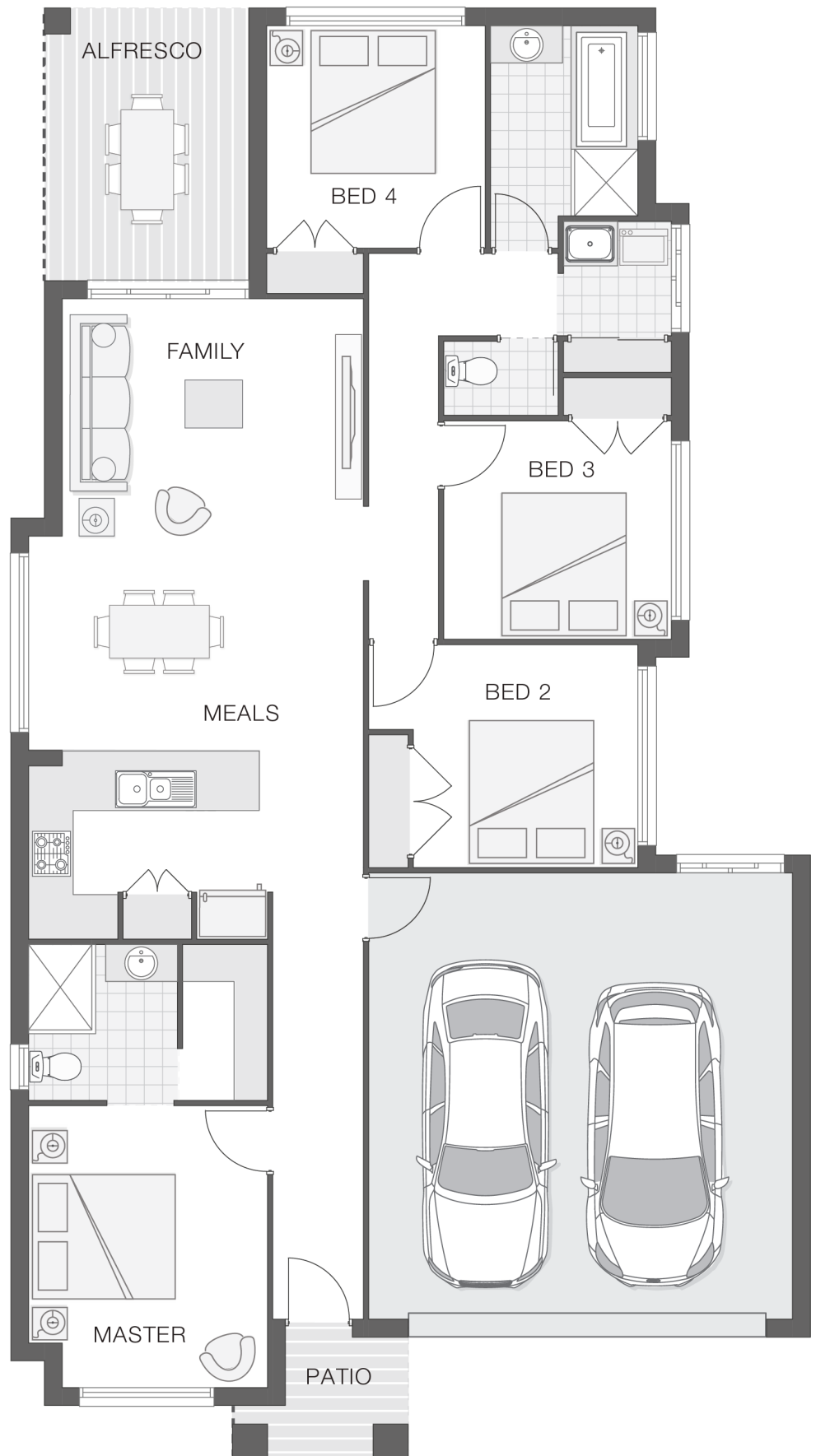
Brendan Wekeem • P: 0400 901 485 • E: Brendan.wekeem@adenbrook.com.au

Images depicted on this site are for illustration purposes only. Facades and other images of homes and land estates may include optional upgrades, additional fixtures, finishes and home or estate features that are not included in the base price of the home or land package such as landscaping, feature tiling, decking, furnishing, feature lighting, pools, etc. Land estate pricing and plans are subject to developer guidelines and may vary at any time.

Powered by iBuildNew

House Features:

- ✓ Tiling and carpet throughout
- ✓ Exposed aggregate driveway and path
- ✓ Monier Atura Low-profile roof tiles or Colorbond roof
- ✓ 2590mm ceiling height to lower level
- ✓ Flyscreens to windows
- ✓ LED downlights
- ✓ Cold water tap to fridge space
- ✓ 20mm stone benchtops to kitchen, ensuite and bathrooms
- ✓ Westinghouse stainless steel dishwasher
- ✓ Externally ducted rangehood
- ✓ Soft-close drawers to kitchen, ensuite and bathrooms
- ✓ Shower niche to ensuite & bathroom
- ✓ 1020mm entry door



ENQUIRE NOW:

Brendan Wekeem • P: 0400 901 485 • E: Brendan.wekeem@adenbrook.com.au

Images depicted on this site are for illustration purposes only. Facades and other images of homes and land estates may include optional upgrades, additional fixtures, finishes and home or estate features that are not included in the base price of the home or land package such as landscaping, feature tiling, decking, furnishing, feature lighting, pools, etc. Land estate pricing and plans are subject to developer guidelines and may vary at any time.