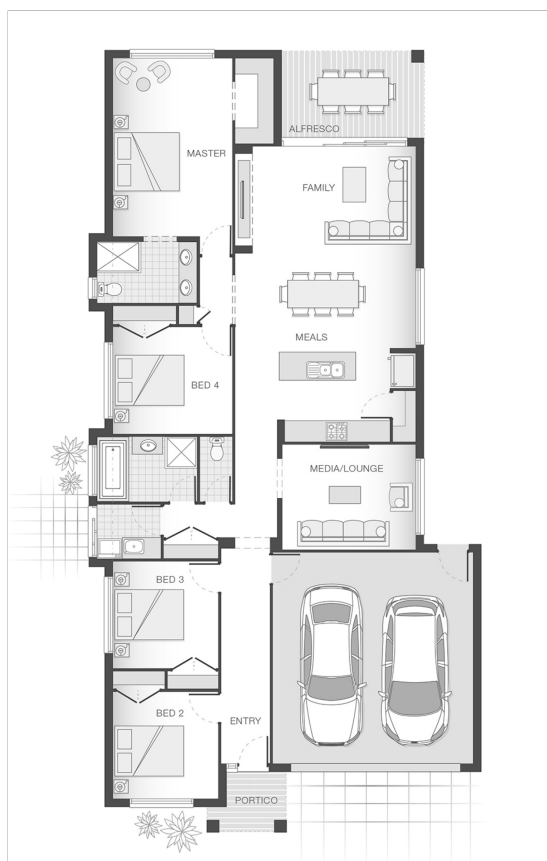




House Plan:



LOT #428

Ellendale

Address: Drovers Street, Upper Kedron, 4055



400 m²

The Keppel

Package Price From



\$632,739*

About package:

The Keppel home design is modern and meticulous with attention to detail at every turn. The design essentially separates the home into individual zones to provide privacy and tranquility while also accommodating entertainment and family living. The hub of this home is the chefs style kitchen with walk-in-pantry and living space that is fringed by the alfresco at one end and media or family room at the other. The bedrooms are spread across the opposing side of the house creating great separation and easy flow throughout the home.

\$25,000 CASH BONUS AVAILABLE NOW! There has never been a better time to buy a new home than now! The Federal Government has announced a fabulous incentive scheme for new home buyers, with a \$25,000 cash bonus for new home builds. This scheme is available now and will only be available for a limited time, so contact us now to take advantage of this great opportunity. (Eligibility conditions apply)

ENQUIRE NOW:

Brendan Wekeem • P: 0400 901 485 • E: brisbane.display@adenbrook.com.au

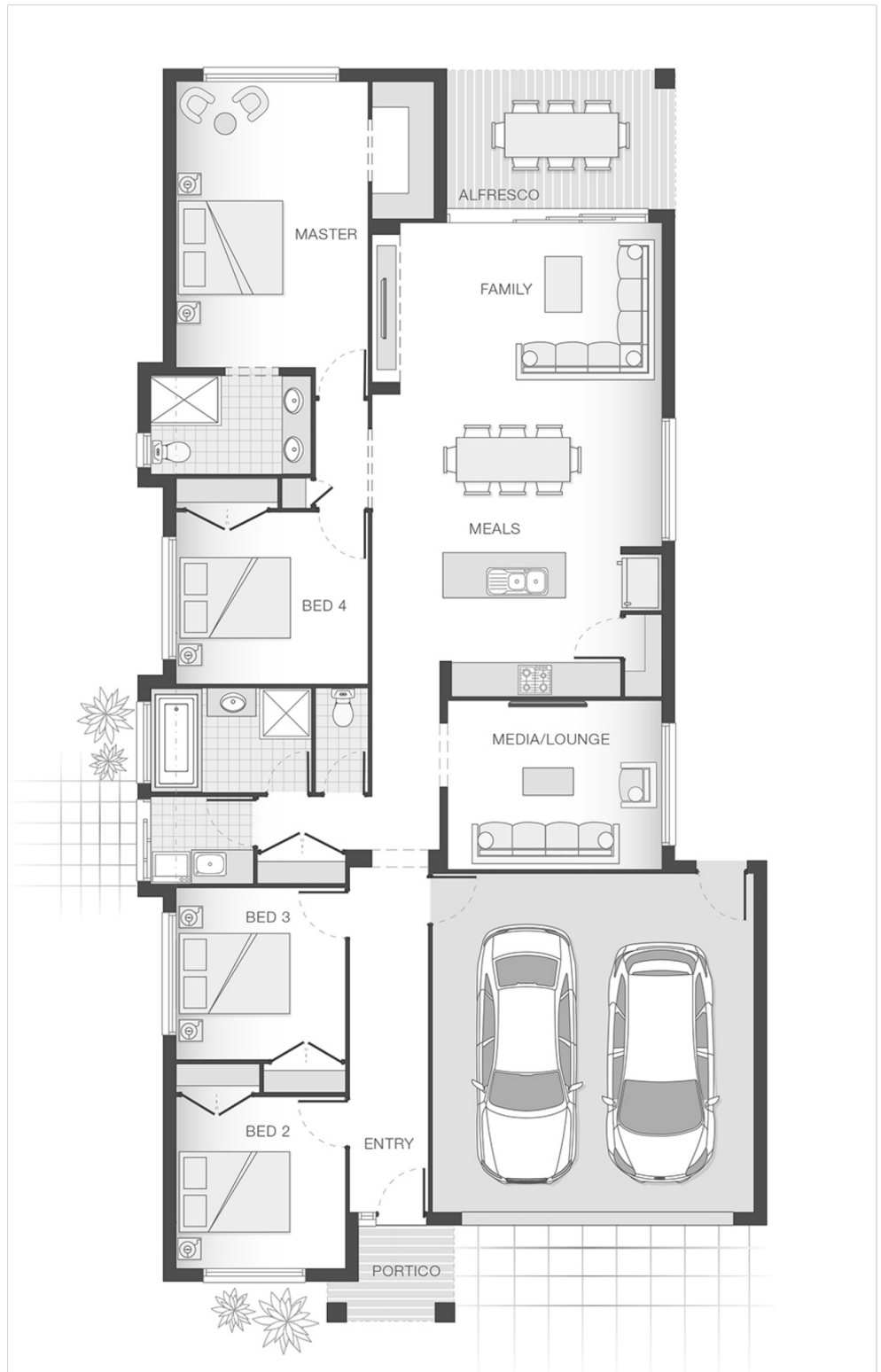
Images depicted on this site are for illustration purposes only. Facades and other images of homes and land estates may include optional upgrades, additional fixtures, finishes and home or estate features that are not included in the base price of the home or land package such as landscaping, feature tiling, decking, furnishing, feature lighting, pools, etc. Land estate pricing and plans are subject to developer guidelines and may vary at any time.

House Features:

- ✓ Tiling and carpet throughout
- ✓ Exposed aggregate driveway and path
- ✓ 1020mm entry door
- ✓ Monier Atura Low-profile roof tiles or Colorbond roof
- ✓ 2590mm ceiling height to lower level
- ✓ Flyscreens to windows
- ✓ LED downlights
- ✓ Cold water tap to fridge space
- ✓ 20mm stone benchtops to kitchen, ensuite and bathrooms
- ✓ Westinghouse stainless steel dishwasher
- ✓ Externally ducted rangehood
- ✓ Soft-close drawers to kitchen, ensuite and bathrooms
- ✓ Shower niche to ensuite & bathroom

Estate Features:

- ✓ St Andrew's Catholic School
- ✓ Arana Hills Plaza, Patricks Rd & Dawson Parade
- ✓ Ferny Grove Station



ENQUIRE NOW:

Brendan Wekeem • P: 0400 901 485 • E: brisbane.display@adenbrook.com.au

Images depicted on this site are for illustration purposes only. Facades and other images of homes and land estates may include optional upgrades, additional fixtures, finishes and home or estate features that are not included in the base price of the home or land package such as landscaping, feature tiling, decking, furnishing, feature lighting, pools, etc. Land estate pricing and plans are subject to developer guidelines and may vary at any time.