



The Baywood - B

4 2 2 29 sq

Facade name: Karin

House Plan:



LOT #46

Edgewater Shores Estate

Address: The Sands Way, Diamond Beach, 2430



603.8 m²

House and land package price:

From **\$638,127***

About package:

Adenbrook Homes Mid North Coast are a locally owned and operated builder, backed by an award winning franchise. We offer turn-key pricing, designed to give you everything you need to move straight in - without the hidden costs.

The Baywood home design is equally as stylish as it is tasteful. The layout affords privacy and separation while also offering a central heart of the home which is comprised of kitchen, dining and alfresco space ideal for entertainment, enjoyment and relaxation. The master retreat with ensuite and walk-in-robe is expansive and provides the perfect haven to escape to for quiet moments. The Baywood also cleverly presents a separate office or study space and a children's retreat amongst the bedroom wing making it practical and private for the entire family.

Limited Time Offer available from July 1, 2020 - Intensify Your Style with up to \$20,000* worth of designer upgrades at no additional cost. Choose from an exclusive range of stylish kitchen and bathroom upgrades that will provide the finishing touches to define your new home. Team this offer up with the \$25,000 HomeBuilder Scheme for eligible buyers and get your dream home for less! There has never been a better time to build your new home.

ENQUIRE NOW:

Angie Walford • P: 0429626412 • E: portmacquarie.display@adenbrook.com.au

adenbrook
homes

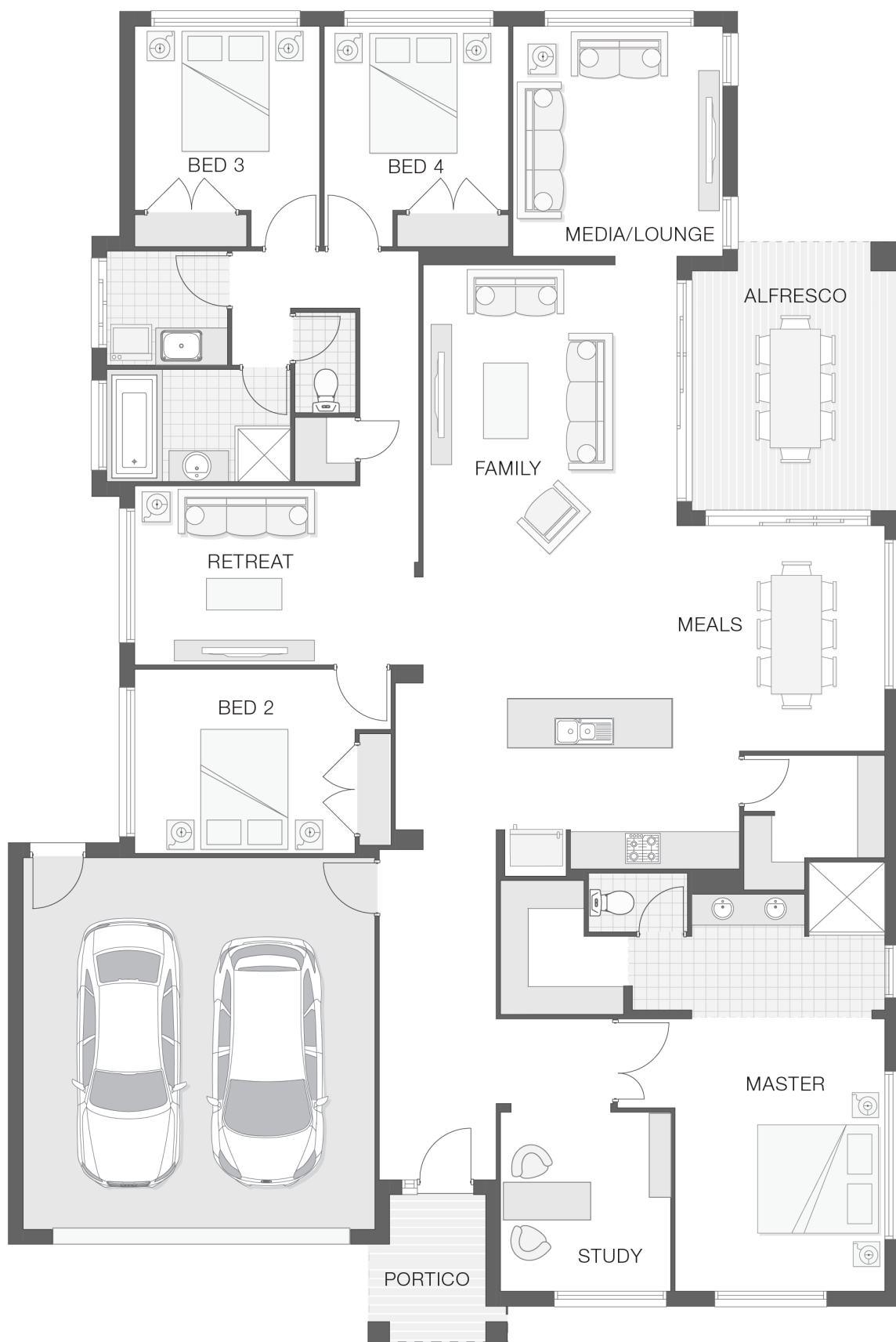
Plans and designs depicted may change with facade selection. All drawings and photographs are for illustrative purposes only. This work is exclusively owned by AB Aust. IP Pty Ltd (ACN 163 575 077) and cannot be reproduced or copied wholly or in part, in any form without permission of AB Aust. IP Pty Ltd. Any prices in this document include GST, are subject to change without notice, relate only to the base house price and standard inclusions. Site costs will vary depending on site conditions, local Council requirements, estate guidelines and any other statutory requirements applicable. Adenbrook Homes does not have a hold on the block, this package is subject to land availability and you securing the land through the land agent directly. For more information please speak to one of our friendly New Home Consultants.

House Features:

- ✓ 20mm stone benchtops to kitchen
- ✓ Flyscreens
- ✓ Remote Controlled Garage Door + 2 remotes
- ✓ 1200mm Hinged Wideline Aluminium Entry Door
- ✓ 2570mm high ceilings
- ✓ Site works allowance
- ✓ Concrete Alfresco and Portico areas
- ✓ Quality Timber Look Flooring, Carpet and Tiles
- ✓ Dishwasher
- ✓ Letterbox and Clothesline
- ✓ 900mm Cooker and Dishwasher

Estate Features:

- ✓ 20 minutes from Forster Tuncurry
- ✓ Close to local school
- ✓ Close to Beach
- ✓ Close to Beaches
- ✓ Local Shops
- ✓ 30 minutes to Taree
- ✓ Beach Access
- ✓ 25km from Forster Tuncurry
- ✓ Three hours north of Sydney



ENQUIRE NOW:

Angie Walford • P: 0429626412 • E: portmacquarie.display@adenbrook.com.au

Plans and designs depicted may change with facade selection. All drawings and photographs are for illustrative purposes only. This work is exclusively owned by AB Aust. IP Pty Ltd (ACN 163 575 077) and cannot be reproduced or copied wholly or in part, in any form without permission of AB Aust. IP Pty Ltd. Any prices in this document include GST, are subject to change without notice, relate only to the base house price and standard inclusions. Site costs will vary depending on site conditions, local Council requirements, estate guidelines and any other statutory requirements applicable. Adenbrook Homes does not have a hold on the block, this package is subject to land availability and you securing the land through the land agent directly. For more information please speak to one of our friendly New Home Consultants.