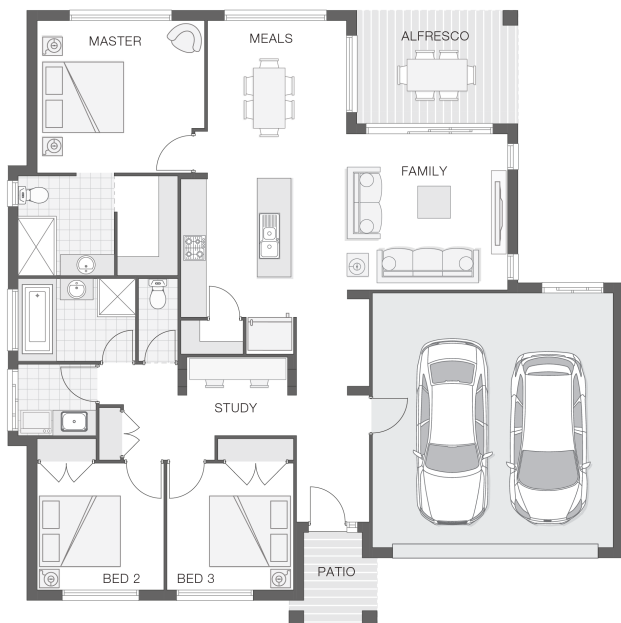


The Sorrento

3 2 2 19 sq

Facade name: Byron

House Plan:



LOT #2

Seawide Estate

Address: Summer Circuit, Lake Cathie, 2445



450 m²

House and land package price:

From **\$566,965***

About package:

Adenbrook Homes Mid North Coast are a locally owned and operated builder, backed by an award winning franchise. We offer turn-key pricing, designed to give you everything you need to move straight in - without the hidden costs.

The Sorrento home design is ideal for easy family living on a traditional block. The clever design boasts a spacious kitchen, open plan meals and family room that flow effortlessly into the alfresco dining area. The master retreat with ensuite and walk-in-robe is tucked away from the rest of the home providing great privacy and separation. The study nook makes homework easy while the additional bedrooms offer comfort and convenient family living.

\$25,000 CASH BONUS AVAILABLE NOW! There has never been a better time to buy a new home than now! The Federal Government has announced a fabulous incentive scheme for new home buyers, with a \$25,000 cash bonus for new home builds. This scheme is available now and will only be available for a limited time, so contact us now to take advantage of this great opportunity. (Eligibility conditions apply)

ENQUIRE NOW:

Angie Walford • P: 0429626412 • E: portmacquarie.display@adenbrook.com.au

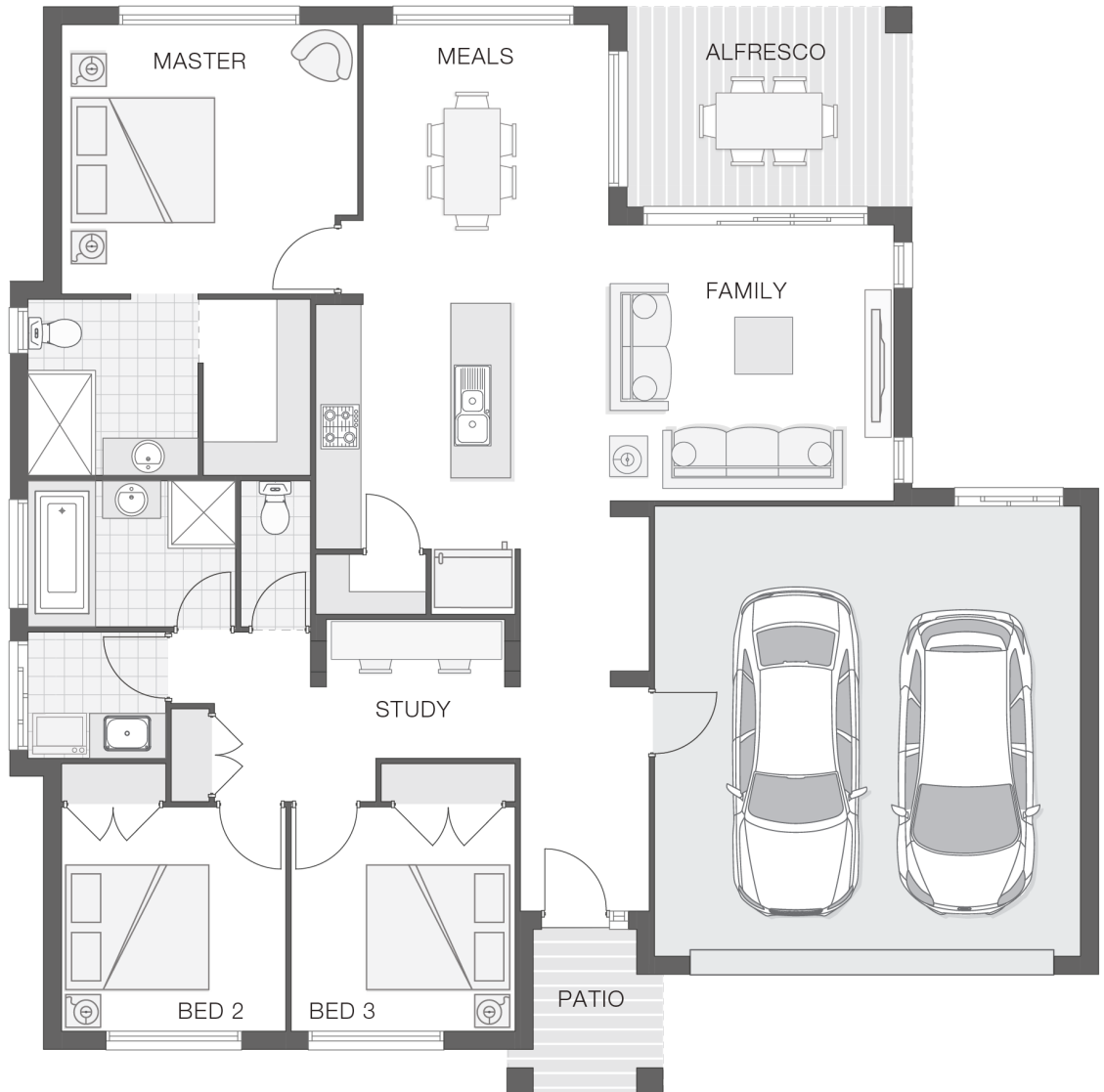
Plans and designs depicted may change with facade selection. All drawings and photographs are for illustrative purposes only. This work is exclusively owned by AB Aust. IP Pty Ltd (ACN 163 575 077) and cannot be reproduced or copied wholly or in part, in any form without permission of AB Aust. IP Pty Ltd. Any prices in this document include GST, are subject to change without notice, relate only to the base house price and standard inclusions. Site costs will vary depending on site conditions, local Council requirements, estate guidelines and any other statutory requirements applicable. Adenbrook Homes does not have a hold on the block, this package is subject to land availability and you securing the land through the land agent directly. For more information please speak to one of our friendly New Home Consultants.

House Features:

- ✓ 20mm stone benchtops to kitchen
- ✓ 900mm Cooker and Dishwasher
- ✓ Grey water connection
- ✓ 1200mm Hinged Wideline Aluminium Entry Door
- ✓ Remote Controlled Garage Door + 2 remotes
- ✓ Flyscreens
- ✓ 2570mm high ceilings
- ✓ Site works allowance
- ✓ Concrete Alfresco and Portico areas
- ✓ Dishwasher
- ✓ Letterbox and Clothesline
- ✓ Quality Timber Look Flooring, Carpet and Tiles

Estate Features:

- ✓ 700m to Rainbow Beach
- ✓ Relaxed beachside lifestyle
- ✓ 15 minutes from Port Macquarie
- ✓ Close to local Shops, Cafes and Medical Center



ENQUIRE NOW:

Angie Walford • P: 0429626412 • E: portmacquarie.display@adenbrook.com.au

Plans and designs depicted may change with facade selection. All drawings and photographs are for illustrative purposes only. This work is exclusively owned by AB Aust. IP Pty Ltd (ACN 163 575 077) and cannot be reproduced or copied wholly or in part, in any form without permission of AB Aust. IP Pty Ltd. Any prices in this document include GST, are subject to change without notice, relate only to the base house price and standard inclusions. Site costs will vary depending on site conditions, local Council requirements, estate guidelines and any other statutory requirements applicable. Adenbrook Homes does not have a hold on the block, this package is subject to land availability and you securing the land through the land agent directly. For more information please speak to one of our friendly New Home Consultants.