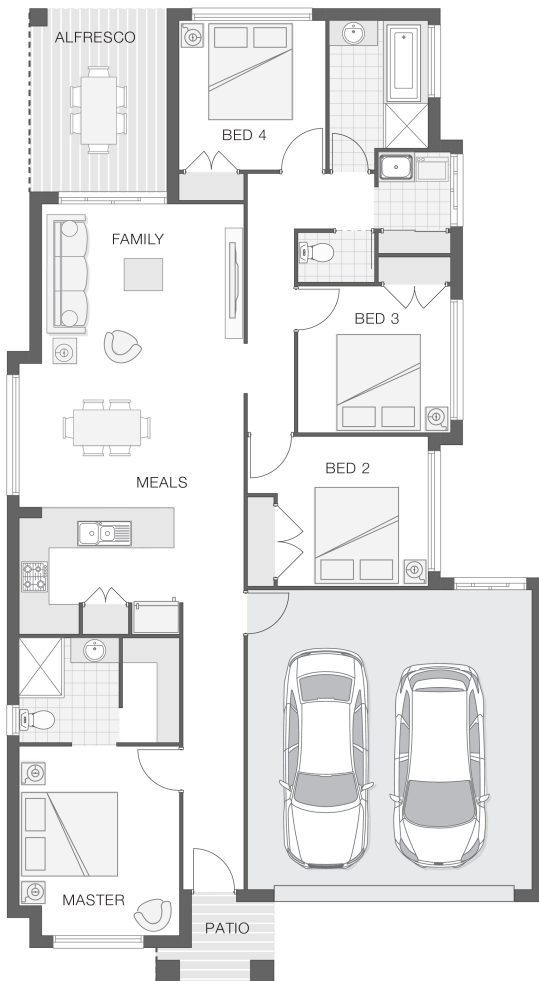




House Plan:



LOT #1013

Everleigh

Address: Teal Circuit, Greenbank, 4124



446 m<sup>2</sup>

The Willow

Package Price From

4

2

2

19 sq

**\$407,229\***

About package:

The Willow home design is popular and practical for the modern family that loves to entertain and enjoy each other's company. The light and bright open plan design provides a great entertaining space within the hub of the home that incorporates the alfresco area, the kitchen and family room and meals zones. The generous master retreat enjoys an ensuite and walk-in-robe. The children's wing provides great separation and is ideal for creating a safe and secure area for the kids.

ENQUIRE NOW:

Brendan Wekeem • P: 0400 901 485 • E: [brisbane.display@adenbrook.com.au](mailto:brisbane.display@adenbrook.com.au)

Images depicted on this site are for illustration purposes only. Facades and other images of homes and land estates may include optional upgrades, additional fixtures, finishes and home or estate features that are not included in the base price of the home or land package such as landscaping, feature tiling, decking, furnishing, feature lighting, pools, etc. Land estate pricing and plans are subject to developer guidelines and may vary at any time.

Powered by iBuildNew

adenbrook  
homes

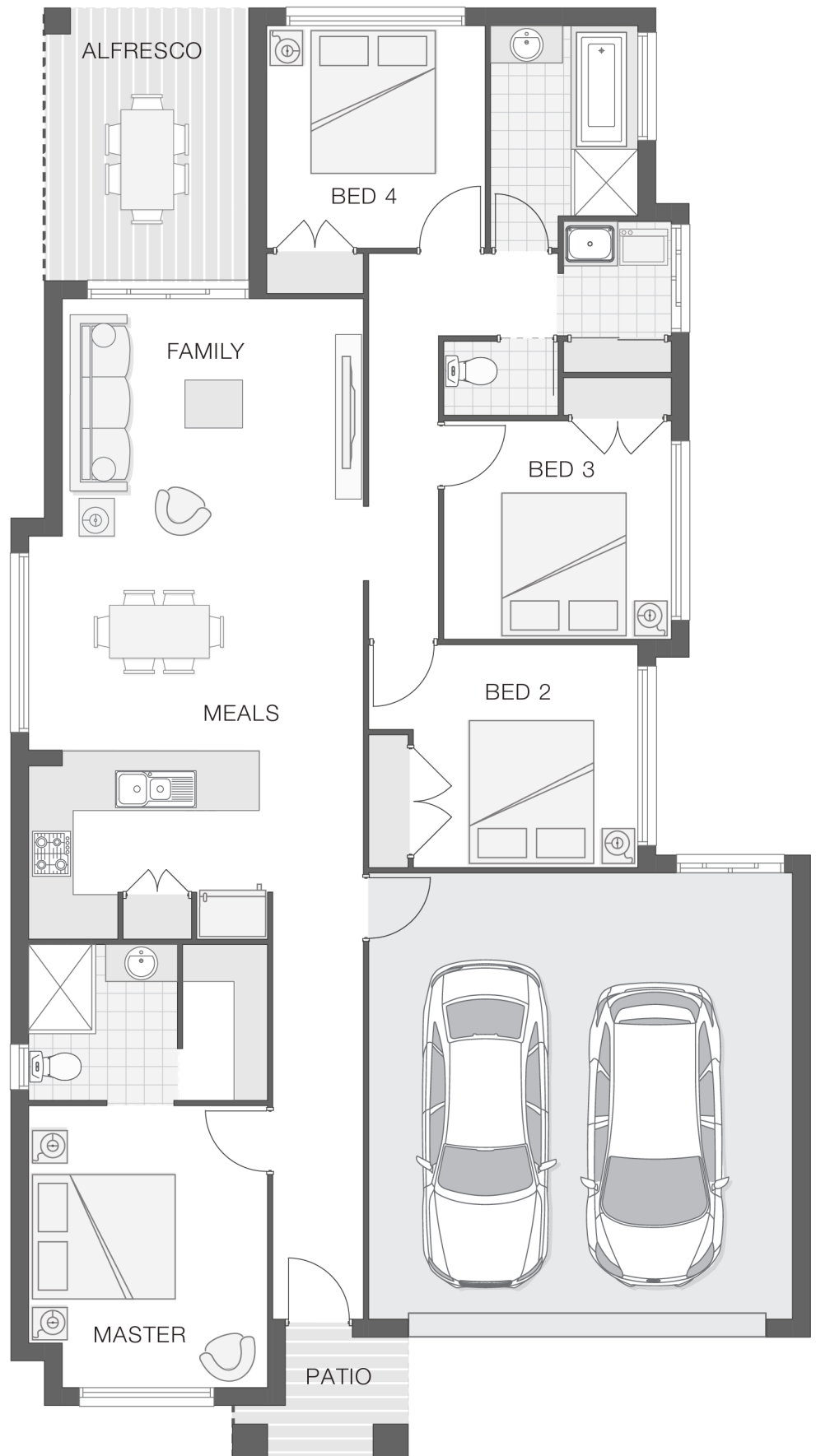
REF: IADEQHL489568

### House Features:

- ✓ Tiling and carpet throughout
- ✓ Exposed aggregate driveway and path
- ✓ 1020mm entry door
- ✓ Monier Atura Low-profile roof tiles or Colorbond roof
- ✓ 2590mm ceiling height to lower level
- ✓ Flyscreens to windows
- ✓ LED downlights
- ✓ Cold water tap to fridge space
- ✓ 20mm stone benchtops to kitchen, ensuite and bathrooms
- ✓ Westinghouse stainless steel dishwasher
- ✓ Externally ducted rangehood
- ✓ Soft-close drawers to kitchen, ensuite and bathrooms
- ✓ Shower niche to ensuite & bathroom

### Estate Features:

- ✓ Greenbank State School
- ✓ Greenbank Shopping Centre
- ✓ Springfield Central Station
- ✓ Everleigh Park



### ENQUIRE NOW:

Brendan Wekeem • P: 0400 901 485 • E: [brisbane.display@adenbrook.com.au](mailto:brisbane.display@adenbrook.com.au)

Images depicted on this site are for illustration purposes only. Facades and other images of homes and land estates may include optional upgrades, additional fixtures, finishes and home or estate features that are not included in the base price of the home or land package such as landscaping, feature tiling, decking, furnishing, feature lighting, pools, etc. Land estate pricing and plans are subject to developer guidelines and may vary at any time.