



House Plan:

LOT #482

Six Mile Creek

Address: Sunnygold Street, Collingwood Park (Qld),
4301



441 m²

The Sorrento

Package Price From

3

2

2

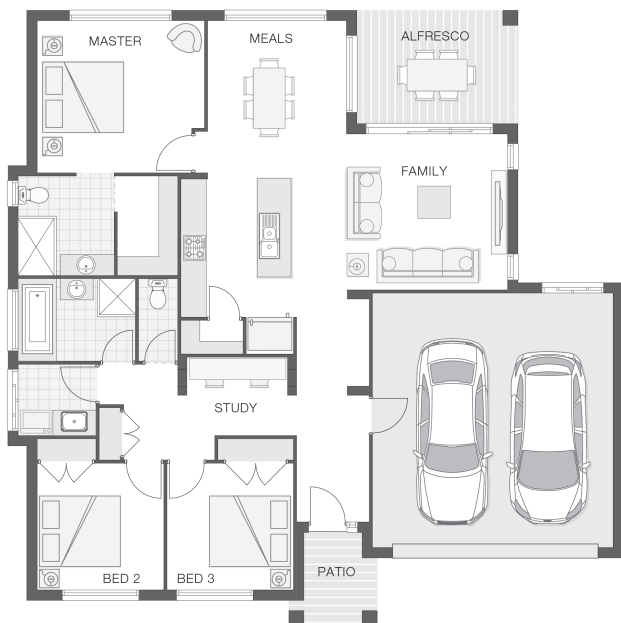
19 sq

\$404,034*

About package:

The Sorrento home design is ideal for easy family living on a traditional block. The clever design boasts a spacious kitchen, open plan meals and family room that flow effortlessly into the alfresco dining area. The master retreat with ensuite and walk-in-robe is tucked away from the rest of the home providing great privacy and separation. The study nook makes homework easy while the additional bedrooms offer comfort and convenient family living.

\$25,000 CASH BONUS AVAILABLE NOW! There has never been a better time to buy a new home than now! The Federal Government has announced a fabulous incentive scheme for new home buyers, with a \$25,000 cash bonus for new home builds. This scheme is available now and will only be available for a limited time, so contact us now to take advantage of this great opportunity. (Eligibility conditions apply)



ENQUIRE NOW:

Brendan Wekeem • P: 0400 901 485 • E: brisbane.display@adenbrook.com.au

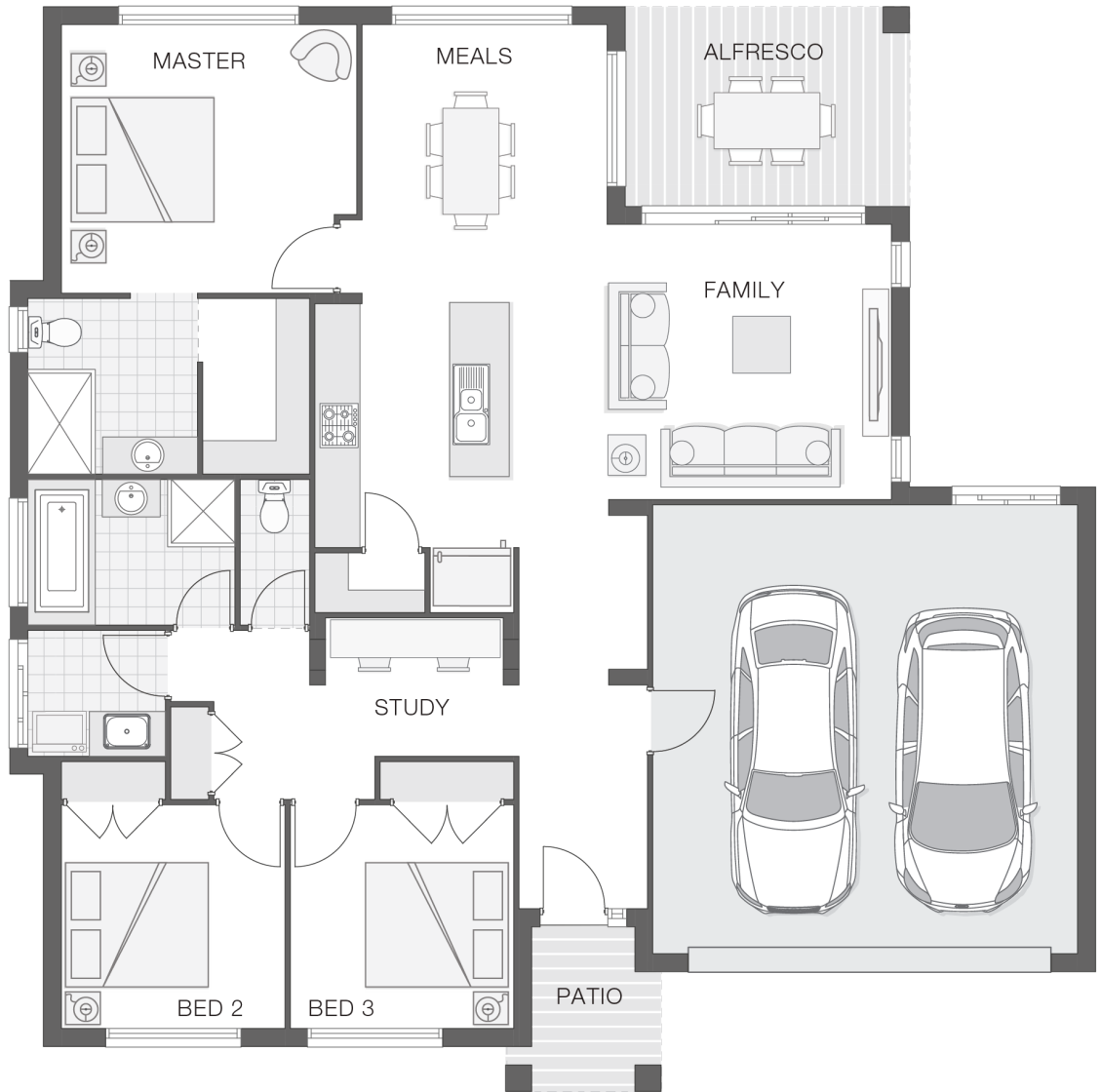
Images depicted on this site are for illustration purposes only. Facades and other images of homes and land estates may include optional upgrades, additional fixtures, finishes and home or estate features that are not included in the base price of the home or land package such as landscaping, feature tiling, decking, furnishing, feature lighting, pools, etc. Land estate pricing and plans are subject to developer guidelines and may vary at any time.

House Features:

- ✓ Tiling and carpet throughout
- ✓ Exposed aggregate driveway and path
- ✓ 1020mm entry door
- ✓ Monier Atura Low-profile roof tiles or Colorbond roof
- ✓ 2590mm ceiling height to lower level
- ✓ Flyscreens to windows
- ✓ LED downlights
- ✓ Cold water tap to fridge space
- ✓ 20mm stone benchtops to kitchen, ensuite and bathrooms
- ✓ Westinghouse stainless steel dishwasher
- ✓ Externally ducted rangehood
- ✓ Soft-close drawers to kitchen, ensuite and bathrooms
- ✓ Shower niche to ensuite & bathroom

Estate Features:

- ✓ WoodLinks State School
- ✓ Town Square Redbank Plains Shopping Centre
- ✓ Bundamba Railway Station



ENQUIRE NOW:

Brendan Wekeem • P: 0400 901 485 • E: brisbane.display@adenbrook.com.au

Images depicted on this site are for illustration purposes only. Facades and other images of homes and land estates may include optional upgrades, additional fixtures, finishes and home or estate features that are not included in the base price of the home or land package such as landscaping, feature tiling, decking, furnishing, feature lighting, pools, etc. Land estate pricing and plans are subject to developer guidelines and may vary at any time.