

The Capestone

4 2 2 26 sq

Facade name: Chadstone

House Plan:

LOT #55

Sawtell Commons

Address: SAWTELL COMMONS, Bonville, 2450



540 m²

House and land package price:

From **\$693,390***

About package:

Government stimulus package of \$25,000 CASH BONUS AVAILABLE NOW!

The Capestone home design is the perfect balance between entertaining and relaxation. The lower level offers multiple entertainment zones including an alfresco and indoor dining area, and a separate media room. The upper level features the master retreat with ensuite and walk-in-robe creating a private sanctuary away from the main living area of the home. Also on the upper floor are the other bedrooms and children's retreat, ensuring there is room for the entire family.

What's included in your beautifully finished, high quality new home

- All Council Fees and Approvals with M Class Soil
- Full sarking wrap to treated timber frames and roof
- Insulation to walls and ceiling, flyscreens
- Carpet / tiles or vinyl flooring
- Recessed wet areas
- Westinghouse appliances
- Alfresco with recessed stacking sliding doors
- Drop-in laundry tub with cabinet and clothesline
- Full electrical layout with downlights and feature lighting and TV aerial
- Water tank, mailbox and concrete driveway

ULTIMATE UPGRADE BUNDLE FOR ONLY \$4900

EXTERNAL / INTERNAL

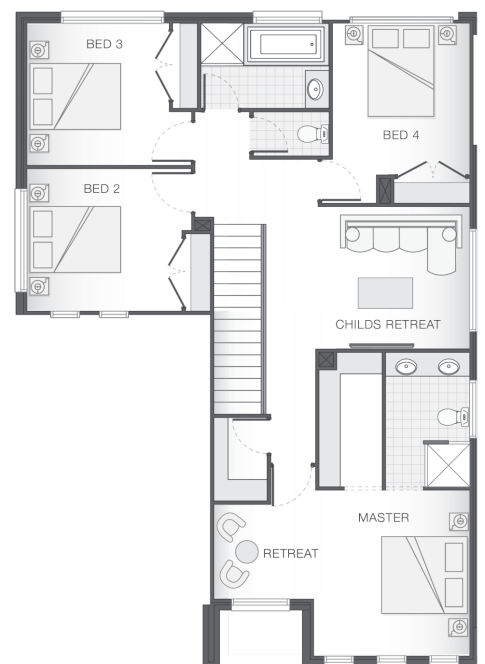
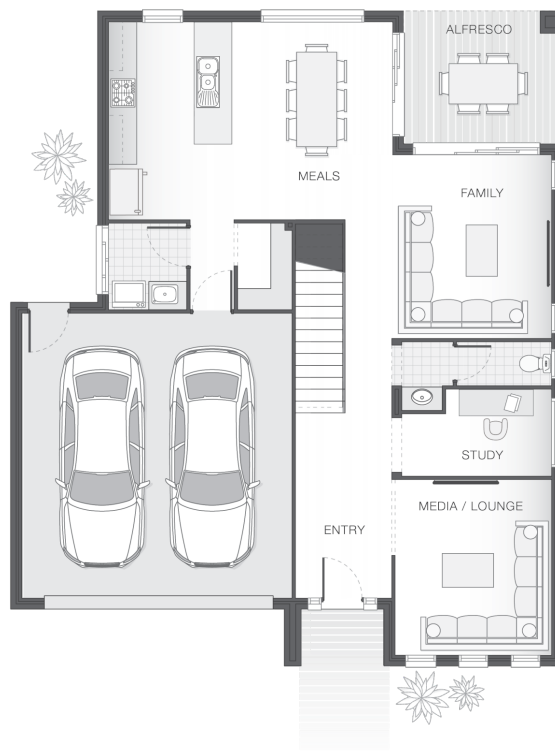
ENQUIRE NOW:

Niki Whelan • P: 0412 797 925 • E: coffs.display@adenbrook.com.au

Plans and designs depicted may change with facade selection. All drawings and photographs are for illustrative purposes only. This work is exclusively owned by AB Aust. IP Pty Ltd (ACN 163 575 077) and cannot be reproduced or copied wholly or in part, in any form without permission of AB Aust. IP Pty Ltd. Any prices in this document include GST, are subject to change without notice, relate only to the base house price and standard inclusions. Site costs will vary depending on site conditions, local Council requirements, estate guidelines and any other statutory requirements applicable. Adenbrook Homes does not have a hold on the block, this package is subject to land availability and you securing the land through the land agent directly. For more information please speak to one of our friendly New Home Consultants.

House Features:

- ✓ Carpet and Tile or Vinyl floors; modern architraves 67mm x 18mm
- ✓ Overhead cupboards to kitchen, 4 shelves to Pantry and Linen
- ✓ Wideline aluminium windows, stacker and sliding doors, and flyscreens
- ✓ Three (3) coat Haymes low toxic internal paint system
- ✓ Double lock-up garage with remotes, mailbox, and clothesline
- ✓ LED downlights throughout and NBN provision
- ✓ Guaranteed build time, fixed price and no hidden costs
- ✓ 3 included facade options and complimentary window changes
- ✓ Termite resistant "blue pine" framing and trusses and physical termite barriers
- ✓ Brick exterior, concrete tile roof, 45sqm grey concrete driveway
- ✓ Extended polished edge mirrors full wall width
- ✓ Concrete Alfresco and Portico areas
- ✓ 20mm stone benchtops to kitchen
- ✓ Builders Grant \$15K
- ✓ Ultimate upgrade bundle
- ✓ Site works allowance



ENQUIRE NOW:

Niki Whelan • P: 0412 797 925 • E: coffs.display@adenbrook.com.au

Plans and designs depicted may change with facade selection. All drawings and photographs are for illustrative purposes only. This work is exclusively owned by AB Aust. IP Pty Ltd (ACN 163 575 077) and cannot be reproduced or copied wholly or in part, in any form without permission of AB Aust. IP Pty Ltd. Any prices in this document include GST, are subject to change without notice, relate only to the base house price and standard inclusions. Site costs will vary depending on site conditions, local Council requirements, estate guidelines and any other statutory requirements applicable. Adenbrook Homes does not have a hold on the block, this package is subject to land availability and you securing the land through the land agent directly. For more information please speak to one of our friendly New Home Consultants.