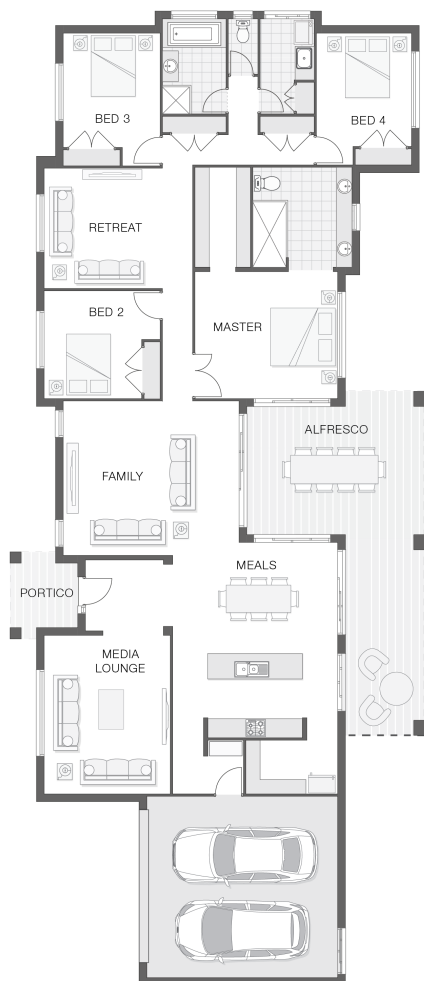


The Beacon - A

4 2 2 34 sq

Facade name: Byron

House Plan:



LOT #3

Mountain View Estate

Address: 315 Macquires Road, Maraylya, 2765



9933 m²

House and land package price:

From **\$1,901,937***

About package:

This Adenbrook House & Land package is located in the highly sought-after suburb of Maraylya. Located in Sydney's Semi-Rural North-West, this location will not disappoint, with room for "The House" and "The Shed" and "The Pool", you will still have room to take the horse for a gallop.

Set on a 9933m² block of land, we have coupled it with our Beacon A home design. With 4 bedrooms, retreat, large home theatre, coupled with great open-planned living space, and lots of storage space, you don't want to miss out on this one! The open plan living with integrated alfresco encourages a relaxed, casual lifestyle for living and entertaining. Land is registered and ready for the build.

This House and Land Package includes:-

- * Standard Site Costs and Standard Basix Requirements
 - * Water Tank and Envirocycle
 - * Byron Facade
 - * Builders range tiles & carpet throughout home
 - * Tiling to the Alfresco and Portico
 - * Coloured Concrete Driveway - 80m²
 - * Daiken Reverse Cycle Ducted Air Con.
 - * Caroma Bathroom Accessories
 - * PLUS our fantastic Ultimate Upgrade Bundle!
 - Our ULTIMATE BUNDLE PACKAGE has fantastic inclusions of
 - * 1020mm Entry Door
 - * 20mm Stone benchtop to the kitchen, bathroom and Ensuite.
 - * Westinghouse Dishwasher and Microwave, just to name a few
- Don't miss out, call your builder today on 0418 656 366 to find out how to make this dream a reality

ENQUIRE NOW:

Paul James • P: 0418656366 • E: hawkesbury.bluemountains@adenbrook.com.au

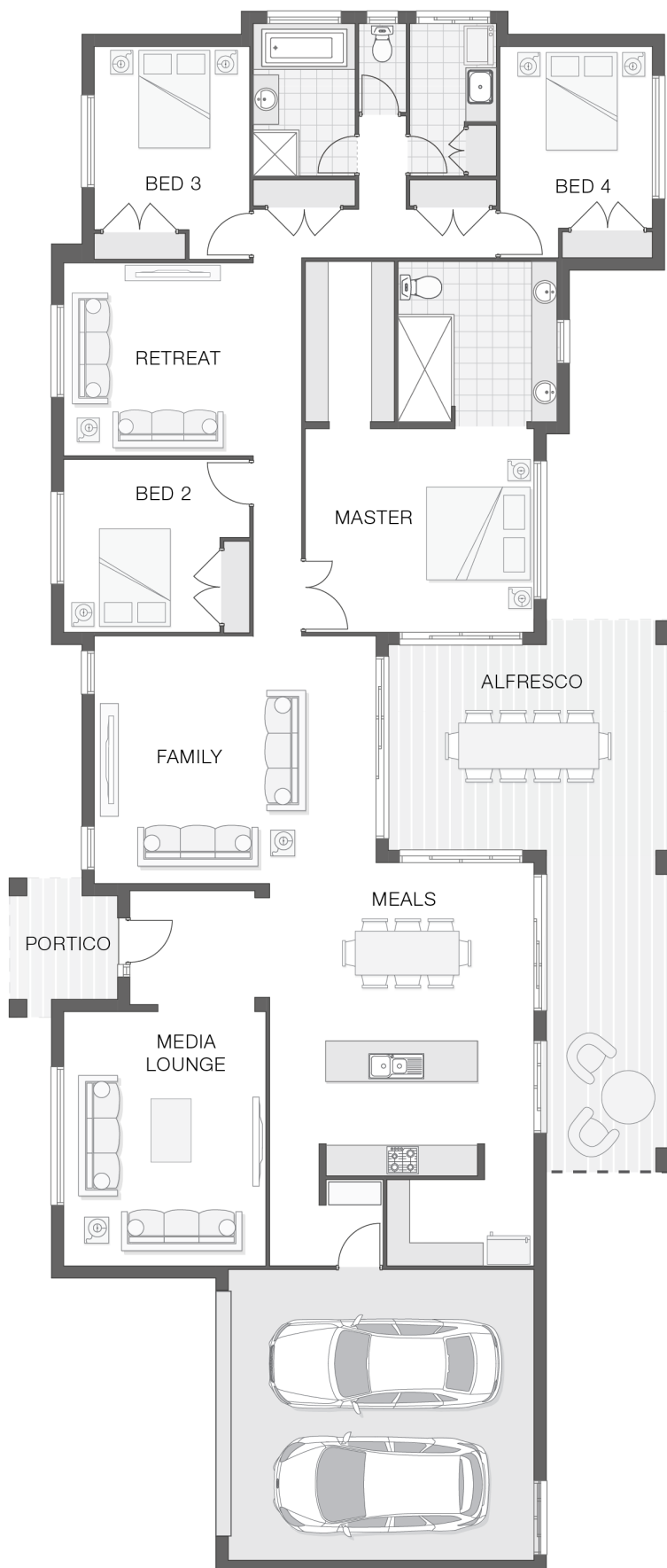
Images depicted on this site are for illustration purposes only. Facades and other images of homes and land estates may include optional upgrades, additional fixtures, finishes and home or estate features that are not included in the base price of the home or land package such as landscaping, feature tiling, decking, furnishing, feature lighting, pools, etc. Land estate pricing and plans are subject to developer guidelines and may vary at any time.

House Features:

- ✓ Solar Power
- ✓ Ducted Air Conditioning
- ✓ Stone Benchtops to Kitchen and Bathrooms*
- ✓ 120,000L Water Tank
- ✓ Shower Niches to Ensuite & Bathroom
- ✓ Covered Concrete & Tiled Alfresco area
- ✓ Ultimate Bundle
- ✓ Double GPO's Throughout
- ✓ Stainless Steel Appliances
- ✓ Basix
- ✓ 3 Phase Underground Power
- ✓ Envirocycle System
- ✓ Soft Close Drawers & Doors
- ✓ Concrete Driveway - 80m² Allowance
- ✓ 1020mm wide Feature Front Entry Door
- ✓ Colourbond Roof
- ✓ Floor Coverings
- ✓ 2590mm High Ceilings
- ✓ All connections & services
- ✓ Flyscreens
- ✓ Termite Barrier Protection

Estate Features:

- ✓ Level, grassed, 100% usable
- ✓ Quality location with multi-million dollar estates close by
- ✓ Build your dream Adenbrook home with the benefit of Local Builder with Big Brand Pricing
- ✓ Impressive 5 block subdivision
- ✓ Close to shops, schools, transport
- ✓ Within minutes drive to the new Box Hill Commercial and Retail Precincts (soon to be completed)
- ✓ Within 10 minutes to Hills Grammar, Marian college, Dural Shops, Rouse Hill Shops + railway station



ENQUIRE NOW:

Paul James • P: 0418656366 • E: hawkesbury.bluemountains@adenbrook.com.au

adenbrook
homes

Images depicted on this site are for illustration purposes only. Facades and other images of homes and land estates may include optional upgrades, additional fixtures, finishes and home or estate features that are not included in the base price of the home or land package such as landscaping, feature tiling, decking, furnishing, feature lighting, pools, etc. Land estate pricing and plans are subject to developer guidelines and may vary at any time.