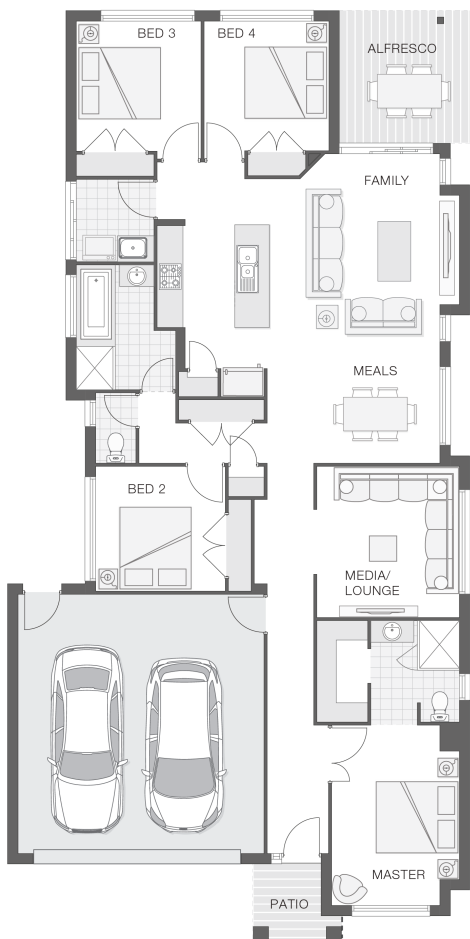




House Plan:



LOT #9

Prosperity

Address: Botanical Circuit, Pallara, 4110



400 m²

The Saxon

Package Price From

4

2

2

21 sq

\$546,374*

About package:

The Saxon home design achieves the perfect balance between compact living and functionality. The clever design incorporates a central hub for entertaining both indoors and out with the tidy alfresco area adjoining the kitchen, family room and meals zones. A touch of luxury is added through the separate media or lounge room while all bedrooms are well-appointed to allow separation and privacy. The master retreat includes an ensuite and walk-in-robe to round out a convenient and punchy design.

\$25,000 CASH BONUS AVAILABLE NOW! There has never been a better time to buy a new home than now! The Federal Government has announced a fabulous incentive scheme for new home buyers, with a \$25,000 cash bonus for new home builds. This scheme is available now and will only be available for a limited time, so contact us now to take advantage of this great opportunity. (Eligibility conditions apply)

ENQUIRE NOW:

Brendan Wekeem • P: 0400 901 485 • E: brisbane.display@adenbrook.com.au

Images depicted on this site are for illustration purposes only. Facades and other images of homes and land estates may include optional upgrades, additional fixtures, finishes and home or estate features that are not included in the base price of the home or land package such as landscaping, feature tiling, decking, furnishing, feature lighting, pools, etc. Land estate pricing and plans are subject to developer guidelines and may vary at any time.

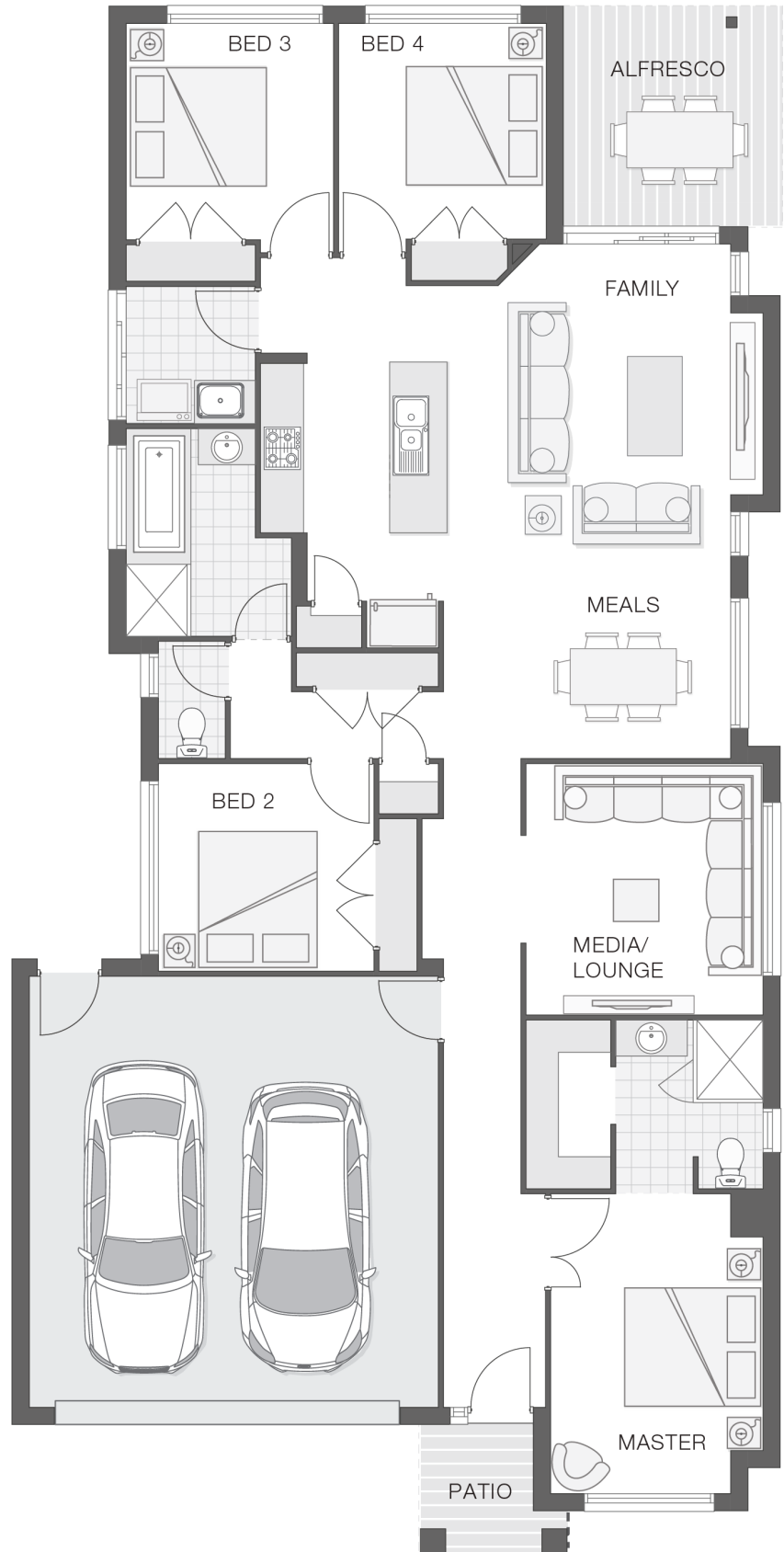
Powered by iBuildNew

adenbrook
homes

REF: IADEQHL490830

House Features:

- ✓ Tiling and carpet throughout
- ✓ TV antenna and clothesline
- ✓ Exposed aggregate driveway and path
- ✓ Tiling and integral slab to alfresco
- ✓ 1020mm entry door
- ✓ Monier Atura Low-profile roof tiles or Colorbond roof
- ✓ 2590mm ceiling height to lower level
- ✓ Flyscreens to windows
- ✓ LED downlights
- ✓ Cold water tap to fridge space
- ✓ 20mm stone benchtops to kitchen, ensuite and bathrooms
- ✓ Westinghouse stainless steel dishwasher
- ✓ Externally ducted rangehood
- ✓ Soft-close drawers to kitchen, ensuite and bathrooms
- ✓ Shower niche to ensuite & bathroom
- ✓ Brick and rendered letterbox



ENQUIRE NOW:

Brendan Wekeem • P: 0400 901 485 • E: brisbane.display@adenbrook.com.au

Images depicted on this site are for illustration purposes only. Facades and other images of homes and land estates may include optional upgrades, additional fixtures, finishes and home or estate features that are not included in the base price of the home or land package such as landscaping, feature tiling, decking, furnishing, feature lighting, pools, etc. Land estate pricing and plans are subject to developer guidelines and may vary at any time.