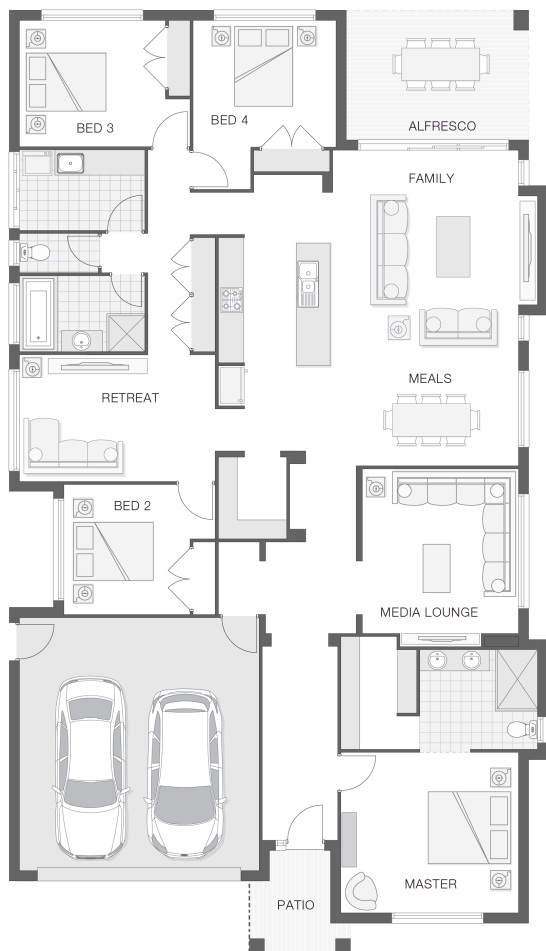


The Orion - B

4 2 2 28 sq

Facade name: Kalia

House Plan:



LOT #TBA

Kembla Grange

Address: Proposed Road, Kembla Grange, 2526



491.8 m²

House and land package price:

From **\$697,600***

About package:

This Adenbrook Home & Land package is located in the highly sought-after estate of Kembla Grange.

Set on a 491.8m² block of land, we have coupled it with our Orion B home design.

This House and Land Package includes:-

- * Standard Site Costs and Standard Basix Requirements
- * Builders range tiles & carpet throughout home
- * Tiling to the Alfresco and Portico
- * Coloured Concrete Driveway
- * Daiken Reverse Cycle Ducted Air Con.
- * Caroma Bathroom Accessories
- * PLUS our fantastic Ultimate Upgrade Bundle!
- Our ULTIMATE BUNDLE PACKAGE has fantastic inclusions of
- * 2590mm ceiling heights throughout (ground floor only to double storey homes)
- * shower Niche to Bathroom and Ensuite
- * Monier Atura Low Profile Roof Tiles
- * 1020mm Entry Door
- * Flyscreens to all openable windows
- * 20mm Stone benchtop to the kitchen, bathroom and Ensuite.
- * Westinghouse Dishwasher and Microwave, just to name a few

Don't miss out, call Jillian today to find out how to make this dream a reality

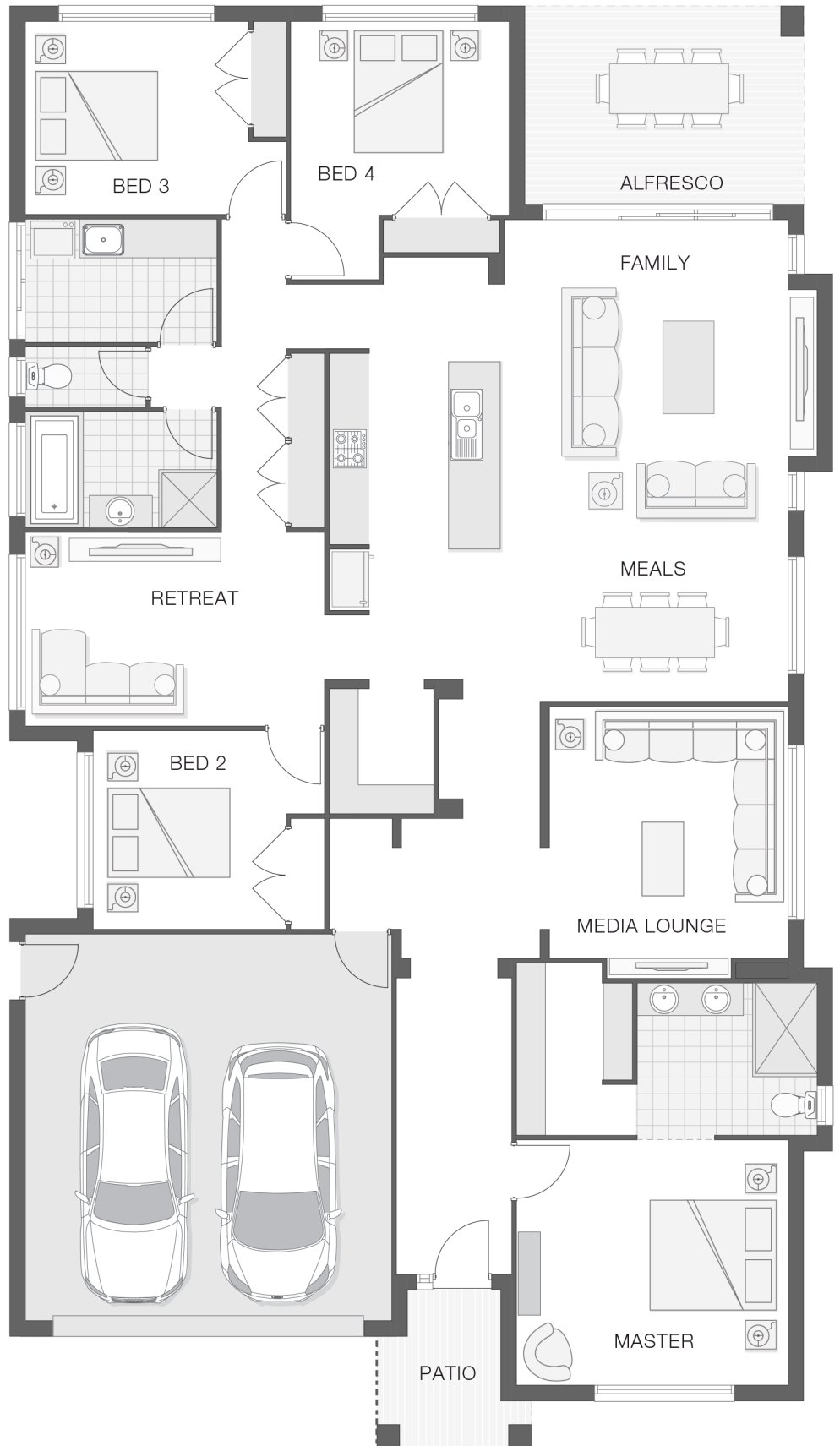
ENQUIRE NOW:

Jillian Stokes • P: 0415 301 615 • E: greaterwollongong@adenbrook.com.au

Plans and designs depicted may change with facade selection. All drawings and photographs are for illustrative purposes only. This work is exclusively owned by AB Aust. IP Pty Ltd (ACN 163 575 077) and cannot be reproduced or copied wholly or in part, in any form without permission of AB Aust. IP Pty Ltd. Any prices in this document include GST, are subject to change without notice, relate only to the base house price and standard inclusions. Site costs will vary depending on site conditions, local Council requirements, estate guidelines and any other statutory requirements applicable. Adenbrook Homes does not have a hold on the block, this package is subject to land availability and you securing the land through the land agent directly. For more information please speak to one of our friendly New Home Consultants.

House Features:

- ✓ Render to the home
- ✓ Standard Site Costs and Standard Basix Requirements
- ✓ Builders range tiles & carpet throughout home
- ✓ Tiling to the Alfresco and Portico
- ✓ Coloured Concrete Driveway
- ✓ Daiken Reverse Cycle Ducted Air Conditioning
- ✓ 1020mm Entry Door
- ✓ 20mm Stone benchtop to the kitchen, bathroom and Ensuite.
- ✓ Westinghouse Cooktop, Oven and Dishwasher
- ✓ Shower Niches
- ✓ 2x Gas Points
- ✓ Monier Atura low-profile roof tiles
- ✓ R2 Walls and R4 Ceiling Insulation
- ✓ Flyscreens To all openable windows
- ✓ Clipsal Iconic Ultramodern range Switch Gear
- ✓ Soft-close drawers and doors to Kitchen and Bathrooms
- ✓ Much More...
- ✓ 2590mm Ceiling Upgrade



ENQUIRE NOW:

Jillian Stokes • P: 0415 301 615 • E: greaterwollongong@adenbrook.com.au

Plans and designs depicted may change with facade selection. All drawings and photographs are for illustrative purposes only. This work is exclusively owned by AB Aust. IP Pty Ltd (ACN 163 575 077) and cannot be reproduced or copied wholly or in part, in any form without permission of AB Aust. IP Pty Ltd. Any prices in this document include GST, are subject to change without notice, relate only to the base house price and standard inclusions. Site costs will vary depending on site conditions, local Council requirements, estate guidelines and any other statutory requirements applicable. Adenbrook Homes does not have a hold on the block, this package is subject to land availability and you securing the land through the land agent directly. For more information please speak to one of our friendly New Home Consultants.