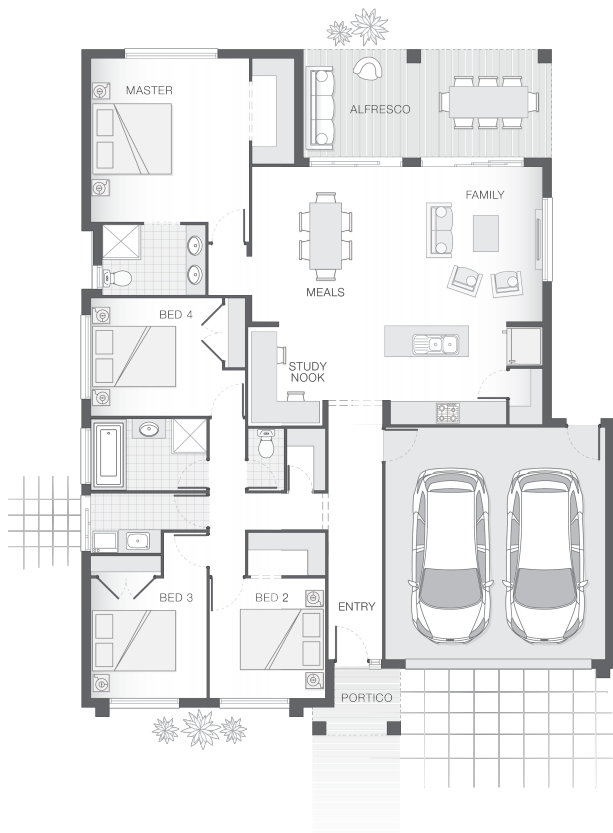




House Plan:



LOT #162

Foreshore, Coomera

Address: Kerang Street, Coomera, 4209



416 m²

The Chelsea - Gold Coast

Package Price From

4

2

2

214 m²

\$578,323*

About package:

Brought to you by award winning builder Adenbrook Homes, this home & land package has been created to represent true value.

Location wise it offers everything for growing families with close proximity to Coomera East Village, Westfield Coomera, Foxwell State Secondary College, Coomera Rivers State School & Coomera Train Station all whilst being part of a thriving masterplanned community consisting of large open parklands and dedicated walking & bike trails.

Set on an ample 416 sqm. block of land coupled with our modern, open plan Chelsea design this package is sure to impress.

For a limited time this package comes with our Ultimate Bundle Promo full of features as well as:

- Exposed Aggregate Concrete Driveway
- Internal Floor Coverings (tiles & carpet)
- Stone Benchtops to Kitchen & Bathrooms
- Stainless Steel Westinghouse Appliances
- LED Downlights
- Sponge Finish Render
- Undercover Alfresco Entertaining Area
- Soft Close Doors & Drawers to Kitchen and Bathrooms
- Dishwasher & Built-In Microwave
- Plus much, much more!

ENQUIRE NOW:

Con Sgouros • P: 0404 308 208 • E: goldcoast@adenbrook.com.au

Plans and designs depicted may change with facade selection. All drawings and photographs are for illustrative purposes only. This work is exclusively owned by AB Aust. IP Pty Ltd (ACN 163 575 077) and cannot be reproduced or copied wholly or in part, in any form without permission of AB Aust. IP Pty Ltd. Any prices in this document include GST, are subject to change without notice, relate only to the base house price and standard inclusions. Site costs will vary depending on site conditions, local Council requirements, estate guidelines and any other statutory requirements applicable. Adenbrook Homes does not have a hold on the block, this package is subject to land availability and you securing the land through the land agent directly. For more information please speak to one of our friendly New Home Consultants.