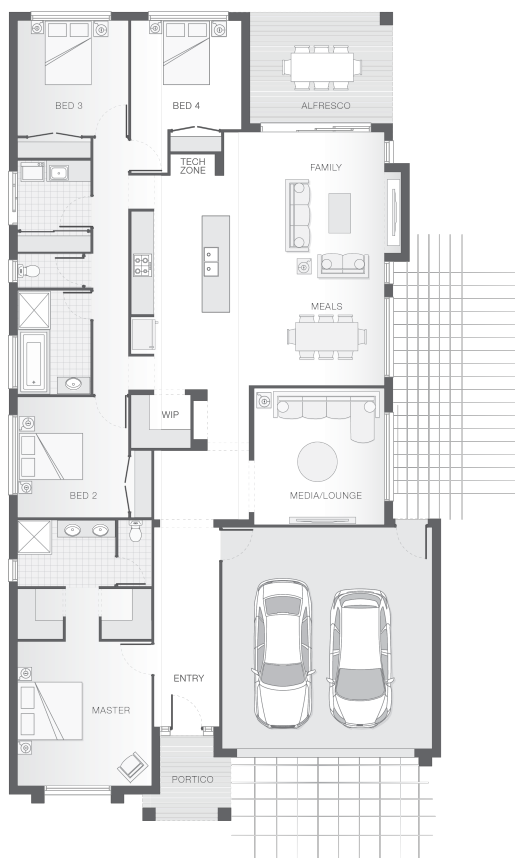




House Plan:



LOT #309

Foreshore, Coomera

Address: Macquarie Street, Coomera, 4209



455 m²

The Fraser - B - Gold Coast

Package Price From

4

2

2

228 m²

\$625,913*

About package:

Brought to you by award winning builders Adenbrook Homes, this home & land package is located in the ever popular Stockland, Foreshore Estate at Coomera.

Foreshore Coomera, is a place to relax and enjoy the best life has to offer with everything you need at your doorstep. With proposed parks, 51 hectares of conservation area and the Coomera River on your doorstep as well as amenity close by such as Coomera Westfield, Coomera East shopping village and the train station where else would you want to live.

Set on a luxurious 455 sqm block, coupled with our Fraser B design this home consists of 4 bedrooms, 2 bathrooms (ensuite to main) and double garage with internal access.

This package comes with our value packed Ultimate Bundle Promo as well as a vast array of upgrades such as:

- Exposed Aggregate Concrete Driveway
- Stone Benchtops to Kitchen & Bathrooms
- Stainless Steel Westinghouse Appliances
- LED Downlights
- Internal Floor Coverings (tiles & carpet)
- Undercover Alfresco Entertaining Area
- Soft Close Doors & Drawers to Kitchen and Bathrooms
- Upgraded 1020 entry door
- Dishwasher & Built-In Microwave

ENQUIRE NOW:

Con Sgouros • P: 0404 308 208 • E: goldcoast@adenbrook.com.au

Plans and designs depicted may change with facade selection. All drawings and photographs are for illustrative purposes only. This work is exclusively owned by AB Aust. IP Pty Ltd (ACN 163 575 077) and cannot be reproduced or copied wholly or in part, in any form without permission of AB Aust. IP Pty Ltd. Any prices in this document include GST, are subject to change without notice, relate only to the base house price and standard inclusions. Site costs will vary depending on site conditions, local Council requirements, estate guidelines and any other statutory requirements applicable. Adenbrook Homes does not have a hold on the block, this package is subject to land availability and you securing the land through the land agent directly. For more information please speak to one of our friendly New Home Consultants.