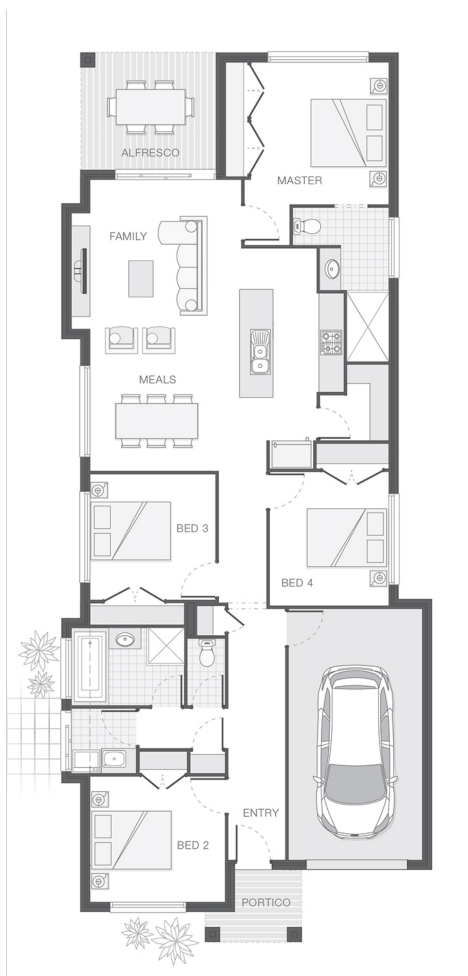




House Plan:



LOT #160

Foreshore, Coomera

Address: Dales Way, Coomera, 4209



280 m²

The Macleay - Gold Coast

Package Price From

4 2 1 164 m²

\$487,026*

About package:

Brought to you by award winning builder Adenbrook Homes, this home & land package has been created to take the stress out of searching for your new home.

Location wise it offers everything for growing families with close proximity to Coomera East Village, Westfield Coomera, Foxwell State Secondary College, Coomera Rivers State School & Coomera Train Station all whilst being part of a thriving masterplanned community consisting of large open parklands and dedicated walking & bike trails.

Set on a low maintenance 280 sqm. block of land coupled with our modern, open plan Macleay design this package is sure to impress.

For a limited time this package comes with our Ultimate Bundle Promo full of features as well as:

- Exposed Aggregate Concrete Driveway
- Internal Floor Coverings (tiles & carpet)
- Stone Benchtops to Kitchen & Bathrooms
- Stainless Steel Westinghouse Appliances
- LED Downlights
- Sponge Finish Render
- Undercover Alfresco Entertaining Area
- Soft Close Doors & Drawers to Kitchen and Bathrooms
- Dishwasher & Built-In Microwave
- Plus much, much more!

ENQUIRE NOW:

Con Sgouros • P: 0404 308 208 • E: goldcoast@adenbrook.com.au

Images depicted on this site are for illustration purposes only. Facades and other images of homes and land estates may include optional upgrades, additional fixtures, finishes and home or estate features that are not included in the base price of the home or land package such as landscaping, feature tiling, decking, furnishing, feature lighting, pools, etc. Land estate pricing and plans are subject to developer guidelines and may vary at any time.