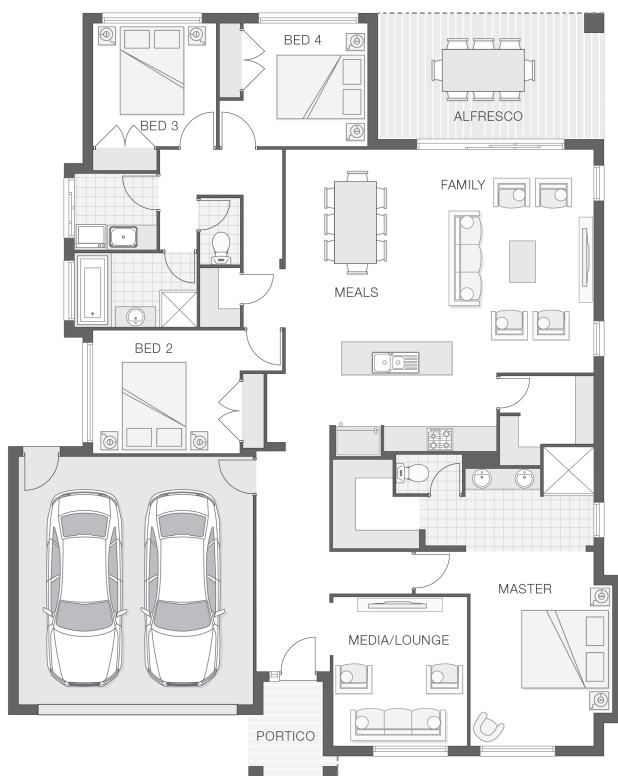


## The Baywood - C

4 2 2 26 sq

Facade name: Haven

### House Plan:



### LOT #342

Innes Lake Estate

Address: Koel Crescent, Port Macquarie, 2444



796 m<sup>2</sup>

House and land package price:

From **\$634,700\***

### About package:

Adenbrook Homes Mid North Coast are a locally owned, award-winning builder, backed by the strength of a big brand. We offer turn-key pricing, designed to give you everything you need to move straight in - without the hidden costs.

The Baywood home design is equally as stylish as it is tasteful. The layout affords privacy and separation while also offering a central heart of the home which is comprised of kitchen, dining and alfresco space ideal for entertainment, enjoyment and relaxation. Perfect when paired with this 796sqm block in a lovely established area of Innes Lake.

#### Ultimate Bundle Upgrade

- 20mm stone benchtops to kitchen
- BAL (Bushfire Attack Level) Allowance
- Quality Timber Look Flooring, Carpet and Tiles
- 900mm Cooker and Dishwasher
- Rainwater Tank Letterbox and Clothesline
- Concrete Alfresco and Portico areas
- Brushed Concrete Driveway
- Flyscreens
- Remote Controlled Garage Door + 2 remotes
- Site works allowance
- 2570mm high ceilings
- Hume Savoy 1200 hinged entry door

### ENQUIRE NOW:

Kristen Curry • P: 0401 091 313 • E: [portmacquarie.display@adenbrook.com.au](mailto:portmacquarie.display@adenbrook.com.au)

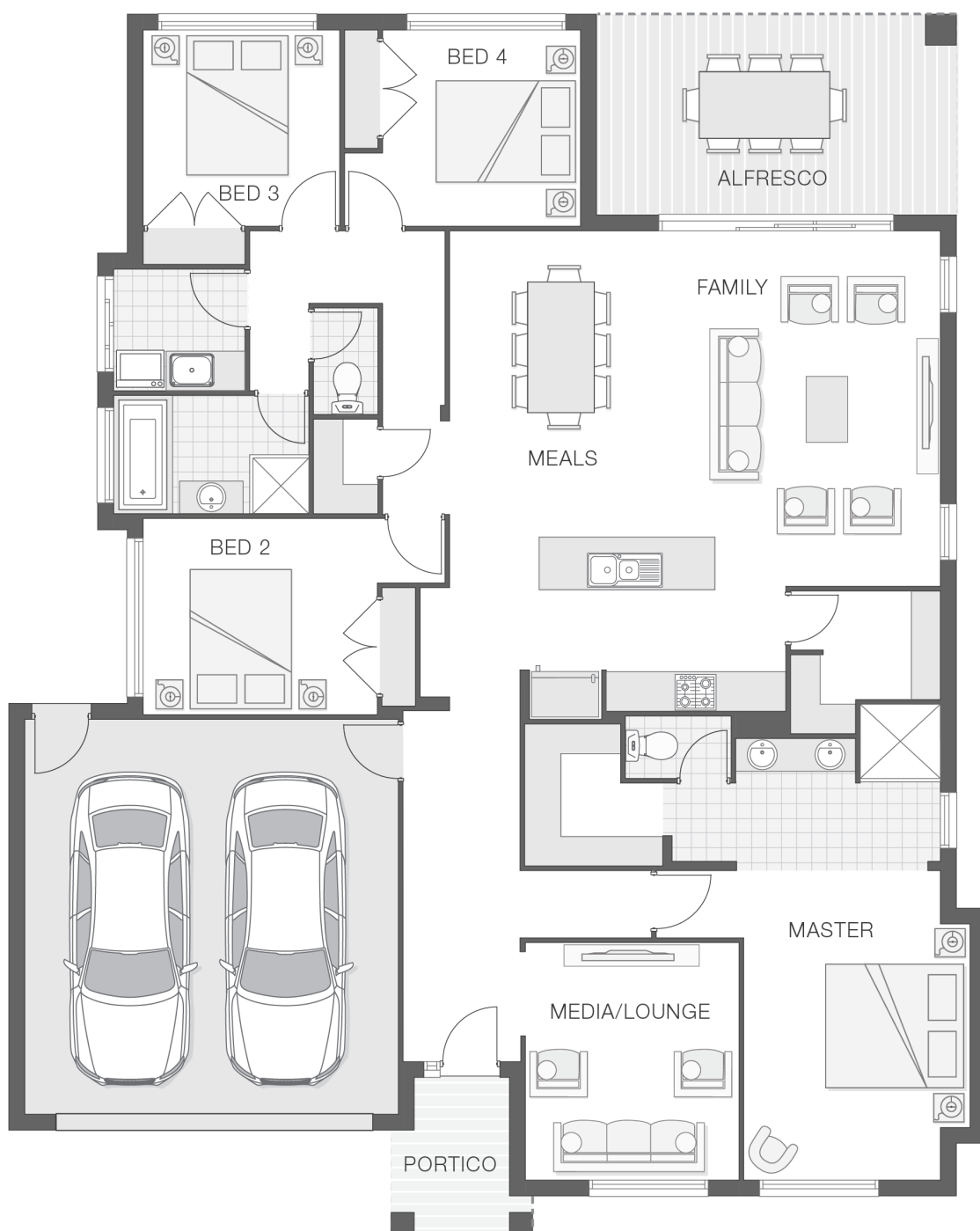
Plans and designs depicted may change with facade selection. All drawings and photographs are for illustrative purposes only. This work is exclusively owned by AB Aust. IP Pty Ltd (ACN 163 575 077) and cannot be reproduced or copied wholly or in part, in any form without permission of AB Aust. IP Pty Ltd. Any prices in this document include GST, are subject to change without notice, relate only to the base house price and standard inclusions. Site costs will vary depending on site conditions, local Council requirements, estate guidelines and any other statutory requirements applicable. Adenbrook Homes does not have a hold on the block, this package is subject to land availability and you securing the land through the land agent directly. For more information please speak to one of our friendly New Home Consultants.

### House Features:

- ✓ 20mm stone benchtops to kitchen
- ✓ Ultimate upgrade bundle
- ✓ BAL (Bushfire Attack Level) Allowance
- ✓ Quality Timber Look Flooring, Carpet and Tiles
- ✓ 900mm Cooker and Dishwasher
- ✓ Letterbox and Clothesline
- ✓ Concrete Alfresco and Portico areas
- ✓ Brushed Concrete Driveway
- ✓ Flyscreens
- ✓ Remote Controlled Garage Door + 2 remotes
- ✓ Site works allowance
- ✓ 2570mm high ceilings
- ✓ 1200mm Hinged Wideline Aluminium Entry Door

### Estate Features:

- ✓ Large block sizes
- ✓ Nearby Port Macquarie Hospital
- ✓ Serene leafy outlook
- ✓ Easy access to Charles Sturt University
- ✓ Close to schools
- ✓ Close to Innes Lake Shopping Village



### ENQUIRE NOW:

Kristen Curry • P: 0401 091 313 • E: [portmacquarie.display@adenbrook.com.au](mailto:portmacquarie.display@adenbrook.com.au)

Plans and designs depicted may change with facade selection. All drawings and photographs are for illustrative purposes only. This work is exclusively owned by AB Aust. IP Pty Ltd (ACN 163 575 077) and cannot be reproduced or copied wholly or in part, in any form without permission of AB Aust. IP Pty Ltd. Any prices in this document include GST, are subject to change without notice, relate only to the base house price and standard inclusions. Site costs will vary depending on site conditions, local Council requirements, estate guidelines and any other statutory requirements applicable. Adenbrook Homes does not have a hold on the block, this package is subject to land availability and you securing the land through the land agent directly. For more information please speak to one of our friendly New Home Consultants.