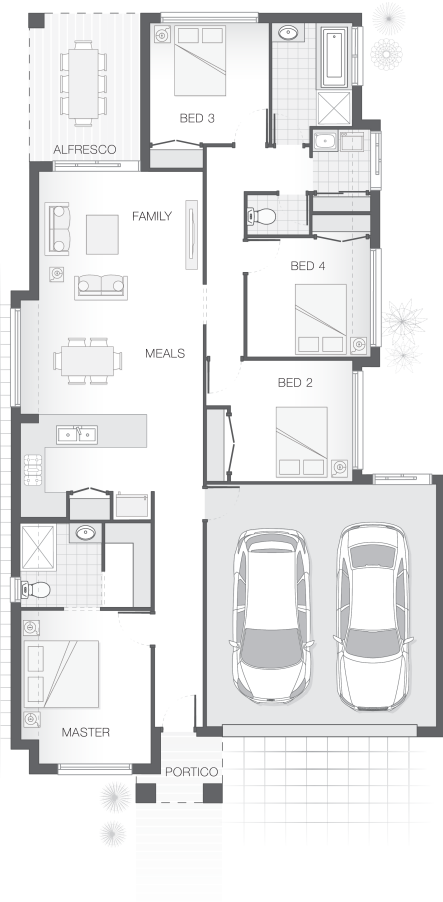




House Plan:



LOT #550

Brookhaven

Address: Brookhaven Blvd, Bahrs Scrub, 4207



375 m²

The Willow - Gold Coast

Package Price From

4 2 2 175 m²

\$432,281*

About package:

Brought to you by award winning builder Adenbrook Homes, this home & land package is perfect starter!!!

Location wise it offers everything for growing families with close proximity to Beenleigh train station, major shopping retailers such as Aldi, Coles, Bunnings Warehouse and Woolwoths as well as easy access to the M1 for connectivity to the Gold Coast and Brisbane. Within a lush natural landscape and featuring community spaces such as viewing platforms, fitness nodes, walking trails and local parks, here, families can truly thrive.

Set on an ideal 375 sqm. block the popular Willow design is sure to impress.

For a limited time this package comes with our Ultimate Bundle Promo full of features as well as:

- Concrete Driveway
- Internal Floor Coverings (tiles & carpet)
- Stone Benchtops to Kitchen & Bathrooms
- Stainless Steel Westinghouse Appliances
- LED Downlights
- Undercover Alfresco Entertaining Area
- Soft Close Doors & Drawers to Kitchen and Bathrooms
- Dishwasher & Built-In Microwave
- Plus much, much more!

ENQUIRE NOW:

Con Sgouros • P: 0404 308 208 • E: goldcoast@adenbrook.com.au

Images depicted on this site are for illustration purposes only. Facades and other images of homes and land estates may include optional upgrades, additional fixtures, finishes and home or estate features that are not included in the base price of the home or land package such as landscaping, feature tiling, decking, furnishing, feature lighting, pools, etc. Land estate pricing and plans are subject to developer guidelines and may vary at any time.